

# Welcome to Maitland High School

New Student Booklet  
Year 7 2021



*Successful Teachers, Successful Students, Successful School*

# New Student Booklet

**Important Information..... 3**

**Welcome to Maitland High School .....4**

**Aboriginal Education .....10**

**Key Staff Members 2021 .....12**

**Keeping in Touch (MHS Website, Skoolbag App & Facebook) ..... 14**

**MHS Rules ..... 16**

**What is High School like at MHS?..... 22**

**School Fees..... 26**

**Stationery & Equipment ..... 27**

**Year 7 Lockers ..... 29**

**School Uniform..... 30**

**MHS Procedures (Arriving Late or Leaving Early)..... 34**

**MHS Procedures (Whole Day Absence & Updating Details)..... 35**

**BYOD Information..... 36**

**Timetables & Bell Times ..... 37**

**Bus Transport & Opal Cards Applications ..... 38**

**School Map..... 39**

**Immunisation Information..... 40**



## Important Information

**ADDRESS:** 20 - 32 High Street, East Maitland NSW 2323

**POSTAL ADDRESS:** PO Box 498, East Maitland NSW 2323

**TELEPHONE:** (02) 4933 7933

**FACSIMILE:** (02) 4933 7673

**EMAIL:** [maitland-h.school@det.nsw.edu.au](mailto:maitland-h.school@det.nsw.edu.au)

**OFFICE HOURS:** 8.30am - 3.30pm Monday to Friday (school term only)

**WEBSITE:** [www.maitlandhigh.com.au](http://www.maitlandhigh.com.au)



[www.facebook.com/maitlandhigh](http://www.facebook.com/maitlandhigh)



Education - Truly vibrant schools!  
Public Schools





**Meet our 2021 Captains:**  
Caleb Walz and Molly Young





# Welcome to Maitland High School



**There really is 'something different' about our school\_ and we're proud of it!**

**It's called community and high care for our students.  
It's called change responsive, with a creative approach to building the strengths, capacities and wellbeing of our students.**

**We work with our parents and carers and we ARE proudly inclusive!  
This is YOUR school!**

**Welcome!**

# Welcome to Maitland High School

## Why we are seen as 'the school on the up' in the community!

Maitland High School is the second-oldest state high school in Australia. It has a very rich history and a strong position in the community which provides a stable platform for the school to look to the future. Our school motto, "En Avant" (Go Forward) encapsulates the school's aim to develop a sense of future: of capacity, achievement and success, in all students. Our 2015-17 School Plan captures the focus of the school: 'Successful Teachers, Successful Students, Successful School'.

## The school is increasingly the talk of the community as the school 'on the move' in the area! Why? Read on...

## Can a public high school, which is open to all students, really have settled classrooms, high expectations of student behaviour and quality learning? Proudly, YES!

Maitland High School is a very special place where real vibrancy and a sense of community exist and are promoted through inclusive curricular and co-curricular activities. We are very proud of our continuing improvement and the recognition of our school as **a place of settled classrooms, engaged learners and positive student relationships**. This was recognised recently (Nov 2016) when one of our head teachers was at an HSC Marking Centre. On hearing that she was from Maitland High School, other HSC markers from the Hunter area exclaimed; "Oh, that's the school we hear so much about! We hear great things are happening there and that it is really on the move! You must love working there!" The head teacher delightedly told this to colleagues in a Staff Meeting at the end of the year - her pride in our school's recognition, and that of her colleagues on hearing this, was wonderful to see!

This pride and positivity is also reflected in our **exceptionally high teacher morale and commitment to the school**: in the end of 2016 Staff Survey, 99% of all teaching staff reported that they enjoyed working at MHS. This translates into **enthusiastic and committed teachers in high-performing and well-supported classrooms**. Staff morale is a telling indicator in a school: **MHS is a healthy, happy community and has a wonderful staff who care greatly about our students and their successes**. Come and find out first-hand about our school!

Maitland High School is a 'lighthouse' school, demonstrating that comprehensive public schools are also sites of high-care, high-quality learning and community building: all our parents can have confidence in their local public high school to deliver quality education in a safe and settled environment. Yes, we are an inclusive and proudly comprehensive high school serving a diverse community: we invite all parents considering our school for their child to come and meet with the principal for an individual guided tour and discussion to see and experience first-hand, our: high school tone; high standards and expectations, and our settled classrooms.





# Welcome to Maitland High School



# Welcome to Maitland High School



Principal, Paula Graham,

has set a transparent academic improvement agenda of high expectations and committed focus on individual learners to ensure all students succeed.

Is the school academically focused?

Does it care and cater for individual learners?  
YES!

## How?

1. Our Teachers use **high-quality, explicit teaching** i.e. where the steps to successful learning are modelled for the learner.
2. **Learning activities focused on higher-order and conceptual thinking skills development in every Year, 7-12** and in every classroom across the school. These critical conceptual thinking skills are necessary for high Band 5 & 6 performance at the HSC and they need to be taught from the very first years of high school.
3. **We have a strong focus on literacy skills development in every classroom.** The ability to read well; understand complex or abstract ideas; express understandings and ideas fluently in oral and written language, with a good command of vocabulary and grammar, are the basics for success in all subjects - and, most importantly, essential for success in 21st Century careers.
4. **High expectations for student learning and positive behaviour at all times:** no tolerance of disruptive or poor behaviour. The school's high expectations for learning embrace all students. This involves our students:
  - **coming to school on time**
  - **being prepared for learning with all equipment**
  - **in correct school uniform and**
  - **demonstrating considerate and positive behaviour at all times**

**It is well known in our community that Maitland High School does not tolerate disruptive or poor behaviour from its students.** The school has highly-effective student wellbeing and discipline systems in place to ensure that the learning needs of all students are met with care and fairness. Support and extension are provided based on each student's unique learning needs.



# Welcome to Maitland High School

Our student behaviour expectations are simple and transparent:

- 1) All students have the right to learn in settled and productive classrooms.
- 2) All students are valued, equal and unique and are supported to set high personal learning goals for a positive future.
- 3) All students have a right to be free from anti-social, aggressive or threatening behaviour in the playground.

All students at MHS are aware that transgressing these basic rights of fellow students is not tolerated and our response to transgressions is swift and thorough, based on the fair and transparent application of: The Behaviour Code for Students; Student Discipline in Government Schools; Suspension and Expulsion of School Students DoE policies and procedures.

## Does MHS have a strong and effective student wellbeing focus? YES!

Our school has a highly effective Wellbeing network of year advisers, head teachers, school counsellor, student support officer and learning and support teachers. All students with additional learning needs have Individual Learning Plans and every one of our students has access to our Wellbeing supports and they are encouraged to seek our assistance whenever an issue arises which impacts on them.

In particular, our school does not tolerate any kind of bullying behaviour or harassment. At our school, the culture is that students feel able to seek help from their year adviser, deputy or principal and any incidences of anti-social behaviour are acted on swiftly so that the negative behaviour is stopped.

## What sort of additional or special programs does the school run?

We have:

- An **outstanding Information Technology Program** where our students are coding and learning industry-standard applications and software use.
- A **Talented Sports Program** which provides individual training and mentoring to gifted young sports-people across a wide range of sports. Our Basketball, Netball, and Rugby League teams are frequently in the Top 8 in the state and we have a State Development Squad-level Cricket coach on staff!
- An **exceptional Creative and Performing Arts Program**, where Drama, Dance, Music and Visual Arts are nurtured by enthusiastic and talented teachers!

Public Education and our school in particular, aims to build a healthy and harmonious community of learners. Issues of class, race, gender and all other forms of exclusion, are eliminated through diversity, understanding and inclusion, whilst actively teaching that belonging, community, learning and achievement are for all.

# Welcome to our school!

# En Avant!

# Aboriginal Education

The Aboriginal Tutorial Room supports our Aboriginal and Torres Strait Islander students academically, culturally and socially. We can offer support with assessment tasks, exam preparation and in class learning. We value the role of parents, family, carers and community in the whole education experience for each individual student and as such are a contact point for families and services.

We work closely with lots of community organisations such as Mindaribba Local Aboriginal Land Council, Youth Express, NRL School to Work, Awabakal Medical Services, AECG, Maitland Regional Art Gallery and Universities

Our association with the AECG sees students' achievements regionally recognised with the Wamay Kuwaykuway awards. The AECG also organises interschool sporting competitions that celebrate connection through 3 on 3 basketball, touch football and other events. The junior AECG give students leadership opportunities and a chance to guide school decisions and priorities.

Our students often attend open days and even week-long camps. These University funded camps are often a highlight of many of our senior students' year where they come together with other motivated Aboriginal and Torres Strait Islander students from all over the country to experience what University has to offer. Many students who have attended these camps have gone on to study at place such as University of Sydney, University of NSW, Australia National University and University of Newcastle, for many the first in their family to do so.

We also have strong connections with primary and pre- schools where we take dance groups and share painting, weaving, traditional sports and visits to sacred sites.

We have targeted year group cultural activities throughout the year.

Minimbah outdoor learning space is a valuable whole school resource – a yarning circle and native garden. This natural learning environment is a beautiful complement to our traditional classrooms.





## Aboriginal Education



We are proud of our Aboriginal students and their outstanding achievements and contribution to the positive culture of our school!





# Key Staff Member 2021

Ms Paula  
Graham



**Principal**

Mrs Belinda  
James-Cliff



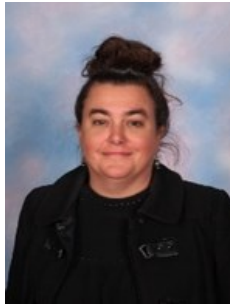
**Deputy  
Principal  
Yrs 7, 9 & 11**

Ms Melissa  
Schatz



**Deputy  
Principal  
Yrs 8, 10 & 12**

Ms Brittany  
Benton



**Deputy  
Principal  
Assist  
Yrs 7, 9 & 11**

Mr Andrew  
McKay



**HT Maths &  
Deputy  
Principal  
Assist  
Yrs 8, 10 & 12**

Mrs Stephanie  
Tedd



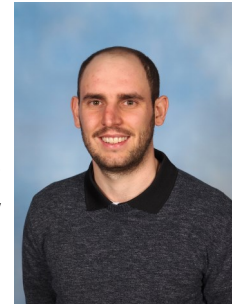
**Year Advisor  
Assistant**

Mr Matthew  
Lovegrove



**Year 7  
Advisor**

Mr Josh  
Noble



**Year 8  
Advisor**

Mr James  
Keith



**Year 9  
Advisor**

Mrs Melanie  
Goward



**Year 10  
Advisor**

Mr Robert  
Eaton



**Year 11  
Advisor**

Mr Dane  
Hockley



**Year 12  
Advisor**

Ms Toni  
Williams



**Learning and  
Support**

Mrs Leanne  
Wilson



**Learning and  
Support**

Mrs Omra  
Wells



**PLC**



# Key Staff Member 2021

Mr John  
Norberry



**HT English**

Ms Jayne  
Cameron



**HT Special  
Education**

Mr Scott  
Parrey



**HT Science**

Mrs Michelle  
Matthews



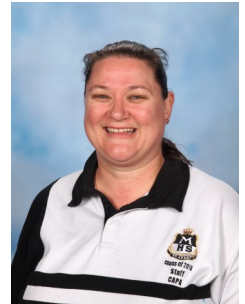
**HT HSIE**

Mrs Donna  
Howarth



**HT TAS**

Ms Yvonne  
Ryan



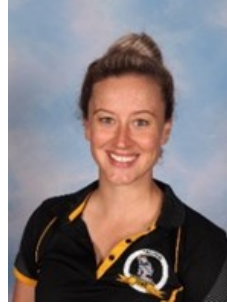
**HT CAPA**

Mrs Donna  
Chapman-  
Hardy



**HT of Admin &  
Computers**

Ms Stephanie  
Primrose



**HT PDHPE**

Mrs Melissa  
Bristow



**HT  
Teaching &  
Learning**

Mrs Sarah  
Gambrill



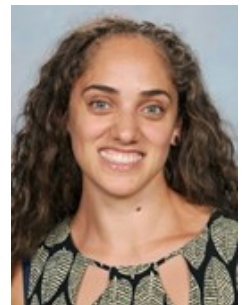
**HT Wellbeing**

Mr Robert  
Eaton



**HT Wellbeing**

Ms Genevieve  
Henry



**HT Learning  
Support**

Ms Amanda  
Morgan



**Student  
Support  
Officer**

Ms Chantal  
Tanna



**Aboriginal  
Education  
Officer**

Mr Andrew  
Roberts



**Aboriginal  
Education  
Worker**

Mrs Lynn  
Glascott



**Library  
Support &  
First Aid**

# Keeping in Touch

## Getting Involved – Join our P&C

We have an active P&C group that supports the school in a number of important ways. They are always looking for new faces and new ideas, so there are several ways to get involved.

**P&C Meetings** are held on the first Wednesday of each month. They start at 6pm in the Staff Common Room, above the main entrance to the school. Principal Paula Graham and the P&C discuss a variety of issues that concern students, parents, school staff and the community.

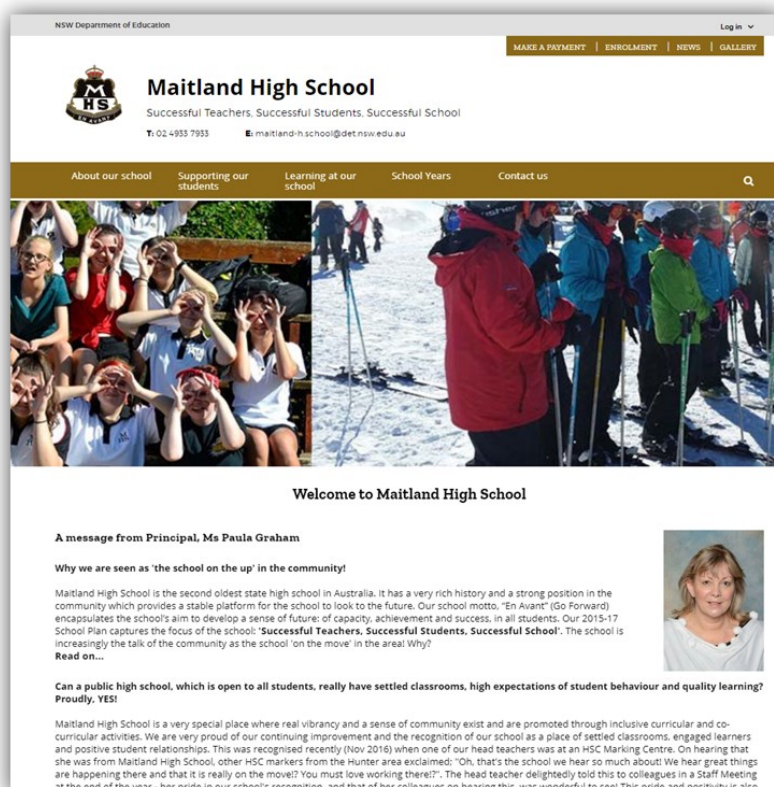
**The school canteen** is run by the canteen committee and we are always looking for new volunteers. We would love to have you come and join the team for a few hours a month! General volunteer hours are from 8:30am to 12:30pm.

**Fundraising** is another way our P&C supports the school. The sponsoring of the new school bus, raising funds to support the shading facilities and general seating around the school are a number of key installations which were made possible by the generous help of the P&C. Come and get involved!

For further information please phone: **JOY BOWER** on **4933 0068**

## Check out our Maitland High School Website

Go to **www.maitlandhigh.com.au** and take a look at our school website. There is plenty of relevant curriculum and school organisation information here, links to helpful sites, and photographs of our students learning, playing sport, competing and performing!

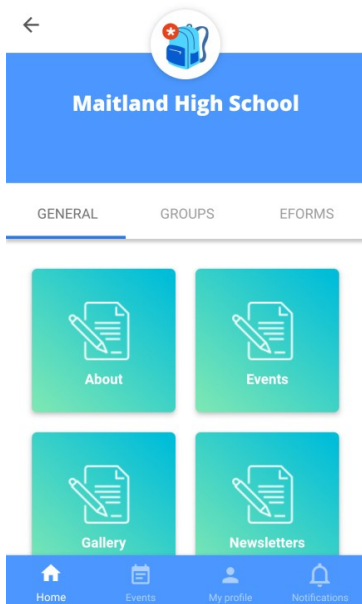


The screenshot shows the homepage of the Maitland High School website. At the top, it features the NSW Department of Education logo and navigation links for 'MAKE A PAYMENT', 'ENROLMENT', 'NEWS', and 'GALLERY'. The school's name 'Maitland High School' is prominently displayed, along with the tagline 'Successful Teachers. Successful Students. Successful School' and contact information: 'T: 02 4933 7933' and 'E: maitland-h.school@det.nsw.edu.au'. A navigation menu includes 'About our school', 'Supporting our students', 'Learning at our school', 'School Years', and 'Contact us'. Below the menu are two large photographs: one of a group of students cheering and another of students in winter gear on a snowy slope. The main content area is titled 'Welcome to Maitland High School' and features a message from Principal Ms Paula Graham. The message describes the school's history, motto 'En Avani' (Go Forward), and its focus on 'Successful Teachers, Successful Students, Successful School'. A small portrait of Ms Paula Graham is included. The message concludes with the school's commitment to being a public high school open to all students, with settled classrooms, high expectations, and quality learning. A final paragraph expresses pride in the school's recognition and the positive atmosphere.



# Keeping in Touch

## Download our Skoolbag App



One of the most popular ways to stay informed is to download our Skoolbag App.

<http://www.skoolbag.com.au/parentinstructions.pdf>

Just go to the App Store, Google Play Store, or to the website – and find our Maitland High School App.

We use the app to send out alerts and reminders to students, parents and carers, so that you will always have the information you need. You can also make a payment via the app, or on our website.

Once you download the app, **make sure you set up your profile so you only receive the reminders you need. You'll find your new Year 7 group ready for you.**

## Like us on facebook

While you are unable to have a facebook account until you are 13 years old, you might like to start following our Official School facebook page with your parents to see the sorts of events and activities you can look forward to when you come to high school!

You'll find us at <https://www.facebook.com/maitlandhigh/>



## Respect

- Follow all instructions
- Care for people and property
- Be polite



## Responsibility

- Right place, right time
- Right uniform
- Right behaviour – think first

## Personal Best

- In class, on task
- Be prepared
- Challenge yourself



### MAITLANDhighschool PBL Classroom Expectations



- ✓ Phone is off and in bag
- ✓ Follow all instructions
- ✓ Be Polite
- ✓ Begin class quietly and sensibly
- ✓ Be prepared
- ✓ Challenge yourself





# Zeros Aren't Permitted

## means:

Correct books & equipment every lesson

All work is completed with care and pride

Correct spelling and punctuation matter

Please ask and ask again if you don't understand

Trying triumphs, persistence wins

Individual goals are critical to achievement

Disruption in class is not tolerated

Antisocial or bullying behaviour is not tolerated

Everyone has a right to learn in a safe and settled  
environment;

no-one has the right to take that away.

# Hard and Fast 5

At MHS, the following are never tolerated:

- Physical violence
- Bullying, harassment
- Alcohol or drug use
- Swearing at a teacher
- Persistent disruption



***They will result in  
Suspension.***



# Mobile Phones

Mobile phones are turned off and put away in bag before entering the classroom.

Ear-pieces are removed and put away in bag.

*One* request by teacher to do so at the classroom door.

Any infringement: phone is placed in envelope and taken to principal for the remainder of the day.

Phone breach recorded in Sentral more than 5 times: stored with DP.

Phone breach occurs repeatedly: parent meeting with principal; phone banned from school for a month. Formal Caution.

Breach of ban: Suspension

No excuses.



# MHS Classrooms

## 3 Consistencies

No disruptive or disrespectful behaviour  
in class

Mobile phones are off and in bags

Equipped and engaged in learning.

No excuses.





## At Maitland High School, students are expected to:

- ✓ Follow school and class rules and follow the directions of their teachers
- ✓ Strive for the highest standards in learning
- ✓ Respect all members of the school community and show courtesy to all students, teachers and community members
- ✓ Resolve conflict respectfully, calmly and fairly
- ✓ Comply with the school's uniform policy or dress code
- ✓ Attend school every day (unless legally excused)
- ✓ Respect all property
- ✓ Not be violent or bring weapons, illegal drugs, alcohol or tobacco into our school
- ✓ Not bully, harass, intimidate or discriminate against anyone in our school



## Students demonstrate this by:

- **Attending all classes and arriving to class on time**
- **Turning phone off and putting it away before entering the classroom**
- **Coming to class prepared with equipment and the intention to engage in learning**
- **Following directions without arguing with the teacher**
- **Focusing on work at all times, without talking and disrupting the class**
- **Always making the best effort to learn: persisting, trying hard, remaining focused and asking for help when required**
- **Demonstrating politeness and respect to all: other students and school staff**
- **Never threatening, verbally abusing, harassing, teasing or hitting another person**

## Consequences of infringing Student Behaviour Expectations

Classroom teacher level Actions (Disruption)	Head teacher level Actions (Repeated misbehaviour and disruption)	Deputy or Principal level Actions (Persistent misbehaviour and disruption)
Move seats	Lunch detention	Behaviour monitoring
Lunch detention	Parent / carer contacted	Formal Caution
Completion of work in own time	Deputy Direct - students on DP card	PLC placement
Parent / carer contacted	Email /phone parent /carer	No school representative sport
Show improvement and apologise	Senior Placement	No excursions
Phone handed in to Principal		Alternate education centre
Behaviour referral		Suspension
Refer to Head Teacher		Expulsion
Deputy Direct - students on DP card		

# What is High School like at MHS?

We have wonderful students here!

## Question: What are your concerns or fears?

- I might be in a class with none of my friends.
- Harassment by other kids.
- I won't know anyone or make new friends
- I worry that people will tease me
- That the work will be too hard.
- Getting lost and going into the wrong room.
- Getting bullied.



These are understandable worries when young people are coming to a new school for the first time, however, at MHS, the culture is that:

**Students feel comfortable to let a Teacher, Year Advisor, Deputy Principal or the Principal know if someone or something is causing them concern. The school has a proud reputation for acting promptly and successfully to resolve issues and**

**Ms Graham is very firm that she NEVER tolerates bullying behaviour or disruptiveness in class!**

Quite simply, if we know about it, we can resolve the problem, prevent its recurrence and ensure our young people feel happy and supported.

If something is worrying you, tell a teacher, year adviser, deputy principal or the principal and tell your parents/carer. The school makes student wellbeing a priority and effective action ensures our school remains a safe, happy and caring learning environment where the focus is on learning and success.

Parents /carers, if you are wondering if you should call because something isn't right, the answer is always, 'Yes'. It is easier to solve problems while they are small, than it is to allow the problem to grow or cause stress for your child. The principal, deputy principals, and year advisers are always available to help.





**Our Year 7 ONLY Playground**



**Year 7 has more than a third of the school all to themselves at recess and lunch times!**



## Year 7 Camp

We get Year 7 off to an exciting start with a trip to the Great Aussie Bush Camp which is currently scheduled for Monday 8 March until Wednesday 10 March 2021.

This 3-day camp helps you get to know other Year 7 students, and lets you participate in a great range of friendship-building activities.

The Great Aussie Bush Camp is a NSW Sport & Recreation Camp and their experienced staff will lead you through fun and challenging activities like their high-ropes course, a range of water-based activities and group activities after dinner.







Year 7 & 8 Talented Sports Program and Dance Ensembles





# School Fees



## The General Contribution

This payment allows the school to purchase consumable materials such as stationery, first-aid/hygiene requirements, printing materials, additional learning aids, sports equipment and additional Library resources. Whilst not compulsory, the General Contribution allows for the purchase of improved educational resources. It is requested that you make this contribution on behalf of your student(s).

Parents in financial difficulty are asked to write to the Principal if they wish to seek a reduction of the general contribution. The school does not receive any funds for this purpose.

## Payment

An early payment of the school contribution is appreciated. You may choose to pay contributions for the whole year, each semester or each term.



*Payment may also be made on our website, via the Skoolbag App or over the phone through use of a credit card.*



# Stationery & Equipment required for Year 7

## What do you need to bring to high school?

To be ready to start high school, you'll need a uniform, a school diary, some books and stationery and a school bag. It is essential that all students are organised with these necessities each and every school day.

## Book packs

We will give you a list of everything you need to bring on the first day of school. You can collect all the items individually, or you can buy the items altogether as a pack.

Remember that having your name written on all your belongings means that you can keep track of everything.

A full list of stationery is included on the following page.

## Computer

Our ICT (Information and Communications Technology) program is growing fast, and students and teachers benefit from using computers in classrooms. Bringing a laptop computer to school lets you store and complete your schoolwork in electronic form.

You can connect to the Department of Education's network and access the internet from everywhere in the school. We have spare laptops that students can use when a teacher schedules a lesson of computer-based learning, but you might be more familiar with your own. Please note that tablets and phones are not useful in a high school BYOD program. Later in this booklet, you'll find our BYOD guidelines.

## School Bag

You might need a new bag for high school. You will probably be carrying more books than you needed in primary school, maybe even a laptop computer. A strong, sturdy bag will help you carry everything you need.

We don't have a nominated school bag; you can bring any bag that suits your needs. Make sure the bag is right for your body size, and it can be adjusted using buckles or straps. Your new school bag needs to be comfortable, and should spread the load across your shoulders, to help protect your spine.





## Stationery & Equipment required for Year 7

Below is a list of the books and stationery that each student will need to start the year:

5 x A4 Exercise Books, **192 Page** (2 for English, 1 for Science, 1 for History, 1 for Geography)  
5 x A4 Exercise Books, **96 Page** (2 for Maths, 1 for LOTE, 1 for TAS, 1 for Music)  
1 x Casio Scientific Calculator fx-82AU PLUS II (first or second edition)  
1 x Geometry Set  
2 x Display Books (1 for Music, 1 for TAS)  
2 x 2B Pencils  
2 x USB drives  
5 x Black Pens, 5 x Blue Pens, 2 x Red Pens  
Highlighters in 4 colours  
1 x 30cm Ruler  
1 x Eraser  
1 x Glue Stick  
1 x Scissors  
Coloured Pencils  
Sharpener  
1 x A4 Visual Arts Diary 120 Page

Parents have 3 options for purchasing the above equipment.

- 1) **Stuart and Dunn** - The following website is a simple and easy way to purchase the entire equipment list. They will delivery purchased packs to the school for us to hand to your child on day 1 of Year 7 - <https://www.booklists.com.au/stuartanddunn/>
- 2) **Officeworks Rutherford** - Officeworks has been sent the MHS Year 7 2021 stationery list. Let them know you have a child starting with us next year and they will assist you to collect and purchase all items in store.
- 3) **Build your own** - Purchase each item individually from your store of choice.

You will also need the following items for TAS practical classes:

- Leather-covered shoes
- Safety glasses and work apron (available to purchase from the school)
- An old pillow case

# Year 7 Lockers

## Lockers are available at MHS:

These lockers are free for Year 7. Students in other years pay \$10 annual hire fee plus \$10 deposit on the lock.

**Please note: Students must supply their own padlock. Some examples are included below.**

### Supplier: Bunnings:



**Syneco**  
Syneco 4 Dial Brass Combination Padlock

★★★★★ (0)

Buy in-store  
Buy online 

**\$11.80**

### Supplier: Coles:



**Master Lock Brass Combination 30mm**  
**\$16.00**

1 pack

Add 1 for \$16.00



# School Uniform

We are always receiving compliments about how smart our new uniform looks. Based around our school colours of black and white, with a touch of red, our uniforms keep students looking neat, and proud of the school they represent. There is no set summer or winter uniform; just dress for the weather.

We are a sun safe school and do encourage our students and staff to wear sunhats in the playground.

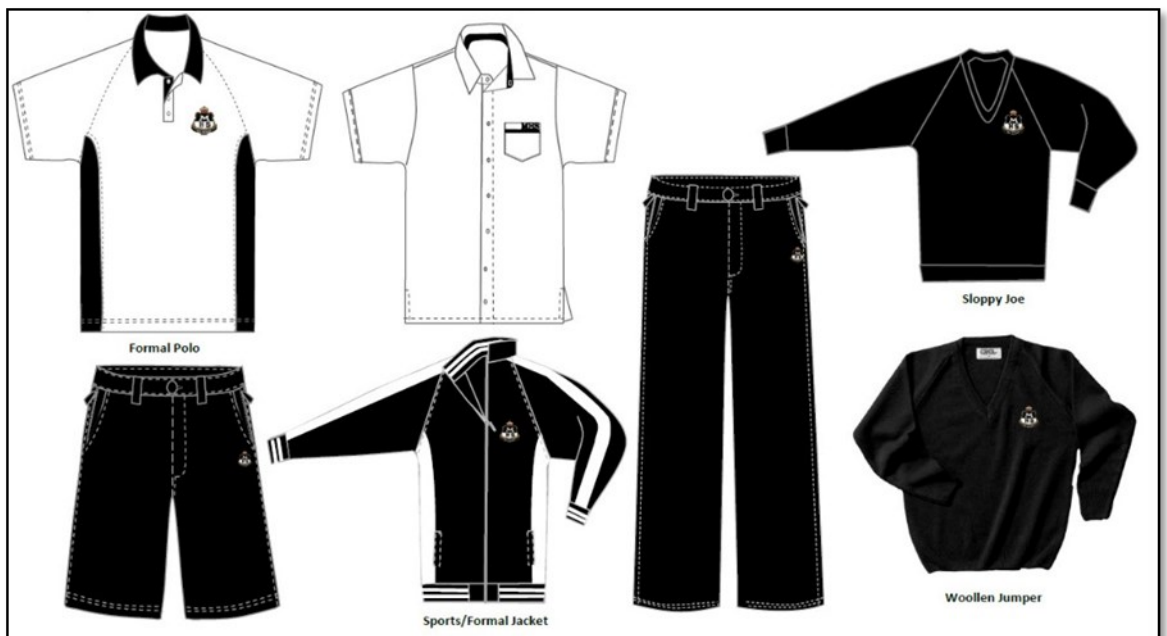
The next few pages will tell you everything you need to know about uniform, including what to wear and where to buy it.

Check out our website for larger images and further information.



## Junior Girls' Uniform

## Junior Boys' Uniform





# School Uniform

## Sports Uniform for both boys and girls:



## 2021 Uniform Pricelist

Girls Uniform: Yr7-Yr12	Size	Price	Size	Qty
Blouse - Yr7-Yr10	J8-L20	\$36.00		
Blouse - Yr11-Yr12	J10-L20	\$36.00		
Formal Polo - Yr7-Yr10	J10-L20	\$40.00		
Tartan Skirt	J10-L20	\$55.00		
Black Skirt	J10-L20	\$50.00		
Shorts	J8-L20	\$30.00		
Pants	J14-L20	\$35.00		
Boys Uniform: Yr7-Yr12	Size	Price	Size	Qty
SS Shirt - Yr7-Yr10	J8-3XL	\$36.00		
SS Shirt - Yr11-Yr12	J8-3XL	\$36.00		
Formal Polo - Yr7-Yr10	J8-3XL	\$40.00		
Formal Shorts	J8-3XL	\$42.00		
Formal Trousers	J10-3XL	\$47.00		
Outerwear	Size	Price	Size	Qty
Jumper	All Sizes	\$67.00		
Jumper Fleece	J10-3XL	\$39.50		

Sports Uniform	Size	Price	Size	Qty
Sports Polo	J8-3XL	\$40.00		
Sport Shorts - Sales Item	J10-3XL	\$30.00		
Sport Shorts Stretch MF	J8-3XL	\$36.00		
Jacket Super Fleece	J8-3XL	\$69.00		
Tracksuit Pants	J8-3XL	\$45.00		
Accessories	Size	Price	Size	Qty
Sports Cap		\$18.95		
Sport Sock Ankle White 2pk	All Sizes	\$11.95		
Crew Sock	All Sizes	\$6.25		
Microfibre Tights	All Sizes	\$9.50		
Gloves		\$7.75		
Scarf		\$10.80		
Leather Belt	All Sizes	\$15.75		
Tab Tie - Yr11-Yr12		\$16.00		
School Tie - Yr11-Yr12		\$22.50		
Fabric Marker		\$3.60		

# School Uniform

## The Uniform Shop

0423 326 648

[maitlandhigh@alinta.com.au](mailto:maitlandhigh@alinta.com.au)



Shop hours

**Mondays: 2:00 - 4:00pm**

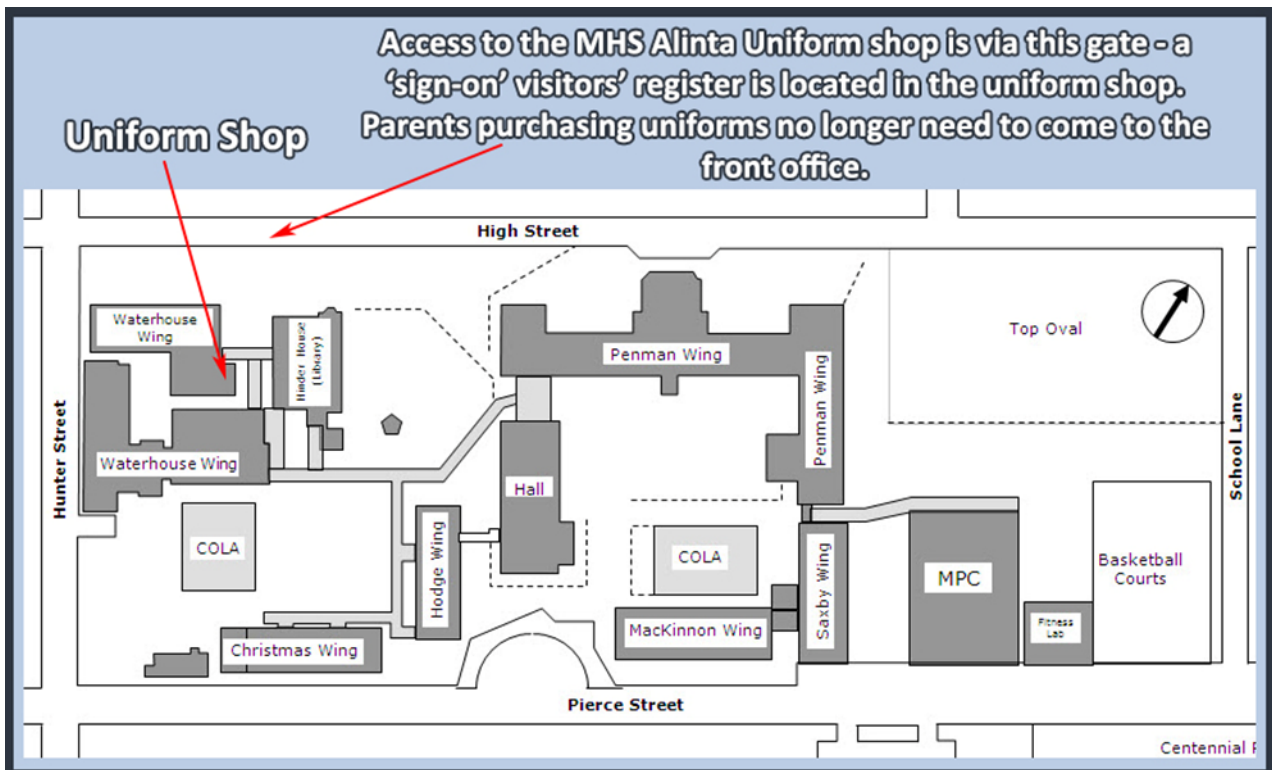
**Wednesdays: 8:00 - 10:00am**

**Fridays: 8:00 - 10:00am**

Uniform price list & online shopping available at:

[www.alintaapparel.com.au](http://www.alintaapparel.com.au)

### Where is the Uniform Shop?



# School Uniform

**Extract from current DoE policy** "It is mandatory that students carrying out practical activities using chemicals or equipment in schools wear enclosed leather footwear. Sandals, open footwear or high heeled shoes must not be worn in workshop areas or laboratories."

The shoes below ARE suitable and meet WHS (OH&S) requirements at Maitland High School because:

- they have leather uppers,
- there are NO punched holes or mesh,
- they are NOT canvas,
- they cover the upper part of the foot.

A student IS NOT allowed to participate in practical lessons if she/he is wearing footwear that does not meet WHS (OH&S) guidelines. This includes science experiments, cooking, wood work and metal work in TAS.



The styles shown below, and styles similar to these, **ARE NOT acceptable in practical lessons.** A practical lesson is any lesson where explicit safety rules apply. For example, woodwork, metalwork, food technology, hospitality, science etc. The styles shown below are not WHS (OH&S) compliant at Maitland High School.



**Please note:**  
Canvas 'VANS', 'Converse' and other canvas shoes are **not** acceptable at MHS.



# MHS Procedures

All notes should be written by parent or carer (not student) clearly showing student's name, year, date and must be signed by parent.

## Late Arrivals – All students arriving after first bell at 9.05am

Do not go directly to class; go to the office to get a late slip. Teachers need to check the late arrival slip before students are allowed into class.

A parent/carer should accompany student or a note be handed in, explaining reason, when students arrive late.

If the late arrival is unexplained, an SMS will be sent to the parent/carer as a reminder request for a reason to be provided, as per legal requirements.

## Early Departures

Students are to hand in a note from their parent/carer to their Deputy Principal before Period 1. The note must explain why an early departure is required. Please include student name, date and time required, reason and parent signature.

The Deputy Principal will authorise the early departure by issuing a yellow Leave Pass slip, which the student MUST show their class teacher in order to leave their classroom and then give this Leave Pass to the Front Office before leaving the school. Students will then be marked off the school roll and permitted to exit the school.



**Students hand in Early Departure notes to their Deputy Principal before school and show to the Office staff when they are leaving to enable their sign out and exit from the school.**

If a student subsequently returns to school e.g after an appointment, they MUST present to the Front Office to be signed back in and be given a Late Pass to re-enter class.

Students need to see office staff to have foyer doors opened so they can meet their parent or carer.

If a parent needs to collect a student unexpectedly, they can ring the school office or call into the school and the students will be notified. Parents should not – ring or message students directly.

If possible, student collection at the end of a lesson is preferred.

The parent/carer will need to sign the student out at the school Front Office.

# MHS Procedures

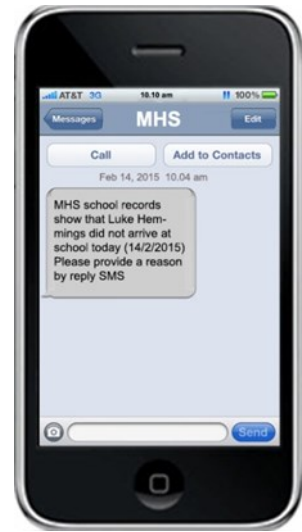
## Student absence

When a student is marked absent an SMS message will be sent to the parent/carer. The parent/carer can, if he/she wishes, reply with an SMS. Other communication options you may prefer to report of absence can include: a note, phone call, email or the Skoolbag App.

When replying via SMS, please remember to include the student's full name, date and a simple explanation for their absence (e.g. sick, holidays, personal/family reasons).

Example – the reply might be, "Liam Hemmings 28/04/2021 - sick"

For all other written methods, please include student name, date, reason and parent signature.



***It is also very important that all contact details are accurate at all times. Please ensure the administration staff are aware of any changes whether short term or long term. E.g. living arrangements for your son/daughter have changed, emergency contacts or changes to parent/carer phone numbers.***

## Mobile Phones at school

Students at MHS are allowed to bring mobile phones to school, however, they may only be turned on and used before and after school and during lunch and recess breaks. **Before students enter the school buildings, mobile phones are turned off and are put away in bags – not in pockets!** Misuse of mobile phones in class is uncommon at MHS.

Any student who infringes the Mobile Phone Procedures at Maitland High School is directed to take his/her phone to the Principal and it is collected by the student at the end of the day. Persistent misuse of mobile phones during class time is rare, however, if such an instance were to occur, parents/carers will be contacted and the mobile phone is banned from school until responsible use can be guaranteed.

**The safe keeping of mobile phones is the responsibility of owners. Students are advised not to leave their phones or other valuables in bags unattended.** While the school will endeavour to locate lost or stolen phones, it accepts no responsibility for their safe keeping or replacement.

### In Class



Turn off phones and mobile devices before entering class



### Recess and lunch



# BYOD Information

**All students, years 7 to 12, are allowed to participate in BYOD (Bring Your Own Device),** pending the sign-off and **return of the MHS BYOD Usage Agreement.** Information pertaining to BYOD at MHS will be posted on the school website. Initially, the most important aspect for those wishing to participate, is the device specifications which will be acceptable to the school.



## Suggested Device Specifications:

- A wireless internet connection
- A USB port (for a flash drive)
- The ability to accommodate office applications (such programs could be but are not restricted to Microsoft Office, Google Docs, open office etc)
- Support a keyboard (must be portable)
- Have a minimum storage capacity of 16Gb
- Battery life of at least 6-8 hours
- It is preferred that the device does not come with 3G capability as the school Wi-Fi network filters unwanted, potentially dangerous content. 3G access will be banned at MHS.
- Screen size must be no smaller than 10", recommended because less than this is difficult to view.
- This policy includes, but is not limited to, personal mobile devices such as laptops, iPads, Android and Windows tablets. Smart Phones will not be considered as BYOD devices, however, under teacher direction only they may be used as class resources.
- Devices are not to be shared.
- Devices will not be physically networked. Content will only be accessed through the school's Wi-Fi and will be subject to monitoring and filtering. The school may block student access to the Internet.
- Printing of documents from student-owned devices can be done using a USB device via the school library.
- Minimum operating system = Windows 7 or OSX 10.9 for Apple machines. Please note that Android tablets and Apple iPads are presently limited in their connection possibilities to our Wi-Fi.



## Timetables & Bell Times

Monday & Tuesday		Wednesday		Thursday & Friday	
Period	Start/Finish	Period	Start/Finish	Period	Start/Finish
1	9.05 10.10	1	9.05 10.05	1	9.05 10.10
2	10.10 11.10	<b>Assembly</b>	10.05 10.30	2	10.10 11.10
<b>Break 1</b>	11.10 11.30	<b>Break 1</b>	10.30 10.50	<b>Break 1</b>	11.10 11.30
<b>Break 2</b>	11.30 11.50	2	10.50 11.45	<b>Break 2</b>	11.30 11.50
3	11.50 12.50	3	11.45 12.40	3	11.50 12.50
4	12.50 1.50	<b>Break 2</b>	12.40 1.00	4	12.50 1.50
<b>Break 3</b>	1.50 2.10	<b>Break 3</b>	1.00 1.20	<b>Break 3</b>	1.50 2.10
5	2.10 3.10	4	1.20 2.15	5	2.10 3.10
<b>Home</b>	3.10	5	2.15 3.10	<b>Home</b>	3.10
		<b>Home</b>	3.10		

*Optional 'Homework Hub' in our Library 3.10-3.30 with rotating subject teachers.*

### Continuing in 2021: The Homework Hub

Following the final bell at 3.10pm, students are free to go home, or may visit our Homework Hub, held in our Library building: Hinder House. Operating from 3.10-3.30 daily, this homework centre will be staffed by teachers from different faculties on a rotation.

- At Maitland High School our timetable operates on a ten-day cycle made up of Week A and Week B.
- Each day commences at 9.05am and concludes at 3.10pm and contains 5 periods.
- Initially, you shall be provided with a paper copy of your timetable and you shall be taught how to follow it and how to access it on online via the Student Portal.
- On Wednesdays for Period 2 & 3, the following year groups 8, 9 & 10 have sport.
- A bell will sound to signal the start of the day, change of period, the start and end of each break and the end of the day.

***It is essential that all students are responsible with accessing their timetable and being prepared for each lesson with the necessary stationery and equipment.***

# Bus Transport & Opal Card Applications

## SCHOOL OPAL CARD

The school opal card gives eligible school students free or subsidised travel on public transport between home and school.



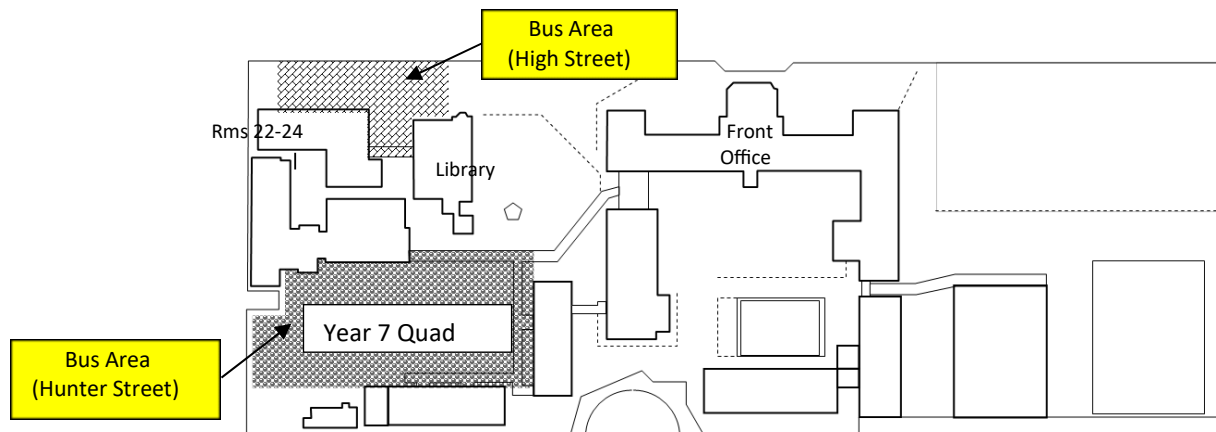
Please head to:

<https://www.service.nsw.gov.au/transation/apply-school-travel-pass>

To apply and for further information.

Alternatively, contact Transport NSW on 131 500.

Students who catch buses are supervised in a reduced Area 1 (Hunter Street buses) and in the area outside Rooms 22 to 24 (High Street buses).



## Bus Timetable Information

For current timetable information, you can phone Hunter Valley Buses, Thornton depot, on 4935 7200.

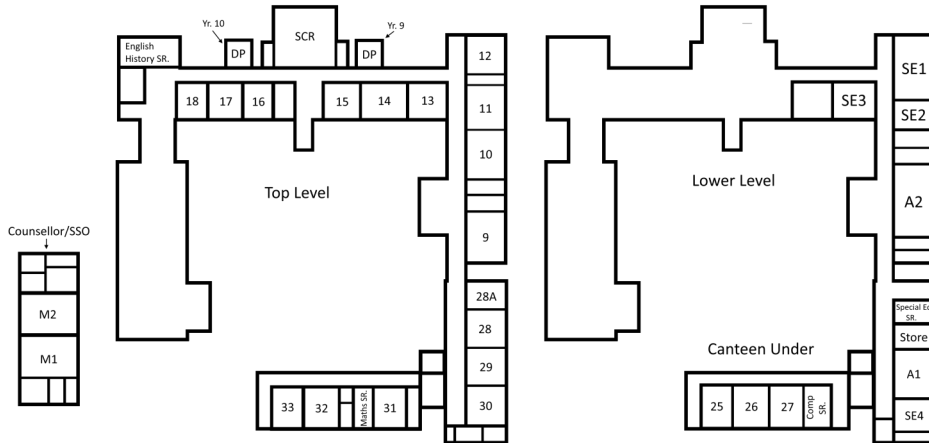
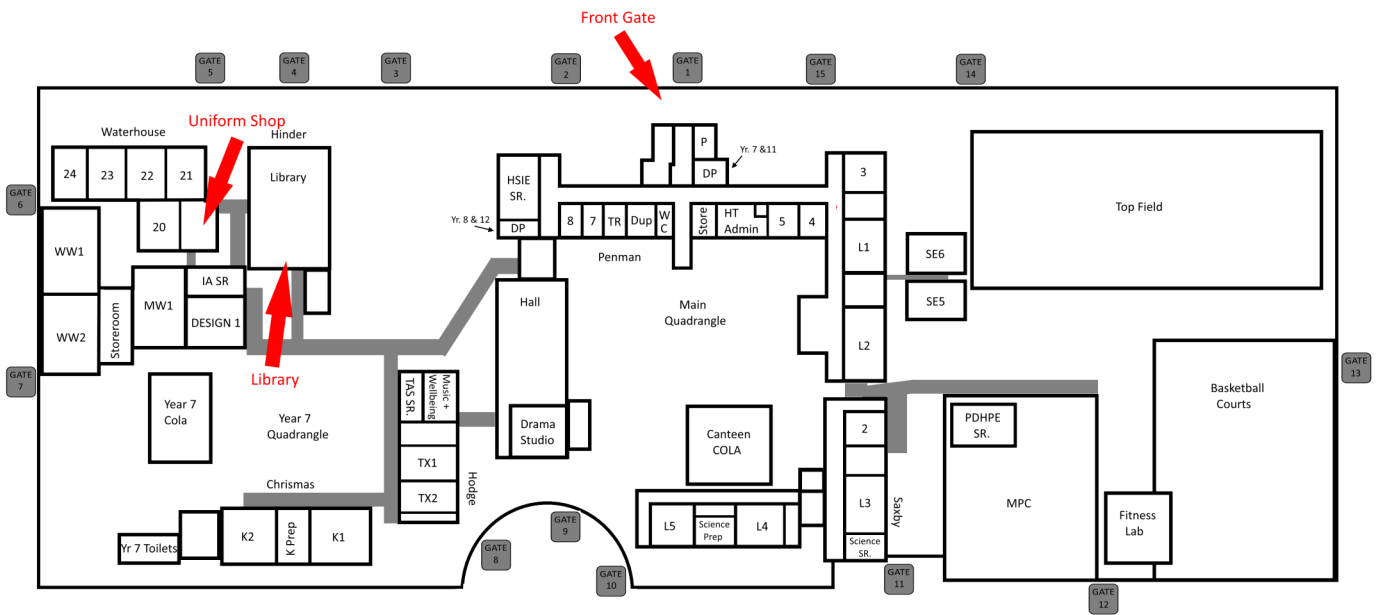
Timetables are available online at

[www.cdcbus.com.au/school/hunter-valley-buses-school-timetables](http://www.cdcbus.com.au/school/hunter-valley-buses-school-timetables)

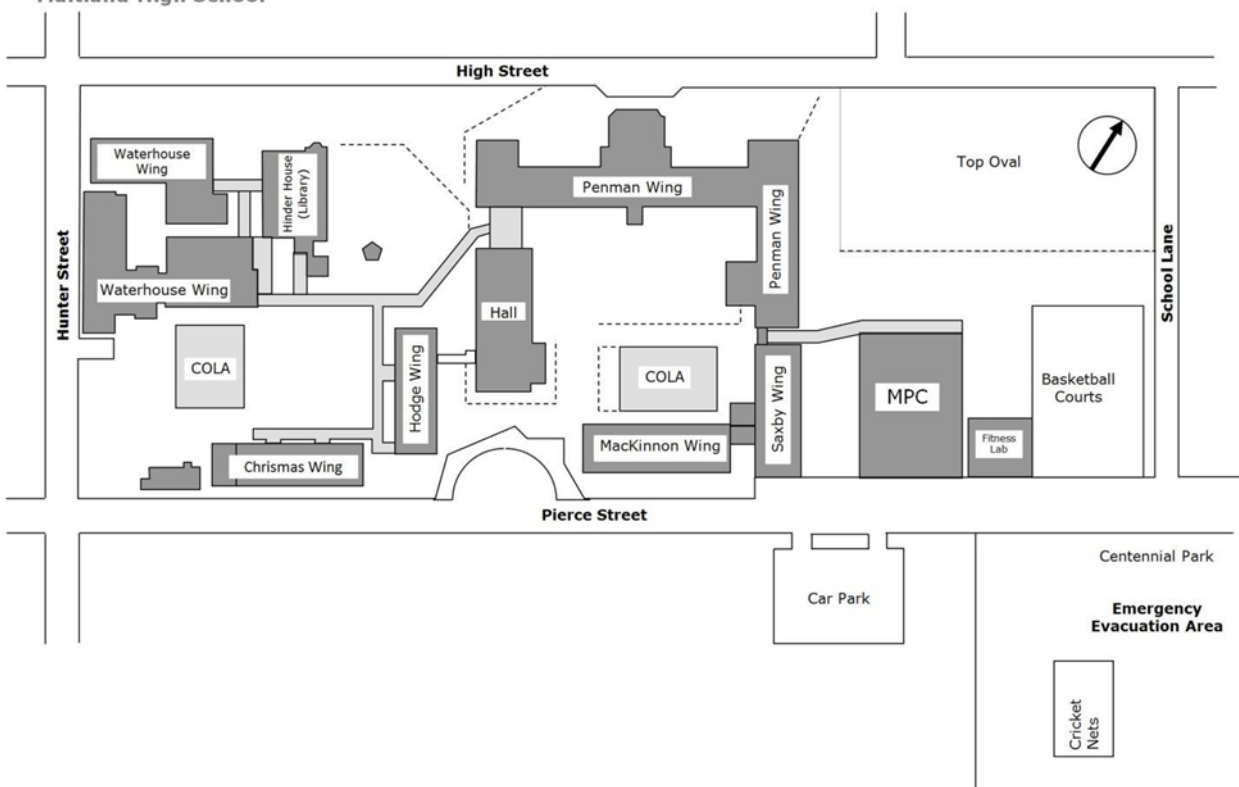
## What do I do if I miss my bus?

If your child misses his/her bus home, tell them not to worry and to go up to the Front Office and report to the principal or deputy principals who can contact you and provide supervision until you are able to collect your child.

# School Map



## Maitland High School





# Immunisation Information

## NSW School Vaccination Program For Year 7 Students



Dear Parent/Guardian,

A team of specially trained registered nurses will be visiting your child's school during Year 7 to offer free vaccinations against serious preventable diseases.

### **Vaccines offered:**

- Human Papillomavirus (HPV) vaccine (2 doses at least 6 months apart)
- Diphtheria-Tetanus-Pertussis (whooping cough) (dTpa) vaccine (1 dose)

### **What do you need to do?**

- ✓ Look for this Year 7 Parent Information Kit that will be distributed by your school at the beginning of 1<sup>st</sup> term
- ✓ Read the information included in the Kit (translated copies are available on the website below)
- ✓ **ENSURE FORM IS COMPLETED CORRECTLY**
- ✓ **SIGN FOR EACH VACCINE REQUIRED**
- ✓ **COMPLETE CONSENT FORMS IN BLUE OR BLACK PEN ONLY**



### **On the day of the vaccination clinic:**

- ✓ ensure your child has eaten breakfast the morning of the clinic
- ✓ ensure your child is wearing clothing that enables the upper arm to be exposed

### **After the vaccination clinic:**

- ✓ Ask your child for this record of vaccination
- ✓ when they arrive home on the day of the clinic – keep this record in a safe place (eg. baby's' blue book).

### **What if your child misses a vaccine?**

You won't need to do anything. Every effort will be made to catch-up missed vaccines at other clinics at your child's school during the year or the following year when they are in year 8.

### **More questions?**

Please contact Hunter New England Local Health District Immunisation Unit on 49246477 or visit

<http://www.health.nsw.gov.au/immunisation/Pages/schoolvaccination.aspx>

<https://www.health.gov.au/resources/videos/getting-your-hpv-dtpa-vaccinations-at-school-what-to-expect>

# Immunisation Information



## Facts about HPV and the vaccine

### **FACT: Both males and females can get HPV.**

It's very common – 9 out of 10 people have HPV at some point in their lives. Most people clear the virus without ever knowing they have it. It is when it persists in the cells that some types of HPV can, usually over decades, cause cancer.

Although cervical cancer is the most common type of cancer caused by HPV, it also causes cases of penile, anal and throat cancers in men and vaginal, vulval, anal and throat cancers in women.

The HPV vaccine protects against around 90% of cervical cancers, however it also provides protection against most of the genital cancers in men caused by HPV infection. Additionally, the vaccine protects against 90% of genital warts in both women and men.

As with any vaccine, the HPV vaccine may not fully protect everyone who is vaccinated and does not protect against all HPV types. The vaccine cannot help clear HPV infection that is already in your cells.

### **FACT: The vaccine works best when it's given before you're sexually active.**

You may not be thinking about being sexually active yet, however the vaccine works best if it is given before exposure to HPV – that is, before sexual activity commences.

The vaccine also works best when given at a younger age. Research shows that younger people create more antibodies to the vaccine than those aged in their late teens. This is why those aged 14 and under only need two doses instead of three. Waiting until you are older means that you need the extra third dose, which you may need to pay for.

### **FACT: You can be infected with HPV from one sexual partner, the first time you are sexually active.**

Condoms offer some but not total protection from HPV, as they don't cover all of the genital skin. They do offer protection from many other sexually transmitted infections though, and help prevent unwanted pregnancies.

### **FACT: There is no evidence that boys and girls who receive the vaccine have sex earlier than those who do not have the vaccine, and nor do they have more sexual partners once they become sexually active.**

Vaccination is a normal part of growing up, with the vast majority of children vaccinated at school.

### **FACT: The vaccine has been tested and proven to help prevent cervical abnormalities which can develop into cervical cancer.**

In initial clinical trials, the original vaccine was given to 20,000 women aged 16–26 years in 33 countries including Australia, before it was approved for widespread use.

# Immunisation Information



## Facts about HPV and the vaccine

These trials showed the vaccine is almost 100% effective in preventing abnormalities in cells in the cervix caused by cancer causing high-risk HPV types 16 and 18. These abnormalities are a proven precursor to cervical cancer. The trials of Gardasil9 demonstrated that this vaccine is almost 100% effective at preventing these cell abnormalities in the cervix caused by cancer-causing HPV types 31, 33, 45, 52 and 58 as well.

Further clinical trials involving more than 4,000 males aged 16–26 years from 18 countries showed the vaccine was 90% effective in preventing genital warts and abnormalities associated with penile cancer, and 78% effective in preventing anal disease, caused by HPV types 6, 11, 16 and 18.

### **FACT: The HPV vaccine is safe.**

The [Global Advisory Committee on Vaccine Safety of the World Health Organization](#) has reviewed all published and emerging data about the vaccines in real world use and declared HPV vaccines safe for use seven times so far. More than 270 million doses of HPV vaccines have been administered worldwide (as of May 2017). The vaccine's safety is still (and will always be) closely monitored by scientific organisations around the world including the World Health Organization.

All vaccines can have side effects. The reactions that people have had after the HPV vaccine have been similar to reactions from other vaccines. The most common side effects are pain, redness and/or swelling at the site of injection.

Very rarely, more serious side effects such as anaphylactic (allergic) reaction can occur, usually if you are allergic to an ingredient in the vaccine such as yeast.

All people are monitored for 15 minutes after having the vaccine. If an allergic reaction does occur, it can be treated quickly and successfully – every immunisation provider is trained and equipped to deal with such a reaction.

### **FACT: The vaccine cannot cause cancer or any other HPV-related diseases.**

The vaccine does not contain any live or killed HPV virus. It is made from a single protein like the one the virus has on its outer coat. When you have the vaccine, your body makes antibodies which it uses to fight the real virus if you're ever exposed to it.

**PLEASE NOTE:** The HPV vaccine is available for free for a limited time only and conditions do apply.

**MORE INFORMATION:** Contact your local immunisation provider or doctor. Visit [www.hpvvaccine.org.au](http://www.hpvvaccine.org.au).



# Immunisation Information



## HPV vaccine fact sheet for students

### What is HPV?

HPV stands for human papillomavirus. There are many different types of HPV.

Genital HPV is a very common sexually transmitted infection in males and females with around eight in 10 people being infected at some point in their lives. It usually causes no symptoms and goes away by itself, but can sometimes cause serious illness.

### What does HPV have to do with cancer?

Genital HPV infection can cause some cancers including cancer of the cervix, vulva and vagina in females and cancer of the penis in males. It can also cause cancers of the anus and mouth/throat, and genital warts in both males and females.

### How do people get HPV?

HPV is passed on from one person to another through intimate genital-skin contact, usually without the person ever knowing it. The virus enters the body through tiny breaks in the skin. You can be exposed to HPV the first time sexual activity occurs, from only one sexual partner.

You may not be thinking about being sexually active yet, however the vaccine works best if it is given before exposure to HPV – that is, before sexual activity starts.

### About the HPV vaccine

A vaccine has been developed that can protect you against 90% of cervical cancers, most of the genital cancers in males caused by HPV infection and 90% of genital warts in both females and males.

For people aged 14 and under, the vaccine is given as two injections in the upper arm, six to 12 months apart. It's very safe. The HPV vaccine was carefully tested before it was introduced. Over 270 million doses have been given safely around the world.

The vaccine works best when given at a younger age. Research shows that younger people create more antibodies to the vaccine than those aged in their late teens. This means by having the vaccine at age 12–13 you are better protected if you are exposed to HPV in the future.

If you're aged 15 or over when you get your first dose, or if you don't receive the injections at least six months apart, you will need three injections. Ideally, the three doses should be given at 0, 2 and 6 months – that is, the second dose should be given two months after the first, and the third dose four months after the second.

### Who can have the vaccine?

Girls *and* boys aged 12–13 can have the vaccine free of charge at school as part of the National HPV Vaccination Program.

The secondary school year the vaccine is given in varies across Australia. Usually it's offered in the first year of secondary school. Your parents or guardian can contact your local immunisation provider or doctor.

If you're outside of these age ranges, ask your doctor or school nurse for advice about the HPV vaccine and whether it's right for you.

### Why should I consider having the vaccine?

Having the HPV vaccine means you are far less likely to develop HPV-related cancers and disease in the future.

# Immunisation Information



## HPV vaccine fact sheet for students

Cancer Council and important health groups such as the World Health Organization all agree that having the vaccine is a good idea.

### How can I have the vaccine?

Under the school-based program, students eligible for the free vaccine will receive a consent card.

Your parent or guardian must sign this form and return it to the school before you can be vaccinated. If you and your parents/guardian agree that you should not have the vaccine, they need to note this on the form and return it to school.

The vaccine is also available from your doctor.

### What if I miss a dose of the vaccine?

Any missed dose at school can be obtained from your doctor. In some states missed doses are offered at your school.

### Tips for a stress-free vaccination day

- Wear short sleeves on the day if possible so the nurse can give you the vaccine in your upper arm easily.
- If you feel nervous, ask your teacher if you can go first, to get it out of the way.
- Make sure you have a good breakfast on the days when you have the vaccine.
- It's best to avoid too much exercise on the days you have the vaccine.
- After the vaccine most people feel fine. But if you don't feel well, make sure you tell the nurse, a teacher or your parents/guardians.

**More information:** Speak to your parents or school to find out more. Visit [www.hpvvaccine.org.au](http://www.hpvvaccine.org.au).





**Welcome to the second-oldest high school in Australia!**