

# MAITLANDhighschool New Student Booklet



## 2020



*Successful Teachers, Successful Students, Successful School*



*A quality education in a caring  
community of committed young learners*

Maitland High School  
20-32 High Street,  
East Maitland NSW 2323

Phone: (02) 4933 7933  
Fax: (02) 4933 7673

Email: [maitland-h.school@det.nsw.edu.au](mailto:maitland-h.school@det.nsw.edu.au)

Website: [www.maitlandhigh.com.au](http://www.maitlandhigh.com.au)

Facebook: [www.facebook.com/maitlandhigh](http://www.facebook.com/maitlandhigh)



Education - Truly vibrant schools!  
Public Schools





Meet our 2020 Captains, Matthew Goode and Josephine Cooke.





**There really is 'something different' about our school - and we're proud of it!**

**It's called community and high care for our students.  
It's called change responsive, with a creative approach to building the  
strengths, capacities and wellbeing of our students.**

**We work with our parents and carers and we ARE proudly inclusive!  
This is YOUR school!**

**Welcome!**





We are proud of our Aboriginal students and their outstanding achievements and contribution to the positive culture of our school!





## Why we are seen as 'the school on the up' in the community!

Maitland High School is the second-oldest state high school in Australia. It has a very rich history and a strong position in the community which provides a stable platform for the school to look to the future. Our school motto, "En Avant" (Go Forward) encapsulates the school's aim to develop a sense of future: of capacity, achievement and success, in all students. Our 2015-17 School Plan captures the focus of the school: 'Successful Teachers, Successful Students, Successful School'.

## The school is increasingly the talk of the community as the school 'on the move' in the area! Why? Read on...

### Can a public high school, which is open to all students, really have settled classrooms, high expectations of student behaviour and quality learning? Proudly, YES!

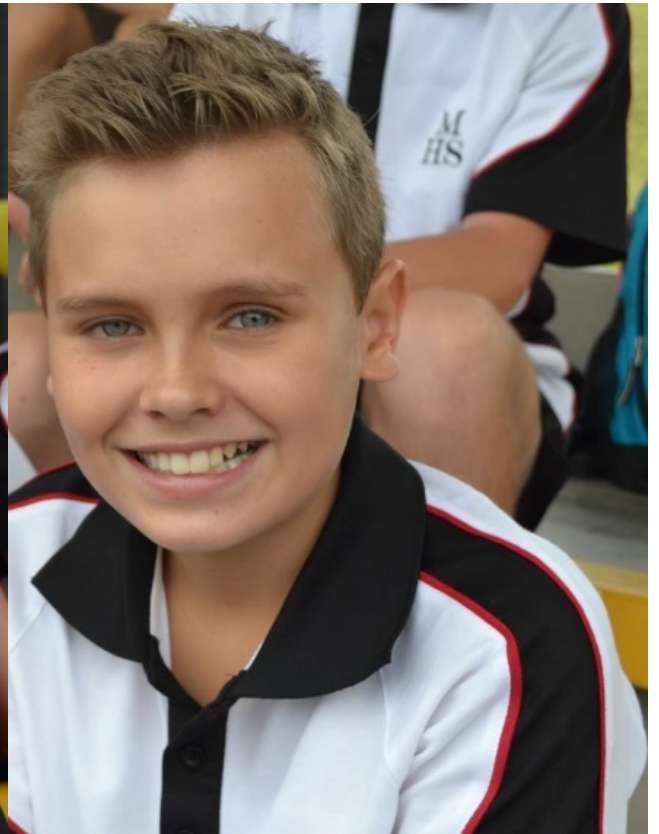
Maitland High School is a very special place where real vibrancy and a sense of community exist and are promoted through inclusive curricular and co-curricular activities. We are very proud of our continuing improvement and the recognition of our school as **a place of settled classrooms, engaged learners and positive student relationships**. This was recognised recently (Nov 2016) when one of our head teachers was at an HSC Marking Centre. On hearing that she was from Maitland High School, other HSC markers from the Hunter area exclaimed; "Oh, that's the school we hear so much about! We hear great things are happening there and that it is really on the move! You must love working there!" The head teacher delightedly told this to colleagues in a Staff Meeting at the end of the year - her pride in our school's recognition, and that of her colleagues on hearing this, was wonderful to see!

This pride and positivity is also reflected in our **exceptionally high teacher morale and commitment to the school**: in the end of 2016 Staff Survey, 99% of all teaching staff reported that they enjoyed working at MHS. This translates into **enthusiastic and committed teachers in high-performing and well-supported classrooms**. Staff morale is a telling indicator in a school: **MHS is a healthy, happy community and has a wonderful staff who care greatly about our students and their successes**. Come and find out first-hand about our school!

Maitland High School is a 'lighthouse' school, demonstrating that comprehensive public schools are also sites of high-care, high-quality learning and community building: all our parents can have confidence in their local public high school to deliver quality education in a safe and settled environment. Yes, we are an inclusive and proudly comprehensive high school serving a diverse community: we invite all parents considering our school for their child to come and meet with the principal for an individual guided tour and discussion to see and experience first-hand, our: high school tone; high standards and expectations, and our settled classrooms.









Principal, Paula Graham, has set a transparent academic improvement agenda of high expectations and committed focus on individual learners to ensure all students succeed.

Is the school academically focused?

Does it care and cater for individual learners?  
YES!

### How?

1. Our Teachers use **high-quality, explicit teaching** i.e. where the steps to successful learning are modelled for the learner.

2. **Learning activities focused on higher-order and conceptual thinking skills development in every Year, 7-12** and in every classroom across the school. These critical conceptual thinking skills are necessary for high Band 5 & 6 performance at the HSC and they need to be taught from the very first years of high school.

3. **We have a strong focus on literacy skills development in every classroom.** The ability to read well; understand complex or abstract ideas; express understandings and ideas fluently in oral and written language, with a good command of vocabulary and grammar, are the basics for success in all subjects - and, most importantly, essential for success in 21st Century careers.

4. **High expectations for student learning and positive behaviour at all times:** no tolerance of disruptive or poor behaviour. The school's high expectations for learning embrace all students. This involves our students:

- **coming to school on time**
- **being prepared for learning with all equipment**
- **in correct school uniform and**
- **demonstrating considerate and positive behaviour at all times**

**It is well known in our community that Maitland High School does not tolerate disruptive or poor behaviour from its students.** The school has highly-effective student wellbeing and discipline systems in place to ensure that the learning needs of all students are met with care and fairness. Support and extension are provided based on each student's unique learning needs.



**Our student behaviour expectations are simple and transparent:**

- 1. All students have the right to learn in settled and productive classrooms.**
- 2. All students are valued, equal and unique and are supported to set high personal learning goals for a positive future.**
- 3. All students have a right to be free from anti-social, aggressive or threatening behaviour in the playground.**

All students at MHS are aware that transgressing these basic rights of fellow students is not tolerated and our response to transgressions is swift and thorough, based on the fair and transparent application of: The Behaviour Code for Students; Student Discipline in Government Schools; Suspension and Expulsion of School Students DoE policies and procedures.

**Does MHS have a strong and effective student wellbeing focus? YES!**

Our school has a highly effective Wellbeing network of year advisers, head teachers, school counsellor, student support officer and learning and support teachers. All students with additional learning needs have Individual Learning Plans and every one of our students has access to our Wellbeing supports and they are encouraged to seek our assistance whenever an issue arises which impacts on them.

In particular, our school does not tolerate any kind of bullying behaviour or harassment. At our school, the culture is that students feel able to seek help from their year adviser, deputy or principal and any incidences of anti-social behaviour are acted on swiftly so that the negative behaviour is stopped.

**What sort of additional or special programs does the school run?**

We have:

- An **outstanding Information Technology Program** where our students are coding and learning industry-standard applications and software use.
- A **Talented Sports Program** which provides individual training and mentoring to gifted young sports-people across a wide range of sports. Our Basketball, Netball, and Rugby League teams are frequently in the Top 8 in the state and we have a State Development Squad-level Cricket coach on staff!
- An **exceptional Creative and Performing Arts Program**, where Drama, Dance, Music and Visual Arts are nurtured by enthusiastic and talented teachers!

Public Education and our school in particular, aims to build a healthy and harmonious community of learners. Issues of class, race, gender and all other forms of exclusion, are eliminated through diversity, understanding and inclusion, whilst actively teaching that belonging, community, learning and achievement are for all.

**Welcome to our school!**  
**En Avant!**

# Who's Who?

Ms Paula  
Graham



**Principal**

Mrs Belinda  
James-Cliff



**Deputy  
Principal  
Yrs 8 & 12**

Ms Melissa  
Schatz



**Deputy  
Principal  
Yrs 7 & 11**

Ms Brittany  
Benton



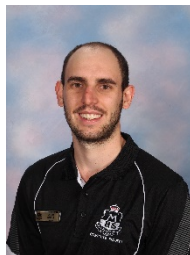
**Deputy  
Principal  
Yr 9**

Mr John  
Lawson



**Deputy  
Principal  
Yr 10**

Mr Josh  
Noble



**Year 7  
Adviser**

Mr James  
Keith



**Year 8  
Adviser**

Mrs  
Melanie  
Goward



**Year 9  
Adviser**

Mr Robert  
Eaton



**Year 10  
Adviser**

Mr Dane  
Hockley



**Year 11  
Adviser**

Mr Nick  
Bower



**Year 12  
Adviser**

Ms Toni  
Williams



**Learning and  
Support**

Mrs Leanne  
Wilson



**Learning and  
Support**

Mrs Omra  
Wells



**PLC**



Mr John  
Norberry



**HT English**

Mr Andrew  
McKay



**HT Maths**

Mr Scott  
Parrey



**HT Science**

Mrs Michelle  
Matthews



**HT HSIE**

Mrs Donna  
Howarth



**HT TAS**

Ms Yvonne  
Ryan



**HT CAPA**

Mrs Donna  
Chapman-  
Hardy



**HT Admin**

Ms Stephanie  
Primrose



**HT PDHPE**

Ms Jayne  
Cameron



**HT Support  
Unit**

Mrs Sarah  
Gambrill



**HT Wellbeing**

Mr Robert  
Eaton



**HT Wellbeing**

Ms  
Genevieve  
Henry  
**HT  
Learning  
Support**



Ms Amanda  
Morgan



**Student  
Support  
Officer**

Ms Chantal  
Tanna



**Aboriginal  
Education  
Officer**

Mrs Lynne  
Glascott



**Library  
Support &  
First Aid**

## Getting Involved – Join our P&C

We have an active P&C group that supports the school in a number of important ways. They are always looking for new faces and new ideas, so there are several ways to get involved.

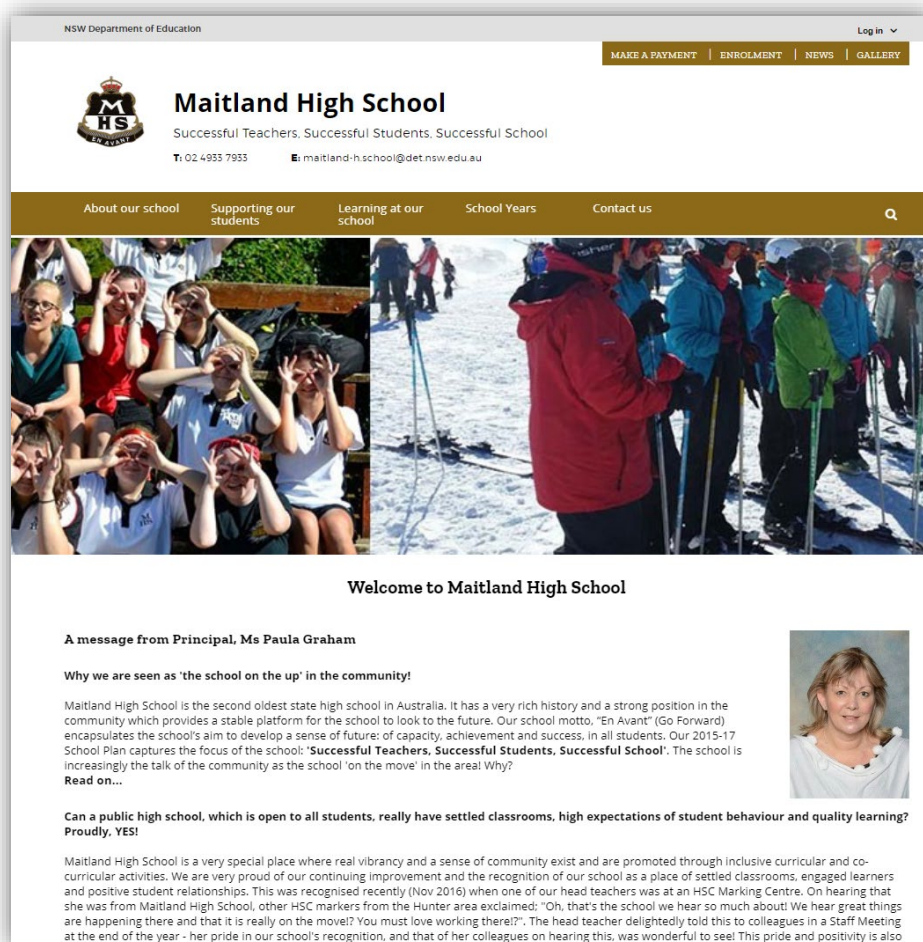
**P&C Meetings** are held on the first Wednesday of each month. They start at 6pm in the Staff Common Room, above the main entrance to the school. Principal Paula Graham and the P&C discuss a variety of issues that concern students, parents, school staff and the community. Come along to our next meeting, Wednesday 6 November.

**The school canteen** is run by a P&C team, and we are always looking for new volunteers. We would love to have you come and join the team for a few hours a month!

**Fundraising** is another way our P&C supports the school. A number of key installations were made possible by the generous help of the P&C: our beautiful shade-sails, our electronic sign, and the air-conditioning in the library. Come and get involved!

## Check out our Maitland High School Website

Go to **[www.maitlandhigh.com.au](http://www.maitlandhigh.com.au)** and take a look at our school website. There is plenty of relevant curriculum and school organisation information here, links to helpful sites, and photographs of our students learning, playing sport, competing and performing!





## Download our Skoolbag App



One of the most popular ways to stay informed is to download our Skoolbag App.

<http://www.skoolbag.com.au/parentinstructions.pdf>

Just go to the App Store, Google Play Store, or to the website – and find our Maitland High School App.

We use the app to send out alerts and reminders to students, parents and carers, so that you will always have the information you need. You can also make a payment via the app, or on our website.

Once you download the app, **make sure you set up your profile so you only receive the reminders you need. You'll find your new Year 7 group ready for you.**

## Like us on facebook

While you are unable to have a facebook account until you are 13 years old, you might like to start following our Official School facebook page with your parents to see the sorts of events and activities you can look forward to when you come to high school!

You'll find us at <https://www.facebook.com/maitlandhigh/>



# Respect

- Follow all instructions
- Care for people and property
- Be polite



# Safety

- Right place, right time
- Right uniform
- Right behaviour – think first

# Personal Best

- In class, on task
- Be prepared
- Challenge yourself



MAITLANDhighschool

## PBL Classroom Expectations



- ✓ Phone is off and in bag
- ✓ Follow all instructions
- ✓ Be Polite
- ✓ Begin class quietly and sensibly
- ✓ Be prepared
- ✓ Challenge yourself





## Zeros Aren't Permitted

means:

Correct books & equipment every lesson

All work is completed with care and pride

Correct spelling and punctuation matter

Please ask and ask again if you don't understand

Trying triumphs, persistence wins

Individual goals are critical to achievement

Disruption in class is not tolerated

Antisocial or bullying behaviour is not tolerated

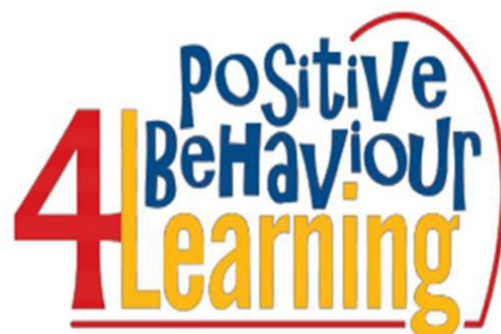
Everyone has a right to learn in a safe and settled  
environment;

no-one has the right to take that away.



**At Maitland High School, students are expected to:**

- ✓ Follow school and class rules and follow the directions of their teachers
- ✓ Strive for the highest standards in learning
- ✓ Respect all members of the school community and show courtesy to all students, teachers and community members
- ✓ Resolve conflict respectfully, calmly and fairly
- ✓ Comply with the school's uniform policy or dress code
- ✓ Attend school every day (unless legally excused)
- ✓ Respect all property
- ✓ Not be violent or bring weapons, illegal drugs, alcohol or tobacco into our school
- ✓ Not bully, harass, intimidate or discriminate against anyone in our school



**Students demonstrate this by:**

- **Attending all classes and arriving to class on time**
- **Turning phone off and putting it away before entering the classroom**
- **Coming to class prepared with equipment and the intention to engage in learning**
- **Following directions without arguing with the teacher**
- **Focusing on work at all times, without talking and disrupting the class**
- **Always making the best effort to learn: persisting, trying hard, remaining focused and asking for help when required**
- **Demonstrating politeness and respect to all: other students and school staff**
- **Never threatening, verbally abusing, harassing, teasing or hitting another person**

**Consequences of infringing Student Behaviour Expectations**

<b>Classroom teacher level Actions</b> (Disruption)	<b>Head teacher level Actions</b> (Repeated misbehaviour and disruption)	<b>Deputy or Principal level Actions</b> (Persistent misbehaviour and disruption)
Move seats	Lunch detention	Behaviour monitoring
Lunch detention	Parent / carer contacted	Formal Caution
Completion of work in own time	Deputy Direct - students on DP card	PLC placement
Parent / carer contacted	Email /phone parent /carer	No school representative sport
Show improvement and apologise	Senior Placement	No excursions
Phone handed in to Principal		Alternate education centre
Behaviour referral		Suspension
Refer to Head Teacher		Expulsion
Deputy Direct - students on DP card		



## What is high school *really* like at MHS?

We have wonderful students here!

### Question: What are your concerns or fears?

- I might be in a class with none of my friends.
- Harassment by other kids.
- I won't know anyone or make new friends
- I worry that people will tease me
- That the work will be too hard.
- Getting lost and going into the wrong room.
- Getting bullied.



These are understandable worries when young people are coming to a new school for the first time, however, at MHS, the culture is that:

**Students feel comfortable to let a teacher, year adviser, deputy principal or the principal know if someone or something is causing them concern.**

**The school has a proud reputation for acting promptly and successfully to resolve issues and Ms Graham is very firm that she NEVER tolerates bullying behaviour or disruptiveness in class!**

Quite simply, if we know about it, we can resolve the problem, prevent its recurrence and ensure our young people feel happy and supported.

If something is worrying you, tell a teacher, year adviser, deputy principal or the principal and tell your parents/carers. The school makes student wellbeing a priority and effective action ensures our school remains a safe, happy and caring learning environment where the focus is on learning and success.

Parents /carers, if you are wondering if you should call because something isn't right, the answer is always, 'Yes'. It is easier to solve problems while they are small, than it is to allow the problem to grow or cause stress for your child. The principal, deputy principals, and year advisers are always available to help.





## Rewards Snow Camp for Year 10 & 'Pink Day'!







**Our Year 7 ONLY Playground**



**Year 7 has more than a third of the school all to themselves  
at recess and lunch times!**



## Year 7 Camp

We get Year 7 off to an exciting start with a trip to Point Wolstoncroft.

This 3-day camp helps you get to know other Year 7 students, and lets you participate in a great range of friendship-building activities.

Point Wolstoncroft is a NSW Sport & Recreation Camp and their experienced staff will lead you through fun and challenging activities like their high-ropes course, a range of water-based activities and group activities after dinner.

You'll find out more about camp from your Year Adviser.







Year 7 & 8 Talented Sports Program and  
Dance Ensembles









## The General Contribution

This payment allows the school to purchase consumable materials such as stationery, first-aid/hygiene requirements, printing materials, additional learning aids, sports equipment and additional Library resources. Whilst not compulsory, the General Contribution allows for the purchase of improved educational resources. It is requested that you make this contribution on behalf of your student(s).

Parents in financial difficulty are asked to write to the Principal if they wish to seek a reduction of the general contribution. The school does not receive any funds for this purpose.

## Non-Elective subject contributions

For the award of the RoSA, students must have completed study in Visual Art, Music, Physical Education & Technology. These subjects produce or use goods, which become the property of or are consumed by the student. Contributions are to meet these costs.

Parents/carers not able to meet commitments with elective contributions may apply to the Principal for direct financial assistance from the Student Assistance Scheme, a government-funded scheme.

## Payment

An early payment of the school contribution is appreciated. You may choose to pay contributions for the whole year, each semester or each term.

*Payment may also be made on our website, or over the phone through use of a credit card.*



## What do you need to bring to high school?

To be ready to start high school, you'll need a uniform, a school diary, some books and stationery and a school bag.

### Book packs

We will give you a list of everything you need to bring on the first day of school. You can collect all the items individually, or you can buy the items altogether as a pack.

Remember that having your name written on all your belongings means that you can keep track of everything.



### Computer

Our ICT (Information and Communications Technology) program is growing fast, and students and teachers benefit from using computers in classrooms. Bringing a laptop computer to school lets you store and complete your schoolwork in electronic form. You can connect to the Department of Education's network and access the internet from everywhere in the school. We have spare laptops that students can use when a teacher schedules a lesson of computer-based learning, but you might be more familiar with your own. Please note that tablets and phones are not useful in a high school BYOD program. Later in this booklet, you'll find our BYOD guidelines.



### School Bag

You might need a new bag for high school. You will probably be carrying more books than you needed in primary school, maybe even a laptop computer. A strong, sturdy bag will help you carry everything you need.

We don't have a nominated school bag; you can bring any bag that suits your needs. Make sure the bag is right for your body size, and it can be adjusted using buckles or straps. Your new school bag needs to be comfortable, and should spread the load across your shoulders, to help protect your spine.

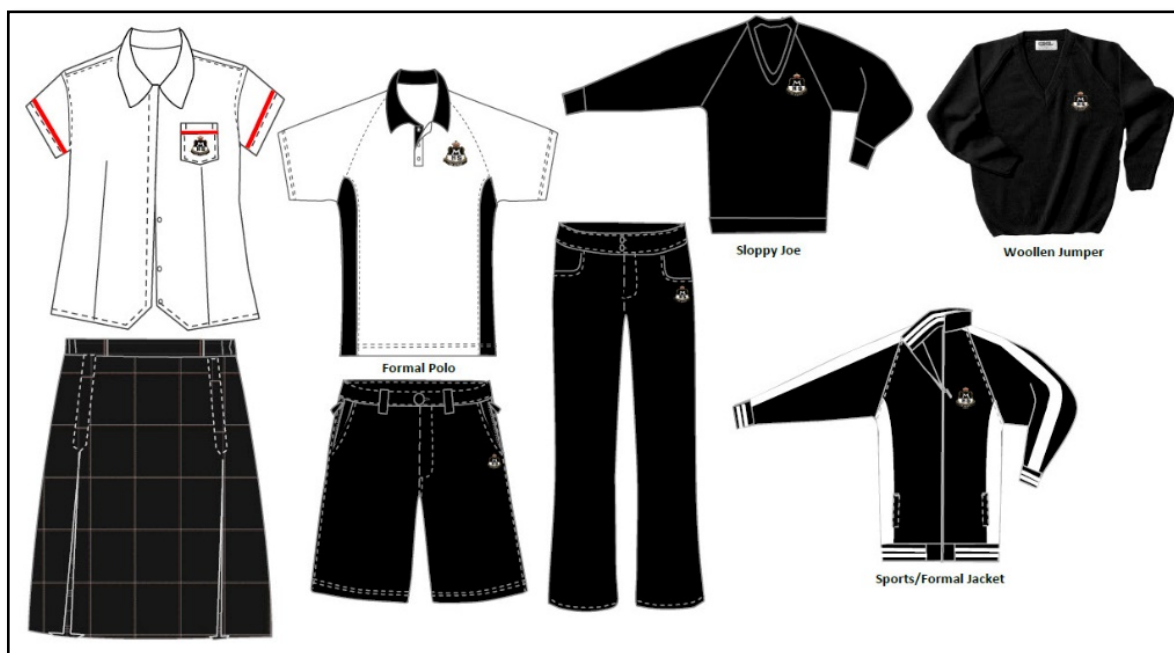


## Uniform

We are always receiving compliments about how smart our new uniform looks. Based around our school colours of black and white, with a touch of red, our uniforms keep students looking neat, and proud of the school they represent. There is no set summer or winter uniform; just dress for the weather.

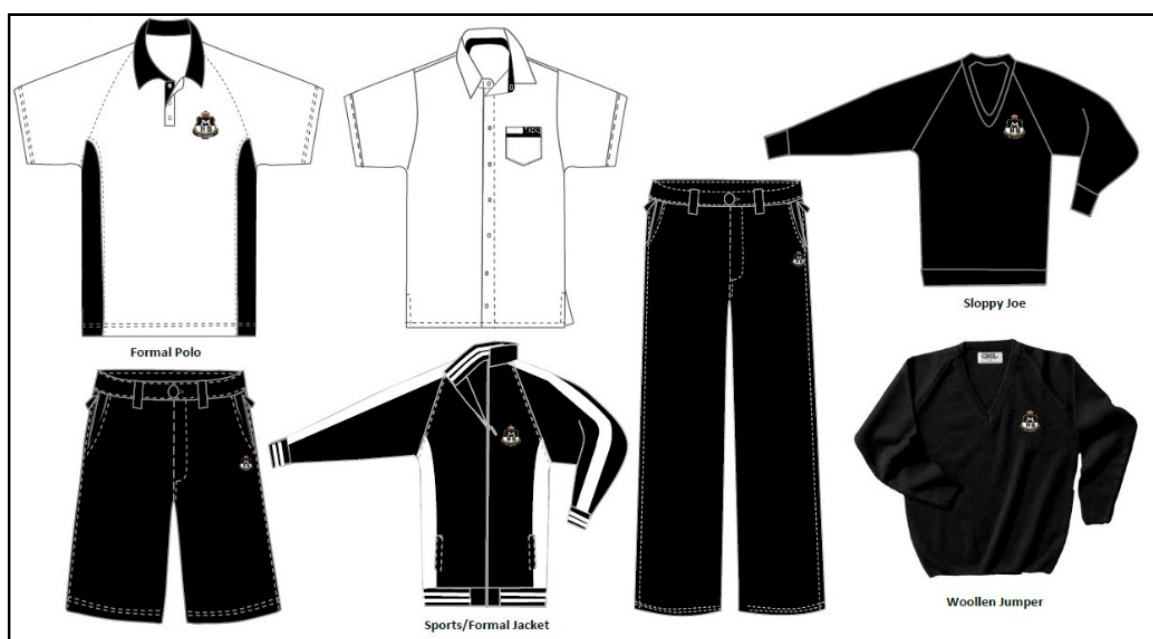
The next few pages will tell you everything you need to know about uniform, including what to wear and where to buy it.

Check out our website for larger images and more information.

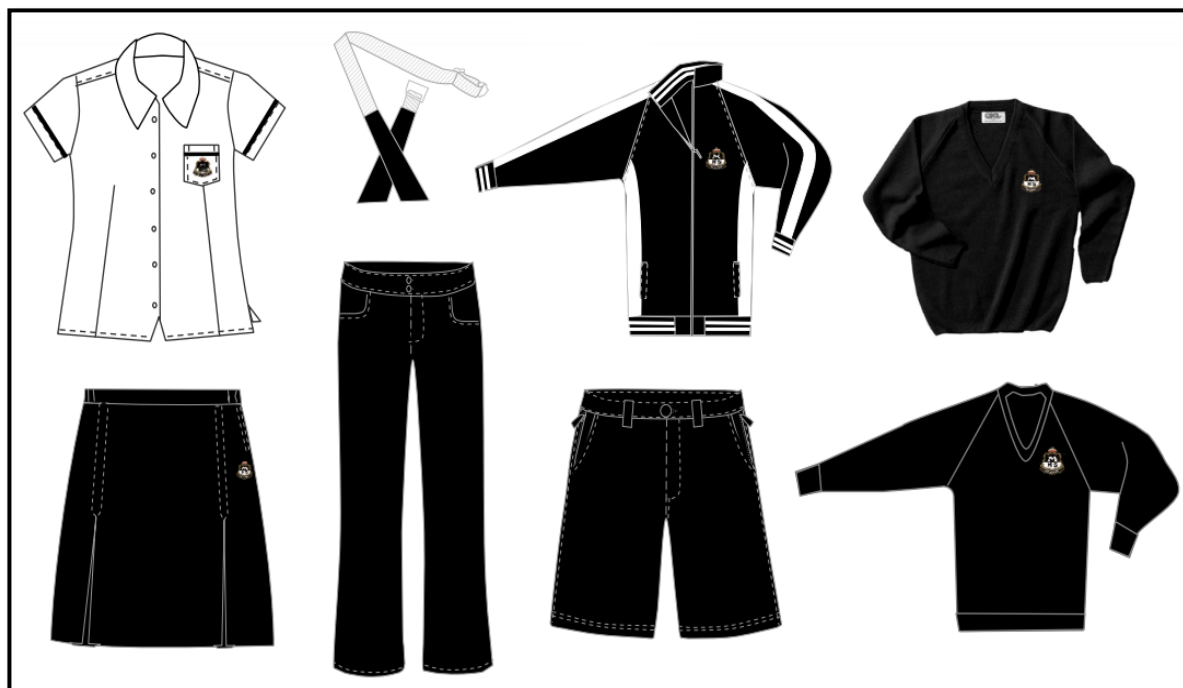


**Junior  
Girls'  
Uniform**

**Junior  
Boys'  
Uniform**



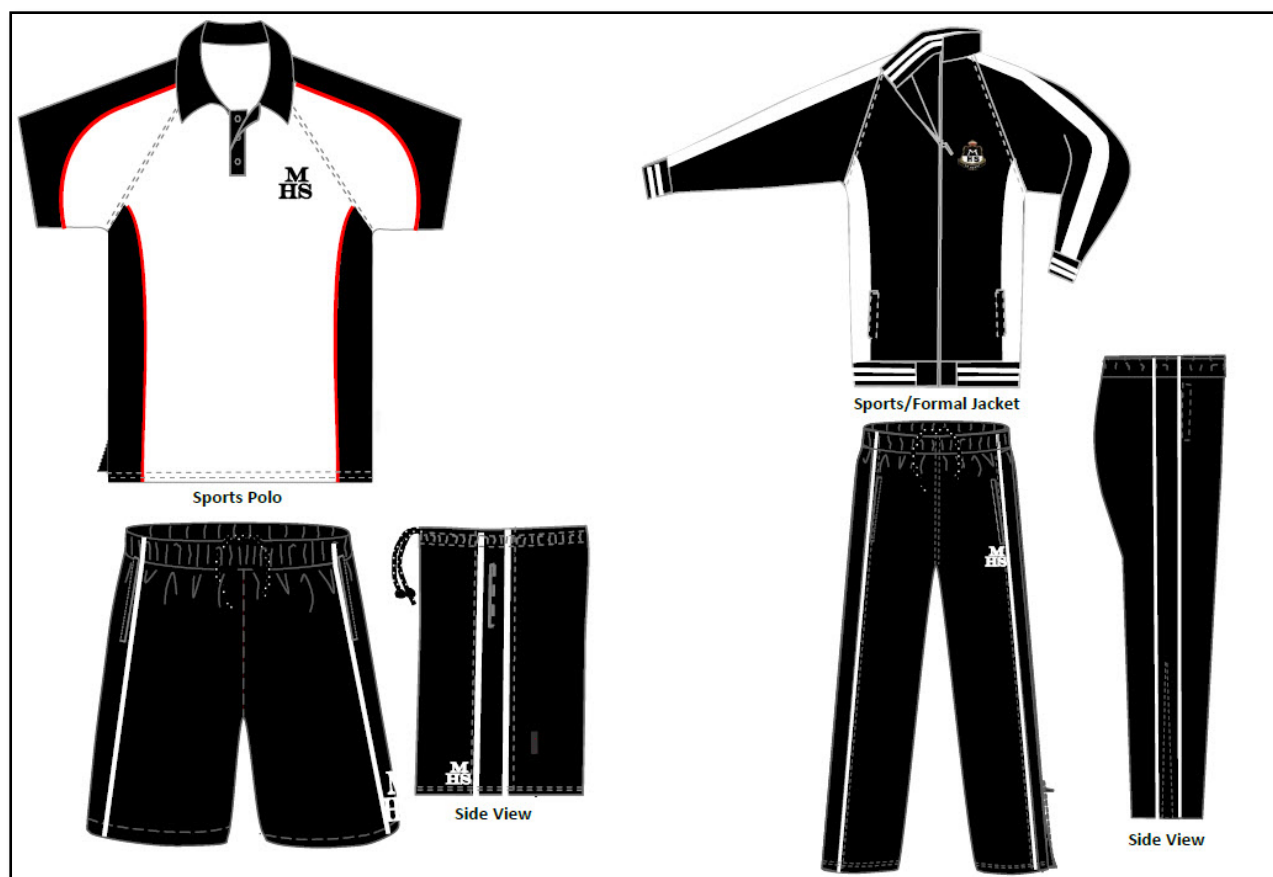
**Senior  
Boys'  
Uniform**



**Senior  
Girls'  
Uniform**



## Sports Uniform for both boys and girls:



## 2020 Uniform Pricelist

Girls Uniform: Yr7-Yr12	Size	Price	Size	Qty
Blouse - Yr7-Yr10	J8-L20	\$35.00		
Blouse - Yr11-Yr12	J10-L20	\$35.00		
Formal Polo - Yr7-Yr10	J10-L20	\$39.00		
Tartan Skirt	J10-L20	\$55.00		
Black Skirt	J10-L20	\$50.00		
Shorts	J8-L20	\$30.00		
Pants	J14-L20	\$35.00		
Boys Uniform: Yr7-Yr12	Size	Price	Size	Qty
SS Shirt - Yr7-Yr10	J8-3XL	\$35.00		
SS Shirt - Yr11-Yr12	J8-3XL	\$35.00		
Formal Polo - Yr7-Yr10	J8-3XL	\$39.00		
Formal Shorts	J8-3XL	\$42.00		
Formal Trousers	J10-3XL	\$47.00		
Outerwear	Size	Price	Size	Qty
Jumper	All Sizes	\$67.00		
Jumper Fleece	J10-3XL	\$39.50		

Sports Uniform	Size	Price	Size	Qty
Sports Polo	J8-3XL	\$39.00		
Sport Shorts - Sales Item	J10-3XL	\$30.00		
Sport Shorts Stretch MF	J8-3XL	\$36.00		
Jacket Super Fleece	J8-3XL	\$69.00		
Tracksuit Pants	J8-3XL	\$45.00		
Accessories	Size	Price	Size	Qty
Sports Cap		\$17.00		
Sport Sock Ankle White 2pk	All Sizes	\$11.95		
Crew Sock	All Sizes	\$6.25		
Microfibre Tights	All Sizes	\$9.50		
Gloves		\$7.75		
Scarf		\$10.80		
Leather Belt	All Sizes	\$15.75		
Tab Tie - Yr11-Yr12		\$16.00		
School Tie - Yr11-Yr12		\$22.50		
Fabric Marker		\$3.60		

# The Uniform Shop

0423 326 648

[maitlandhigh@alinta.com.au](mailto:maitlandhigh@alinta.com.au)

## Shop hours

**Mondays: 2-4pm**

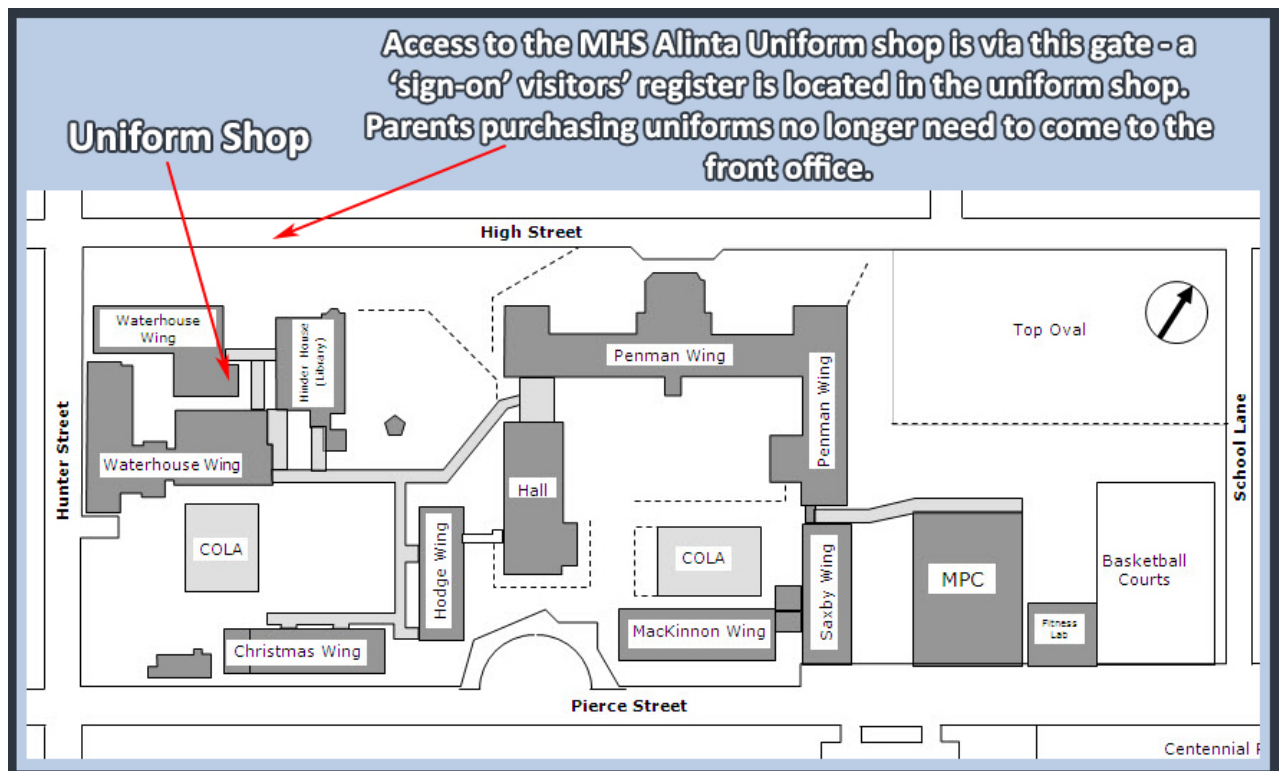
**Wednesdays: 8-10am**

**Fridays: 8-10am**

Uniform price list & online shopping available at:

[www.alintaapparel.com.au](http://www.alintaapparel.com.au)

## Where is the Uniform Shop?



*Successful Teachers, Successful Students, Successful School*



**Extract from current DoE policy** "It is mandatory that students carrying out practical activities using chemicals or equipment in schools wear enclosed leather footwear. Sandals, open footwear or high heeled shoes must not be worn in workshop areas or laboratories."

The shoes below ARE suitable and meet WHS (OH&S) requirements at Maitland High School because:

- they have leather uppers,
- there are NO punched holes or mesh,
- they are NOT canvas,
- they cover the upper part of the foot.

A student IS NOT allowed to participate in practical lesson if she/he is wearing footwear that does not meet WHS (OH&S) guidelines.



The styles shown below, and styles similar to these, **ARE NOT acceptable in practical lessons**. A practical lesson is any lesson where explicit safety rules apply. For example, woodwork, metalwork, food technology, hospitality, science etc. The styles shown below are not WHS (OH&S) compliant at Maitland High School.



**Please note:**  
Canvas 'VANS',  
'Converse' and other  
canvas shoes are **not**  
acceptable at MHS.

All notes should be written by parent or carer (not student) clearly showing student's name, year, date and must be signed by parent.

### **Late Arrivals – All students arriving after first bell at 9.05am**

Do not go directly to class; go to the office to get a late slip. Teachers need to check the late arrival slip before students are allowed into class.

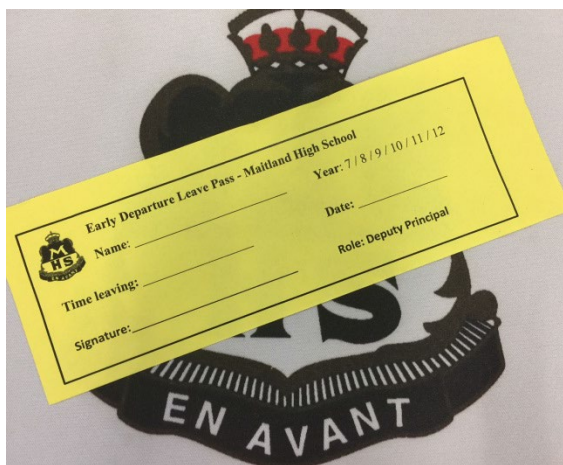
A parent/carers should accompany student or a note be handed in, explaining reason, when students arrive late.

If the late arrival is unexplained, an SMS will be sent to the parent/carers as a reminder request for a reason to be provided, as per legal requirements.

### **Early Departures**

Students are to hand in a note from their parent/carers to their Deputy Principal before Period 1. The note must explain why an early departure is required. Please include student name, date and time required, reason and parent signature.

The Deputy Principal will authorise the early departure by issuing a yellow Leave Pass slip, which the student MUST show their class teacher in order to leave their classroom and then give this Leave Pass to the Front Office before leaving the school. Students will then be marked off the school roll and permitted to exit the school.



**Students hand in Early Departure notes to their Deputy Principal before school and show to the Office staff when they are leaving to enable their sign out and exit from the school.**

If a student subsequently returns to school e.g after an appointment, they MUST present to the Front Office to be signed back in and be given a Late Pass to re-enter class.

Students need to see office staff to have foyer doors opened so they can meet their parent or carer.

If a parent needs to collect a student unexpectedly, they can ring the school office or call into the school and the students will be notified. Parents should not – ring or message students directly.

If possible, student collection at the end of a lesson is preferred.

The parent/carers will need to sign the student out at the school Front Office.

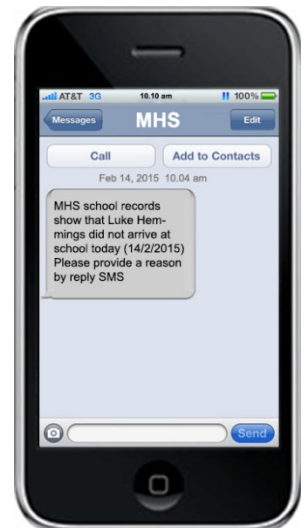


## Student absence

When a student is marked absent an SMS message will be sent to the parent/carer. The parent/carer can, if he/she wishes, reply with an SMS, note, phone call, Skoolbag absence, email or fax explanation. When replying via SMS, please remember to include the student's full name.

Example – the reply might be, "Liam Hemmings 28 /4 /17 - sick"

For all other written methods, please include student name, date, reason and parent signature.



## Mobile Phones at school

Students at MHS are allowed to bring mobile phones to school, however, they may only be turned on and used before and after school and during lunch and recess breaks. **Before students enter the school buildings, mobile phones are turned off and are put away in bags – not in pockets!** Misuse of mobile phones in class is uncommon at MHS.

Any student who infringes the Mobile Phone Procedures at Maitland High School is directed to take his/her phone to the Principal and it is collected by the student at the end of the day. Persistent misuse of mobile phones during class time is rare, however, if such an instance were to occur, parents/carers will be contacted and the mobile phone is banned from school until responsible use can be guaranteed.

**The safe keeping of mobile phones is the responsibility of owners. Students are advised not to leave their phones or other valuables in bags unattended.** While the school will endeavour to locate lost or stolen phones, it accepts no responsibility for their safe keeping or replacement.

### In class



Turn off phones and mobile devices before entering class



### Recess and lunch



**All students, years 7 to 12, are allowed to participate in BYOD** (Bring Your Own Device), pending the sign-off and **return of the MHS BYOD Usage Agreement**. Information pertaining to BYOD at MHS will be posted on the school website. Initially, the most important aspect for those wishing to participate, is the device specifications which will be acceptable to the school.



### **Suggested Device Specifications:**

- A wireless internet connection
- A USB port (for a flash drive)
- The ability to accommodate office applications (such programs could be but are not restricted to Microsoft Office, Google Docs, open office etc)
- Support a keyboard (must be portable)
- Have a minimum storage capacity of 16Gb
- Battery life of at least 6-8 hours
- It is preferred that the device does not come with 3G capability as the school Wi-Fi network filters unwanted, potentially dangerous content. 3G access will be banned at MHS.
- Up to the value of \$550 (suggested maximum)
- Screen size must be no smaller than 10", recommended because less than this is difficult to view.
- This policy includes, but is not limited to, personal mobile devices such as laptops, iPads, Android and Windows tablets. Smart Phones will not be considered as BYOD devices, however, under teacher direction only they may be used as class resources.
- Devices are not to be shared.
- Devices will not be physically networked. Content will only be accessed through the school's Wi-Fi and will be subject to monitoring and filtering. The school may block student access to the Internet.
- Printing of documents from student-owned devices can be done using a USB device.
- Minimum operating system = Windows 7 or OSX 10.9 for Apple machines. Please note that Android tablets and Apple iPads are presently limited in their connection possibilities to our Wi-Fi.



**Lockers are available at MHS:**

These lockers are free for Year 7. Students in other years pay \$10 annual hire fee plus \$10 deposit on the lock.



# Bell times



Monday & Tuesday			Wednesday			Thursday & Friday	
Period	Start/Finish		Period	Start/Finish		Period	Start/Finish
1	9.05 10.10		1	9.05 10.05		1	9.05 10.10
2	10.10 11.10		Assembly	10.05 10.30		2	10.10 11.10
Break 1	11.10 11.30		Break 1	10.30 10.50		Break 1	11.10 11.30
Break 2	11.30 11.50		2	10.50 11.45		Break 2	11.30 11.50
3	11.50 12.50		3	11.45 12.40		3	11.50 12.50
4	12.50 1.50		Break 2	12.40 1.00		4	12.50 1.50
Break 3	1.50 2.10		Break 3	1.00 1.20		Break 3	1.50 2.10
5	2.10 3.10		4	1.20 2.15		5	2.10 3.10
Home	3.10		5	2.15 3.10		Home	3.10
			Home	3.10			

*Optional 'Homework Hub' in our Library 3.10-3.30 with rotating subject teachers.*



## Bus Timetable Information

For current timetable information, you can phone Hunter Valley Buses, Thornton depot, on 4935 7200.

Timetables are available online at

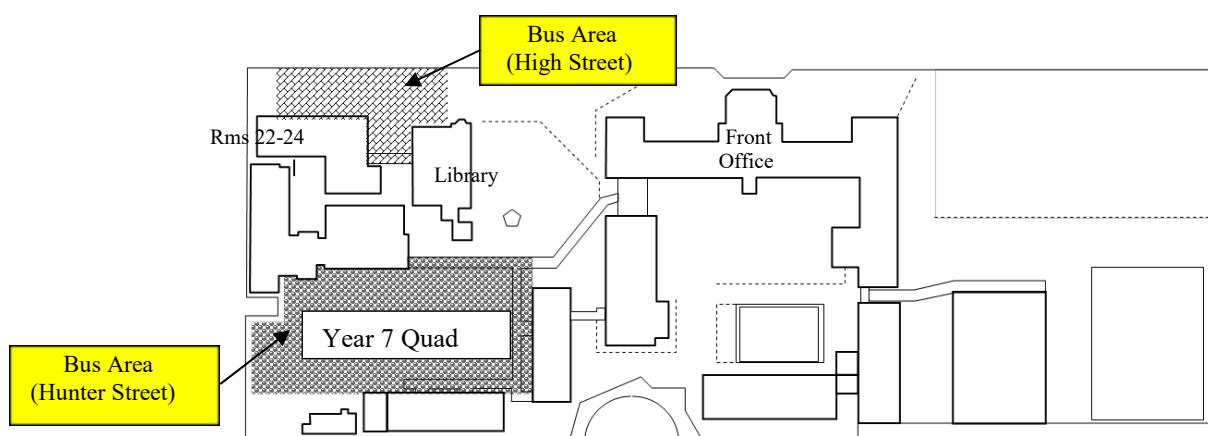
[www.cdcbus.com.au/school/hunter-valley-buses-school-timetables](http://www.cdcbus.com.au/school/hunter-valley-buses-school-timetables)



Following the final bell at 3.10pm, students are free to go home, or may visit our Homework Hub, held in our Library building: Hinder House. Operating from 3.10-3.30 daily, this homework centre will be staffed by teachers from different faculties on a rotation.

Students who catch buses are supervised in a reduced Area 1 (Hunter Street buses) and in the area outside Rooms 22 to 24 (High Street buses).

#### *School bus pick-up areas*



#### **School buses:**

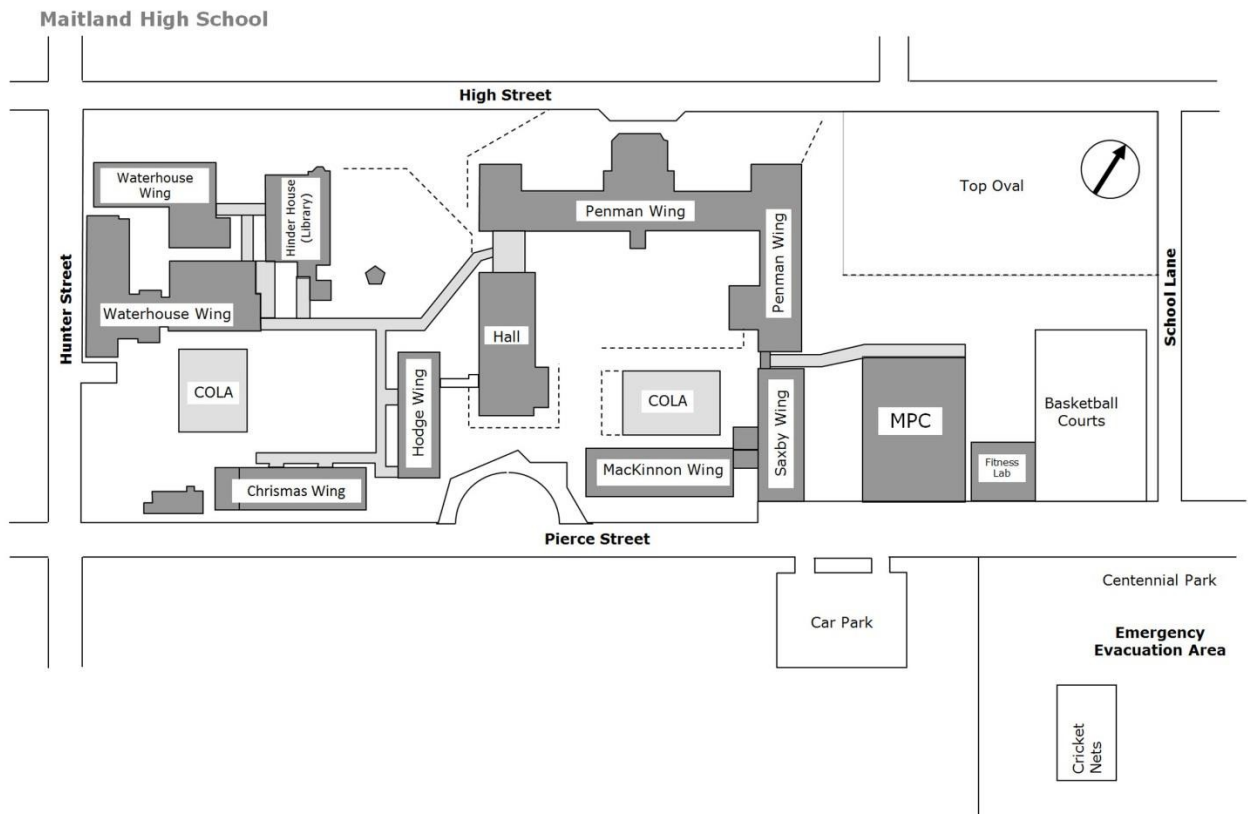
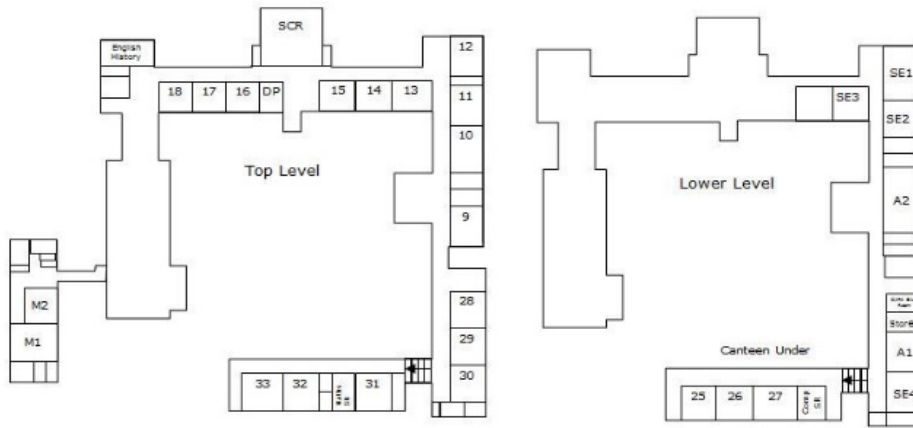
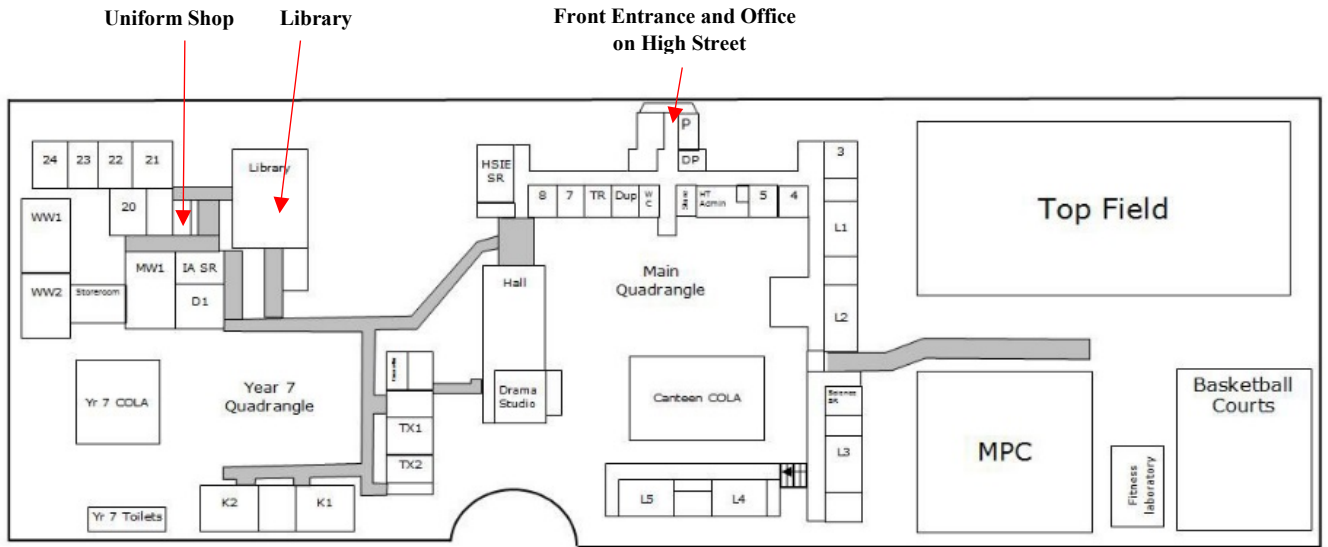
For accurate and up to date information relating to school buses please follow the link below (this link is available on the school web site under STUDENT SERVICES/Transport – Buses and Trains).

<http://www.cdcbus.com.au/Hunter-Valley-School-Timetables.html>

#### **What do I do if I miss my bus?**

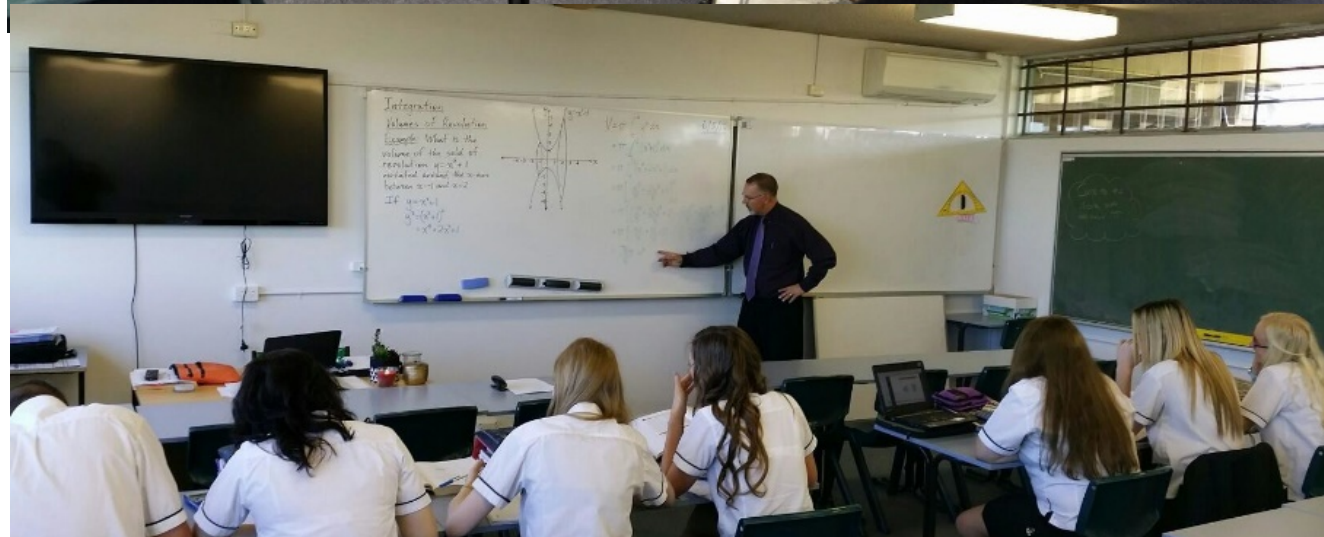
If your child misses his/her bus home, tell them not to worry and to go up to the Front Office and report to the Principal or Deputy Principals who can contact you and provide supervision until you are able to collect your child.







**Congratulations to a selection of our high academic achievers!**







**Welcome to the second-oldest high school in Australia!**