

MAITLANDhighschool

Proud of our past, enthusiastic about our future



MHS Senior Prospectus

An information booklet for students beginning
Year 11 in 2020



Education
Public Schools

QR Codes

A QR code is a machine-readable code consisting of an array of black and white squares. They can be read on any smartphone or tablet and store all sorts of information.

Download a QR reader (free) onto your smartphone and find out what information they contain.

Throughout the booklet you will find some QR codes for several different subject areas.

This QR code contains our new school website.



Disclaimer:

Every endeavour has been made to ensure that all the information contained in this booklet is current and accurate at the time of printing. Students and parents will be advised of any later amendments.

Principal's Message

Welcome to senior school!

The transition from Year 10 to the senior school is a pivotal point in your planning for a successful future as an adult. 'Successful Futures', the fourth line in our mission statement, means something different to everyone, however, the common element of a successful future is having choices in life –and this, importantly, is the basis of a sense of wellbeing and fulfilment. Your commitment to your studies over the next two years is what will create your ability to make choices about your future: what kind of employment you will have; what you will study; where you can go; where you will live; what you can own, do and explore in your leisure time – in short, how you live your life. Today's Year 10 students will quite possibly have several careers over their working lives, including job descriptions that may not even exist yet.

Years 11 and 12 are an exciting time where you get to design your education and preparation for adulthood in a unique pattern of study which reflects your interests and strengths. From your study in Years 7-10, you will have an idea of the types of strengths you have and you now need to think about what skills you wish to develop as you move closer to your career goals.

An important note to parents and carers

Equipping students for 21st Century careers means we focus most importantly on the *skills* to be obtained in each course, not just the content. Learning how to learn, i.e. to apply knowledge and to problem-solve in new situations is paramount. Communication, written, oral, visual and interpersonal; Critical Thinking; Collaboration and; Creativity are the skills and capacities required in your young person's future. A number of courses will enable the same skills development, with only few university courses having specific prerequisites. Please take very careful note of the advice given at the subject selection interview regarding the best course for your child to maximise his / her potential. Students achieve best when the course matches their level of capacity and interest.

Have a serious approach to study – you're designing your future!

You may have timetabled Study Periods in the library study centre – use them wisely. Year 11 can expect to commit to 2-2.5 hrs further study (aka homework!) a day to achieve their potential. The best results will come from a consistent approach to the work over a long period of time. All of the HSC courses will be hard work and will have assessment tasks so it is important that you be dedicated to your studies and that you are ready to put in maximum effort at all times. Build a future of choice and opportunity and be prepared for an exciting and challenging year! Enjoy your new studies and make the very most of your time in senior school!



Paula Graham

PRINCIPAL

Table of Contents

Principal's Message.....	3
Table of Contents.....	4
Getting Started: General Information	6
What type of course can I select?.....	7
Board Developed Courses (BDC).....	7
Content Endorsed Courses (CEC).....	7
Vocational Education and Training (VET) Courses.....	7
TAFE Delivered Courses.....	8
Life Skills Courses as part of a Special Program of Study	8
Subjects involving project work.....	8
Pathways.....	8
Choosing the right path for you.....	9
Types of HSC Courses	10
Which course type suits my needs?.....	11
Category A and B Courses.....	11
ATARs and the HSC.....	12
HSC: All My Own Work	13
What does Satisfactory Completion of a Course mean?	14
What does Satisfactory Attendance and Application mean?	14
Selection of Subjects.....	15
Board Developed Courses	16
ABORIGINAL STUDIES.....	17
ANCIENT HISTORY	18
BIOLOGY	19
BUSINESS STUDIES	20
CHEMISTRY.....	21
COMMUNITY and FAMILY STUDIES	22
DANCE.....	23
DRAMA	24
ENGLISH ADVANCED.....	25
ENGLISH EXTENSION	26
ENGLISH STANDARD	27
ENGLISH STUDIES.....	28
FOOD TECHNOLOGY	29
GEOGRAPHY.....	30
INDUSTRIAL TECHNOLOGY MULTIMEDIA.....	31
INDUSTRIAL TECHNOLOGY TIMBER.....	32
INFORMATION PROCESSES & TECHNOLOGY	33
INVESTIGATING SCIENCE	34

MATHEMATICS	35
MATHEMATICS - EXTENSION I	36
MATHEMATICS STANDARD	37
MODERN HISTORY	38
MUSIC	39
PDHPE	40
PHYSICS	41
SOFTWARE DESIGN and DEVELOPMENT	42
SOCIETY and CULTURE	43
VISUAL ARTS	44
Content Endorsed Courses	45
COMPUTER APPLICATIONS	46
EXPLORING EARLY CHILDHOOD	47
SPORT, LIFESTYLE and RECREATION	48
VISUAL DESIGN	49
WORK STUDIES	50
VET Courses	51
VET Curriculum Frameworks.....	51
2020 STAGE 6 COURSE DESCRIPTION – BUSINESS SERVICES	52
2020 STAGE 6 COURSE DESCRIPTION – CONSTRUCTION.....	54
2020 STAGE 6 COURSE DESCRIPTION – HOSPITALITY	56
2020 STAGE 6 COURSE DESCRIPTION – METAL AND ENGINEERING	58
2020 STAGE 6 COURSE DESCRIPTION – RETAIL SERVICES	60

Getting Started: General Information

The Higher School Certificate recognises 13 years of schooling. In the interests of greater career choices and increased opportunities at university and TAFE, it offers you a full range of study areas matching individual abilities, interests and goals.

The Structure of the HSC

If you wish to be awarded the HSC, the following rules of study apply:

- English is **compulsory** in both Year 11 and Year 12
- Students must accumulate at least 22 units:
 - 12 Year 11 units
 - 10 HSC units
- Courses must cover a minimum of 4 subject areas.
- You cannot select more than 3 Science subjects.
- At least 6 units from Board Developed Courses (BDC), including at least 2 units of a BDC in English must be included.
- At least three courses of 2 units value or greater
- Only one Category B Course can be counted for an ATAR (including English Studies, Mathematics Standard 1, any VET Course)

What are units?

All courses for the HSC have a unit value.

- Nearly all courses are 2 units.
- Each unit involves class time of approximately 60 hours per year, hence a 2 unit course takes 120 hours to complete.
- In the HSC each unit has a value of 50 marks, so 2 units = 100 marks.
- English and Mathematics offer an extension unit in addition to the 2 unit course.

What is an ATAR?

ATAR is the “Australian Tertiary Admission Rank”. It is used by universities to determine who gets entry to various courses. The University Admissions Centre (UAC) uses your HSC results to determine your ATAR. There is variation in the scaling that different subjects receive in determining your ATAR. This is determined by the results each year so previous years’ scaling may not be accurate. The advice of NESA and Maitland High School remains that students select subjects they like and are interested in.

What type of course can I select?

Board Developed Courses (BDC)

Board Developed Courses are developed by NESA. There is a syllabus for each course each of which contains:

- the course objectives, structure, content and outcomes;
- specific course requirements;
- assessment requirements;
- sample examination papers and marking guidelines;
- the performance scale (except for Vocational Education and Training Courses (VET)).

All students entered for the HSC who are studying these courses follow these syllabuses.

These courses are examined externally at the end of the HSC course and can count towards the calculation of the ATAR.

Content Endorsed Courses (CEC)

Content Endorsed Courses have syllabuses endorsed by NESA to cater for areas of special interest not covered in the Board Developed Courses.

There are five Content Endorsed Courses offered at Maitland HS:

- Computer Applications
- Exploring Early Childhood
- Sport, Lifestyle and Recreation
- Visual Design
- Work Studies

There is no external examination for any Content Endorsed Courses. Assessment is completely school based.

CECs count towards the Higher School Certificate and appear on your Record of School Achievement. Content Endorsed Courses do not count in the calculation of the ATAR.

Vocational Education and Training (VET) Courses

VET courses enable students to study courses that are relevant to industry needs and have clear links to post-school training and employment destinations.

These courses allow students to gain both HSC qualifications and accreditation with industry and the workplace as part of the Australian Qualifications Framework (AQF). The national framework is recognised across Australia and helps students to move easily between the various education and training sectors and employment.

These courses each have a specific workplace component and **a minimum number of hours students spend in the workplace**. To use VET courses towards an ATAR, you must sit the final HSC examination for that subject. Only one VET course can count towards an ATAR. Students receive a certificate showing the competencies gained.

TAFE Delivered Courses

TAFE courses are delivered at TAFE colleges, rather than by industry accredited school teachers. In many cases these courses provide advanced standing in TAFE courses undertaken after Year 12.

A TAFE course may mean that a student has to take time out of school or attend TAFE after school and/or at night. Students should be aware of these factors. Specific details of times etc. may not be immediately available, so students and the school have to be flexible about our involvement until numbers are determined.

Students undertaking TAFE courses do so under TAFE guidelines. All TAFE courses count towards the HSC.

Students undertaking a TAFE course in 2020 will have the 2 units for this course on top of the minimum, i.e. they will begin Year 11 with 14 units, 12 units will be school based.

Life Skills Courses as part of a Special Program of Study

Stage 6 (Year 11 and 12) Life Skills courses are available for students following a Special Program of Study for the HSC.

The school will make decisions about whether to enrol individual students in Stage 6 Life Skills courses in the context of an individual transition-planning process that is completed for both Year 11 and Year 12. This process will include Learning Support Team Meetings involving the student, parents or carers and the school.

Life Skills courses have Board Developed status and can be used along with other Board Developed courses to meet requirements for the award of the HSC. Each Life Skills course comprises a 2 Unit Year 11 course and a 2 Unit HSC course. There will not be an external examination for Life Skills courses.

Subjects involving project work

A number of subjects include a mandatory requirement for the development of project work for either internal or external assessment. This includes but is not limited to Visual Arts, Drama, Design and Technology, Society and Culture, Community and Family Studies, Industrial Technology (Metals and Engineering, Multimedia Industries, Timber Products and Electronic Industries), Modern History, Ancient History, Geography and some Science courses.

Projects developed for assessment in one subject **are not to be used** either in full or in part for assessment in any other subject.

Pathways

It may be possible for students to accumulate their HSC over a period of no more than five (5) years. Anyone interested in this idea **MUST** seek advice first from your principal, deputy principal, curriculum coordinator or the Head Teacher of Senior Studies.

Choosing the right path for you

In Year 10, students are asked to select subjects for Years 11 and 12. Here is a guide to help you choose well.

Choose subjects which emphasize your strengths and interests.

Keep the following points in mind when choosing your subjects:

- Your abilities - choose subjects where you are capable of doing well.
- Interests/Motivation- choose subjects that interest you.
- Career aspirations and needs - keep in mind future career paths but be realistic about choices.
- Syllabus Requirements – be mindful of how many practical works and major works are required for your pattern of study and the timing of submission.
- Other commitments - when choosing subjects, it is important to balance study with outside commitments and influences such as work, sport and family.

Who can help make decisions?

Our teaching staff can help students to see the wider picture of career planning, and understand that this next stage is really a launching pad, not a 'live or die' moment. With this approach, parents' support, and having frank conversations with their teachers and year adviser/careers adviser, students are unlikely to throw in the towel, or just 'do what their mates are doing'. The school's career adviser can also discuss different career pathways— whether students hope to pursue an apprenticeship or traineeship, or want to go on to study at university, TAFE or other registered training providers.

The key focus is on *skills* development

In the 21st century employment landscape, the *skills* to problem-solve, create and communicate are *most* important: i.e. developing successful learning strategies; problem-solving; interpreting; designing; creating; analysis; research; writing, communication and; ICT skills. The content or subject matter is simply the vehicle you use to develop and demonstrate your skills, so focus on the *skills* each course will enable you to develop, not just the content or subject matter. For example, you will find that a number of courses will enable you to develop similar writing, communication and research skills and only the subject or the information content of the course is different. This is an important thing to bear in mind if you find two subjects that you want to do are on the same line. If this happens, don't worry unduly, just look for another course which has a similar skills base.

The Higher School Certificate is the culmination of a student's school career. It is the highest educational award that can be achieved at secondary school in New South Wales: it reports student achievement in terms of a standard achieved in individual courses and; presents a profile of student achievement across a broad range of subjects.

Types of HSC Courses

There are two types of HSC courses, Board Developed and Content Endorsed. This table helps you determine which type suits your needs.

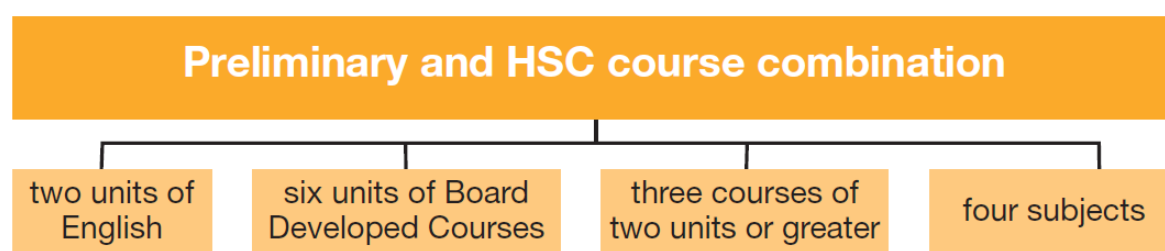
Board Developed Courses	Content Endorsed Courses
HSC examination except for: <ul style="list-style-type: none"> optional examination in English Studies and Mathematics Standard 1 and VET Framework courses All Life Skills courses 	No HSC Examination – school-based assessment only.
May be included in the calculation of a student's Australian Tertiary Admission Rank (ATAR)	Not included in the calculation of a student's Australian Tertiary Admission Rank (ATAR)
Includes some Vocational Education and Training (VET) courses.	Includes some Vocational Education and Training (VET) courses.
Includes Life Skills courses	

Board Developed Courses are developed by NESA and all students in the state study the same course content and complete the same HSC examination. These courses may contribute to the calculation of a student's ATAR. Life Skills Courses do not have an examination and are not included in the calculation of an ATAR.

Content Endorsed Courses have syllabuses endorsed by NESA to cater for a wide candidature in areas of specific need not served by Board Developed Courses. These courses may offer an alternative career path for students.

Mandatory Pattern of study for a HSC

An eligible subject selection for both the HSC and ATAR must include the required number of units of mandatory Board Developed Courses (most are worth two units each) and the following combination in both Year 11 and 12:



- English is mandatory for the HSC.
- English Studies and Mathematics Standard 1 are Board Developed Courses with an optional HSC examination.
- Extension courses are not separate subjects. E.g. Advanced English (2 units) + Extension 1 (1 unit) + Extension 2 (1 unit) = 4 units but only 1 subject
- At most, 6 units of courses in Science can be included in the pattern of study for Year 11. However, from 2019 Year 12, this increases to 7 units of Science, to allow for the study of Science Extension.

Which course type suits my needs?

If you *do not* want to go to university and *do not* need an ATAR:

To achieve a HSC, you will need to complete at least 12 units in Year 11 and at least 10 units in Year 12. If you don't want to go to university and therefore want a HSC only, you will be **able to select a mix of subjects from the two types of courses** – Board Developed, and Content Endorsed and/or VET Industry Framework courses.

If you are considering university and *do* need an ATAR:

If you think you *might* want to go to university, you need to ensure that you choose **at least 10 units of eligible Board Developed Courses** to obtain an Australian Tertiary Admission Rank (ATAR). While both Board Developed, and Board Endorsed and/or VET Industry Framework courses count toward the HSC, only Board Developed Courses (and only 2 units from a Category B course for which you sit an optional exam) are considered by the University Admissions Centre (UAC) when calculating your ATAR.

For further information about the ATAR use this link: <http://www.uac.edu.au/>

Category A and B Courses

ATAR courses are those developed by NESA for which there are formal examinations that yield graded assessments. These courses contribute to your ATAR and are classified as either Category A or Category B courses. Not all of the many HSC courses will contribute to an ATAR.

Category A Courses	Category B Courses
May be included in the calculation of a student's Australian Tertiary Admission Rank (ATAR)	No more than 2 units of category B courses can be included in the calculation of a student's Australian Tertiary Admission Rank (ATAR)
Compulsory HSC Examination for most courses	Optional HSC Examination for some courses
	Includes VET Curriculum Framework courses and have compulsory work placement.

It is the responsibility of the Universities Admission Centre (UAC) to determine if a course can be included in the calculation of the ATAR.

Category A Courses have academic rigour and depth of knowledge to provide background for tertiary studies. Examples include Biology and Geography.

Category B Courses - no more than two units of Category B courses can be included in the ATAR calculation. Examples include English Studies and Hospitality (VET).

Course category listings are available at the UAC Website:

<https://www.uac.edu.au/assets/documents/hsc-courses/2020-HSC-courses.pdf>

ATARs and the HSC

ATARs and the HSC are calculated differently and are for different purposes

A student's HSC presents a profile showing the standards they achieved in the courses they studied. On the other hand, a student's ATAR is a rank indicating their overall academic achievement, not against a standard, but against other students. To get a high ATAR a student must not only have high HSC marks but be ranked highly in their courses across the state.

Some university courses have prerequisites, so it is important that you research these to assist you to make your subject choices – but be realistic: you are unlikely to be successful if you select a subject because it is a prerequisite for a university course but you do not have ability in that area. Many of the subjects which complete your 12 unit pattern of study, however, will not be mandatory to get into the university course of your choice, so it is important to choose subjects that you like and are interested in to achieve your highest ATAR. Remember, you will generally do better at subjects if you like them. When you think of anything in your life that you like, you are probably also good at it and subjects at school over the next 2 years will be the same.

Points on University entrance and the ATAR

- It is very difficult to gain access to any university courses with an ATAR below 65.
- If you want to get into a high demand, or highly demanding university course, some subject combinations do not lead to an ATAR over 80 UNLESS students gain Bands 6 and 5 in at least 3 of their subjects.
- Any Category B course included in the best 10 units generally does not have a high ATAR value, therefore students wanting an ATAR over 70 should keep 12 units in Year 12 so the category B course is not included in their best 10 units.
- Students in Year 11 need to keep 12 units of school-based study, in addition to any TVET course they may elect to study.
- Students may gain HSC marks which are all in the 60s and 70s and yet still gain an ATAR well under 50.
- 30% of Australians go to university straight from school.

ATARs and the HSC

What about ‘Scaling’?

Do not fall into the mistaken view that if you choose a subject that you heard ‘scales well’, you will be advantaged. Scaling is a complicated process and if you do not do well in such a course, you will not be ‘scaled up’ and you won’t get a better result than you would if you took a course more suited to your abilities. In truth, choosing subjects which you are good at and which interest you, is the best way to maximise your results. Be careful to choose the right level of course based on the recommendations of your teachers and your results in junior school. For example, do not choose Mathematics if you did not study Strand 5.3 (highest level) in Year 10, and your Maths teacher and your results in junior school suggest that you should choose Mathematics Standard instead; nor is choosing Physics a good idea if your Maths skills are not strong and you did not do Strand 5.3 in Year 10.

The scaling process is designed to encourage you to study courses you enjoy, are good at, and that best prepare you for future study. Because marks in different courses can’t be compared, marks of individual students are scaled before they are added to give the aggregates from which ATARs are determined. The underlying principle is that you should neither be advantaged nor disadvantaged by choosing one course over another.

HSC: All My Own Work

HSC: All My Own Work is a mandatory program designed to help HSC students to follow the principles and practices of good scholarship. It consists of five modules; Scholarship Principles and Practices, Acknowledging Sources, Plagiarism, Copyright, and Working with Others.

Students must complete **HSC: All My Own Work** or its equivalent before they can be enrolled for any Year 11 or HSC course with NESA via Schools Online. Only students entered for Stage 6 Life Skills courses are exempt from this requirement. **The HSC: All My Own Work** program is integrated with other NSW syllabuses and programs. The program is designed to be delivered flexibly as self-paced learning modules.

Note: At Maitland High School, students are required to complete these five modules and bring evidence that they have achieved 85% in each to their subject selection interviews.

The program is available on the NESA Website:

<http://educationstandards.nsw.edu.au/wps/portal/nesa/11-12/hsc/hsc-all-my-own-work>

What does Satisfactory Completion of a Course mean?

To satisfy the requirements and pass the Year 11 year, you must satisfactorily complete a minimum of 12 units. Satisfactory completion of a course means:

- You have met all or some of the course outcomes; and
- You have made a **genuine attempt** at assessment tasks which contribute more than 51% of the assessment total; and
- You have **genuinely participated** in experiences which are required by the syllabus, e.g. assignments, tests and examinations, major works, practical projects, effective completion of title pages; and
- You have **prepared yourself sufficiently** to enable you to make a serious attempt at the external HSC examination.

If your school principal does not certify the satisfactory completion of a Year 11 course, you cannot progress into the HSC part of that course. Students can be given provisional entry into the HSC course - provisional on their completion of Year 11 Assessment Tasks inside a designated time frame.

If you receive results in less than 12 Year 11 units following such a decision, you may proceed to the HSC course in the subjects in which you are satisfactory but you will need to repeat courses in which you are unsatisfactory (or do an alternate Year 11 course).

This means you will not be eligible for the HSC in 2021 and will require a further year of study either at school or at TAFE.

What does Satisfactory Attendance and Application mean?

Your overall attendance and application must be satisfactory to receive a Higher School Certificate and Record of Achievement.

You will be given written warning in sufficient time to allow you to correct any problems regarding your attendance, application, or course completion.

You have the right to appeal to NESA against your principal's decision. Your principal must advise you of this right and explain the appeal mechanism in such a case.

Selection of Subjects

We recommend you use the following strategies when making your choice of subjects:

1. Select subjects which are **necessary** (ie: pre-requisite, assumed knowledge, recommended) for your chosen career / tertiary course, provided:
 - a) you are reasonably sure about what **you wish to do**
 - b) **you have the ability** to obtain a satisfactory result in this subject.
2. Select subjects you are **interested in**. If you are interested in a given subject there is some probability that you will be interested in a career / tertiary course related to this subject, even if you don't know it yet.
3. Select subjects which **you are good at**. There is no point doing a subject at which you are poor simply because it is a prerequisite. If you can't cope at school you are unlikely to be able to cope with a similar course at a tertiary level. It may be wise for you to re-think your career goals.
4. If possible, always try to select subjects which will **keep your options open**, particularly if you are unsure about your future career/course direction. Draw up your plan for your pattern of studies for both the Year 11 and HSC years to ensure that you'll be eligible for an HSC.

Do not select courses based on what your friends choose!



Additional information about courses and the HSC is available on the NESA website:

<http://educationstandards.nsw.edu.au/wps/portal/nesa/home>

Board Developed Courses

The following pages provide details on the Board Developed Courses offered at Maitland High School in 2020.

ABORIGINAL STUDIES

Board Endorsed Course	<input checked="" type="checkbox"/>	Category A	<input checked="" type="checkbox"/>	HSC	<input checked="" type="checkbox"/>	1 Unit	<input checked="" type="checkbox"/>
Content Endorsed Course	<input checked="" type="checkbox"/>	Category B	<input checked="" type="checkbox"/>	ATAR	<input checked="" type="checkbox"/>	2 Unit	<input checked="" type="checkbox"/>

Course contribution: Nil



What is this course about?

The course focuses on Aboriginal peoples' relationship to the Land, Aboriginal heritage and identity, and an historical examination of colonialism, racism and prejudice from pre-contact times to the 1960s. The course includes the development of culturally appropriate research and inquiry methods. It also provides for in depth study of legislation, policy, judicial processes and current events from the 1960s. Students will undertake consultation with Aboriginal communities and study the experiences of national and international Indigenous communities.

Who should pick this course?

Students who have an interest in the traditional landowners of Australia, their history and society and culture today. Aboriginal students are provided with an opportunity for cultural affirmation and positive educational experiences while non-Aboriginal students are able to learn together with Aboriginal peoples and communities.

Where could this course lead?

For all students, Aboriginal Studies provides a flexible structure to prepare for further education and training, (University or TAFE) and employment. Students will develop research and analytical skills, the ability to do independent research and the ability to develop coherent arguments.

Who can I speak to about this course?

Mrs James-Cliff

Frequently Asked Questions about this course?

Do I need to be Aboriginal to do this course? No

Is there a major project in this course? Yes. There are several case studies and projects that you will complete in this course. The Year 11 course has a Local Community Case Study. The HSC course has a Major Project that will form about 30% of the course time in the HSC year. It will involve you undertaking fieldwork and research in the local community. You will need to maintain a log for this project.

ANCIENT HISTORY

Board Endorsed Course	<input checked="" type="checkbox"/>	Category A	<input checked="" type="checkbox"/>	HSC	<input checked="" type="checkbox"/>	1 Unit	<input checked="" type="checkbox"/>
Content Endorsed Course	<input checked="" type="checkbox"/>	Category B	<input checked="" type="checkbox"/>	ATAR	<input checked="" type="checkbox"/>	2 Unit	<input checked="" type="checkbox"/>

Course contribution: Nil



What is this course about?

Ancient History engages students in an investigation of life in early societies based on the analysis and interpretation of physical and written remains. It offers students the opportunity to investigate the possible motivations and actions of individuals and groups, and how they shaped the political, social, economic and cultural landscapes of the ancient world. Students will develop knowledge and understanding of a range of features, people, places, events and developments of the ancient world in their historical context.

Who should pick this course?

If you are keen to explore the past and especially ancient people and societies and you like researching and investigating the past, you will enjoy Ancient History. You will also learn to ask questions of history and conduct independent research to find out about your own areas of interest. This will require you to be able to work independently at times and be able to meet deadlines.

Where could this course lead?

The study of Ancient History helps young people to develop an opinion and to compare the past and the present. You will develop research skills and learn to think critically about events or issues in different ways. The Year 11 course introduces students to scientific methods used in investigating archaeological evidence while the HSC course puts the knowledge and skills learnt in Year 11 into practice. Ancient History suits students who want to go to University as well as students who wish to go to TAFE.

Who can I speak to about this course?

Mrs Scobie, Mrs Taylor or Mrs Matthews

Frequently Asked Questions about this course?

Do I need to be able to write essays or extended responses? Yes, this subject does include one section that requires an extended response (essay) in the HSC exam. Other sections of the HSC exam do require written responses but the questions are broken down into between 2 and 5 parts. The HSC exam also includes multiple choice and short answer questions. The Year 11 course also requires a major project called the Historical Investigation, where you design, research and write a paper on your topic.

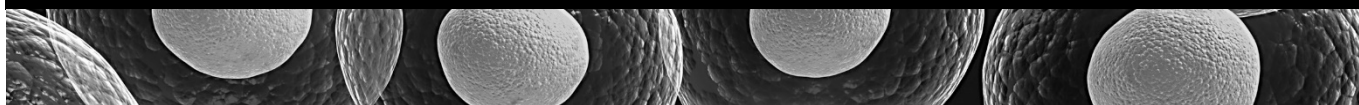
Do we study Australian History in Ancient History? It is possible to study Aboriginal Australian History but not compulsory and is not common to be studied at this school.

Is there a lot of reading? Yes, you will need to read a variety of material and complete homework which may be based or include independent reading of information.

BIOLOGY

Board Endorsed Course	<input checked="" type="checkbox"/>	Category A	<input checked="" type="checkbox"/>	HSC	<input checked="" type="checkbox"/>	1 Unit	<input checked="" type="checkbox"/>
Content Endorsed Course	<input checked="" type="checkbox"/>	Category B	<input checked="" type="checkbox"/>	ATAR	<input checked="" type="checkbox"/>	2 Unit	<input checked="" type="checkbox"/>

Course contribution: Nil



What is this course about?

Students studying Biology gain an understanding of living things and their interactions within the environment. It enables them to understand new biotechnologies, such as genetic engineering and helps them make informed choices about new technologies. This course teaches students to think critically and plan for investigations.

Who should pick this course?

Students who are interested in the functioning of living things and have the ability to think logically about problems. Students must be motivated, have the ability to keep on-task and work independently. A high level of achievement in Year 10 science is a recommended prerequisite.

Where could this course lead?

A career such as Nursing, PDHPE teaching, Medical Technicians, Paramedics, and Marine Biologists - Biology is a MUST.

Who can I speak to about this course?

Any member of the Science faculty.

Frequently Asked Questions about this course?

Can I study other science subjects with Biology? The maximum is 6 Units in Year 11 and 7 Units in Year 12.

Is Biology the easiest science subject? A common myth is that this subject is the easiest to study. The simple answer to this is, no. This subject is just as hard as Physics and Chemistry.

What other subjects are related to Biology? Geography also covers some of the concepts learnt in Biology which will be advantageous.

BUSINESS STUDIES

Board Endorsed Course	<input checked="" type="checkbox"/>	Category A	<input checked="" type="checkbox"/>	HSC	<input checked="" type="checkbox"/>	1 Unit	<input checked="" type="checkbox"/>
Content Endorsed Course	<input checked="" type="checkbox"/>	Category B	<input checked="" type="checkbox"/>	ATAR	<input checked="" type="checkbox"/>	2 Unit	<input checked="" type="checkbox"/>

Course contribution: Nil



What is this course about?

Business Studies is an exciting course that focuses on the role of business – especially small business in Australia and the world. Most students will work in a business whether it is a government business, their own business or someone else's business after completing high school. Students will get the opportunity to develop their understanding of business operation including marketing, employment relations, financial management and the management of modern business. Skills gained in Business Studies may also help the student to be self-employed.

Who should pick this course?

If you are interested in learning about the way a business operates; saving and investing, management of businesses, financial management and marketing, and you enjoy researching, you will enjoy Business Studies. This course is also for students who may one day want to own and operate their own business.

Where could this course lead?

Students will develop research, analytical, problem-solving, decision making, communication and critical thinking skills which will broaden not only their knowledge but enable them to participate as an informed citizen. Business Studies prepares students for a range of courses at University or TAFE such as a Business or Commerce degree. Some students continue their studies in Marketing or Financial Planning or Accounting. These courses are available at University and TAFE.

Who can I speak to about this course?

Mrs Matthews, Mrs Young, Mrs Anderson

Frequently Asked Questions about this course?

How is this subject assessed in school? In the Year 11 course your assessments will typically include a Business Report, writing a Business Plan and the Year 11 Exam. The HSC course will may include a Business Report, In class Extended Response and the Trial HSC Exam.

Do we get to study actual businesses? A major part of the course will include a study of a number of businesses. You will need to write about a business you have studied in the HSC Exam.

CHEMISTRY

Board Endorsed Course	<input checked="" type="checkbox"/>	Category A	<input checked="" type="checkbox"/>	HSC	<input checked="" type="checkbox"/>	1 Unit	<input checked="" type="checkbox"/>
Content Endorsed Course	<input checked="" type="checkbox"/>	Category B	<input checked="" type="checkbox"/>	ATAR	<input checked="" type="checkbox"/>	2 Unit	<input checked="" type="checkbox"/>

Course contribution: Nil



What is this course about?

Students studying Chemistry gain an understanding of chemicals, their reactions, properties and the interactions of energy and matter. It enables students to understand the nature of materials, such as natural and manmade substances and helps them make informed choices about their environmental importance. This course teaches students to think critically and plan for investigations through continual experimentation.

Who should pick this course?

Students who enjoy experimenting with chemicals and are good at problem solving. Students must be motivated, have the ability to keep on-task and the ability to work independently.

A high level of achievement Year 10 Science and Mathematics (5.3 strand) is a recommended prerequisite.

Where could this course lead?

If you are thinking of a career in Science, Engineering, Medicine, Veterinary Science, Medical Therapy, Pharmacy, Industrial Chemistry or Teaching at University then Chemistry is a MUST.

Who can I speak to about this course?

Any member of the Science faculty.

Frequently Asked Questions about this course?

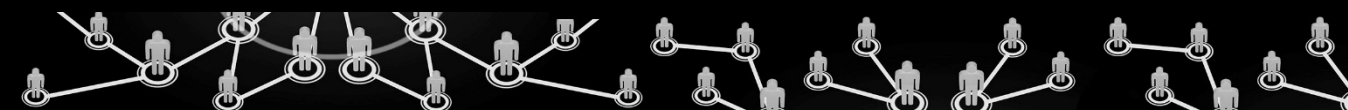
What if I don't want to go to University? Studying Chemistry successfully can lead to future advantages at TAFE. You can transfer credit to the following courses: Building Associate Diploma, Building Supervisor Advanced Cert. or Industrial Engineering Cert.

Can I study other science subjects with Chemistry? The maximum is 6 Units in Year 11 and 7 Units in Year 12.

COMMUNITY and FAMILY STUDIES

Board Endorsed Course	<input checked="" type="checkbox"/>	Category A	<input checked="" type="checkbox"/>	HSC	<input checked="" type="checkbox"/>	1 Unit	<input checked="" type="checkbox"/>
Content Endorsed Course	<input checked="" type="checkbox"/>	Category B	<input checked="" type="checkbox"/>	ATAR	<input checked="" type="checkbox"/>	2 Unit	<input checked="" type="checkbox"/>

Course contribution: Nil



What is this course about?

This course provides a fundamental basis for many careers and life experiences as individuals, families and community members. It involves the production of an Independent Research Project which is a mandatory requirement of the course.

It includes topics such as: resource management, individuals and groups, families and communities, groups in context, research methodology, parenting and caring, family and societal interactions, social impact of technology, individuals and work.

Who should pick this course?

Students wanting to gain knowledge and skills in a wide scope of topic areas relating to the individual, family and groups within the community. Students interested in careers noted in the next section.

Where could this course lead?

This course provides the basis for further study in a diverse range of areas.

Career options include: Nursing, Social Worker, Welfare, Community Worker, Special Needs Coordinator, Aged Group Welfare and Health Worker.

Who can I speak to about this course?

Mrs Howarth.

Frequently Asked Questions about this course?

Is this primarily a theory-based subject? Yes. The HSC Examination is 3 hours and has Multiple Choice, Short Answers and Extended Response components. Essays and short answer responses are part of the course.

Do you have to do the Independent Research Project? Yes. This research is based on any of the core areas and is a mandatory component of the course. It is worth 25% of the total course assessment and is marked by your teacher. This is an extensive project which requires students to complete in the first year of the CAFS HSC course.

Is this a practical or theory course? This is a theory based course.

DANCE

Board Endorsed Course	<input checked="" type="checkbox"/>	Category A	<input checked="" type="checkbox"/>	HSC	<input checked="" type="checkbox"/>	1 Unit	<input checked="" type="checkbox"/>
Content Endorsed Course	<input checked="" type="checkbox"/>	Category B	<input checked="" type="checkbox"/>	ATAR	<input checked="" type="checkbox"/>	2 Unit	<input checked="" type="checkbox"/>

Course contribution: \$10



What is this course about?

The focus is Dance as an art form. The course is broken down into three core areas: Performance, Composition and Appreciation. Students will develop their understanding and skills in the area of dance technique with a strong focus on safe dance principles and body mechanics. They will also learn the theories, principles and practices of dance composition that communicates intent. Students learn to appreciate dance as an art form through analysing and interpreting professional works by artists.

Who should pick this course?

Students with an academic and/or creative focus who have an experience and interest in dance. It is a demanding course that is interesting, challenging and very rewarding.

Where could this course lead?

Dance in tertiary institutions in Australia has grown considerably over the past decade. There are a number of undergraduate courses and graduate courses that offer further studies in dance. This course will also provide valuable skills for students wishing to move forward into various areas such as: the Arts industry (Musical Theatre, Stage Management, Bachelor of Arts), Sports Science industries and Teaching.

Who can I speak to about this course?

Mrs Gambrill (PDHPE Faculty).

Frequently Asked Questions about this course?

Is there a theoretical component to the course? The course is both largely theoretical and practical and students will be examined on both these requirements in the HSC. The theoretical work involves applying theoretical knowledge in a practical sense. An example is applying the safe dance principle of alignment in their core performance.

Do I need to be a good dancer? A large component of the course requires practical dance skills. In saying that, a lot of the skills required will be taught throughout the course. With the option of choosing your Major Study, students are able to select the area they are most comfortable / experienced in. Therefore a wealth of dance experience is desirable but not a compulsory requirement.

What does the Major Study involve? The student can select from the following options:

- i) Major Performance (Dance Technique – perform a dance taught by a teacher).
- ii) Major Composition (Choreography – student choreographs their own work to teach to another student to perform).
- iii) Major Appreciation (Analysis of professional works and the study of seminal artists.)

DRAMA

Board Endorsed Course	<input checked="" type="checkbox"/>	Category A	<input checked="" type="checkbox"/>	HSC	<input checked="" type="checkbox"/>	1 Unit	<input checked="" type="checkbox"/>
Content Endorsed Course	<input checked="" type="checkbox"/>	Category B	<input checked="" type="checkbox"/>	ATAR	<input checked="" type="checkbox"/>	2 Unit	<input checked="" type="checkbox"/>

Course contribution: Year 11 - \$25; Year 12 - \$25



What is this course about?

Drama is the study and practice of theatre and performance. Students work both individually and collaboratively in groups to devise performances, pursue individual interests in various facets of drama, and engage experientially in studies of theatrical movements and texts. The course offers students the opportunity to explore and consider the human experience and to develop interpersonal, collaborative and negotiation skills which become lifelong assets.

Who should pick this course?

Students who are interested in exploring human nature, ideas and how they and others interact with the world will find Drama a subject of endless fascination. If you are interested in either performing, backstage technical work, costume, set, or poster and program design, film-making, historical study of the theatre, theatre directing or all of the above, then this course allows you the scope to explore your particular interest.

Where could this course lead?

Besides providing students with many valuable skills which can translate to any job undertaken in the world of work, the Drama course can provide necessary Year 11 experiences for any future course of study. Drama is not just for students who want to be actors. The Australian Theatre and Television industry is a vibrant contributor to our economy and provides numerous opportunities for both performers and technicians, nationally and locally. The Drama course will suit students who choose to go to either University or TAFE.

Who can I speak to about this course?

Miss Ross and Ms Benton.

Frequently Asked Questions about this course?

Do I have to act in front of anyone? Yes, but many shy students overcome their shyness about performing for an audience and this is part of the personal development that Drama offers. The only time that you **HAVE** to perform in front of an audience is at the end of Year 12 where all students are required to take part in a **GROUP PERFORMANCE**. This means that you are not performing by yourself but with others—so you are supporting each other.

I like movies - can I make a video for my Individual Project rather than do a performance on my own?

Yes. Video is an option for the Individual Project.

ENGLISH ADVANCED

Board Endorsed Course	<input checked="" type="checkbox"/>	Category A	<input checked="" type="checkbox"/>	HSC	<input checked="" type="checkbox"/>	1 Unit	<input checked="" type="checkbox"/>
Content Endorsed Course	<input checked="" type="checkbox"/>	Category B	<input checked="" type="checkbox"/>	ATAR	<input checked="" type="checkbox"/>	2 Unit	<input checked="" type="checkbox"/>

Course contribution: \$30



What is this course about?

In the English Advanced Year 11 course, students explore, examine and analyse a range of texts which include prose fiction, drama, poetry, nonfiction, film, digital and media, as well as Australian texts. They explore the ways events, experiences, ideas, values and processes are represented in and through texts and analyse the ways texts reflect different attitudes and values. In the English Advanced Year 12 course, students further strengthen their knowledge and understanding of language and literature by analysing and evaluating texts and the ways they are valued in their contexts. Students study at least four prescribed texts drawn from: Shakespearean drama; prose fiction; poetry or drama; film or media or nonfiction.

Who should pick this course?

This is a **highly challenging course** designed to extend students who already possess highly developed skills in English and a genuine interest in literature and language. The study of Shakespeare is a mandatory requirement of this course. Students are also expected to read other classical texts as part of their studies. Students who have a consistent record of achieving exceptional results in Year 10 English are most suited to this course.

Where could this course lead?

The study of the Advanced English course instils skills and knowledge which are marketable, adaptable and sophisticated. The skills developed in this course transfer to most career areas and allow students to better cope with the literacy demands of complex course. This course may also be a prerequisite for some university courses.

Who can I speak to about this course?

Mr MacDonald and your current English teacher.

Frequently Asked Questions about this course?

Should I do this course? The best person to ask is your teacher; they have worked closely with you and know your ability level. They will also know your level of application and self-motivation. A proven strong work ethic is crucial for success at this level. This course requires consistent effort.

Will I gain a better ATAR if I do this course? Strong ATAR gains can be achieved in this course if students return above average results, however, this always requires a significant effort from the student.

ENGLISH EXTENSION

Board Endorsed Course	<input checked="" type="checkbox"/>	Category A	<input checked="" type="checkbox"/>	HSC	<input checked="" type="checkbox"/>	1 Unit	<input checked="" type="checkbox"/>
Content Endorsed Course	<input checked="" type="checkbox"/>	Category B	<input checked="" type="checkbox"/>	ATAR	<input checked="" type="checkbox"/>	2 Unit	<input checked="" type="checkbox"/>

Course contribution: \$30



What is this course about?

In the English Extension Year 11 course, students explore the ways in which aspects and concerns of texts from the past have been carried forward, borrowed from and/or appropriated into more recent culture. They consider how and why cultural values are maintained and changed.

This is an additional unit of English for students who are **also** studying the 2 unit **Advanced Course**. It requires **extensively developed English skills**. Students who complete the Year 11 Extension One English course have the option of studying another unit of English in the Higher School Certificate course. Extension Two English involves the completion of a Major Work.

Who should pick this course?

This is a demanding course designed for students who already possess highly developed skills and a passion for English. A genuine interest in language and literature, carefully refined English skills, a strong work ethic and the ability to work independently with complex texts are necessary for success in this course. Students who have a consistent record of achieving extraordinary results in Year 10 English are most suited to this course.

Where could this course lead?

The skills taught in Extension One English are transferable to most career settings that involve higher order understandings of our language and the human condition. In particular, research or academic based careers.

Who can I speak to about this course?

Mr MacDonald and your current English teacher.

Frequently Asked Questions about this course?

Should I do this course? The best person to ask is your teacher; they have worked closely with you and know your ability level. They will also know your level of application and self-motivation. A proven strong work ethic is crucial for success at this level. This course requires consistent effort.

Will I gain a better ATAR if I do this course? Strong ATAR gains can be achieved in this course if students return above average results, however, this always requires a significant effort from the student.

ENGLISH STANDARD

Board Endorsed Course	<input checked="" type="checkbox"/>	Category A	<input checked="" type="checkbox"/>	HSC	<input checked="" type="checkbox"/>	1 Unit	<input checked="" type="checkbox"/>
Content Endorsed Course	<input checked="" type="checkbox"/>	Category B	<input checked="" type="checkbox"/>	ATAR	<input checked="" type="checkbox"/>	2 Unit	<input checked="" type="checkbox"/>

Course contribution: \$10



What is this course about?

In the English Standard Year 11 course, students learn about language and literature by exploring and experimenting with the ways events, experiences, ideas and processes are represented in and through texts. Students study a range of texts which include prose fiction, drama, poetry, nonfiction, film, digital and media, as well as Australian texts.

In the English Standard Year 12 course, students further strengthen their knowledge and understanding of language and literature by reflecting on and demonstrating the effectiveness of texts, including their own, for different audiences and purposes. Students study at least three types of prescribed texts drawn from: prose fiction; poetry or drama; film or media or nonfiction texts.

In this course, students will consolidate their English literacy skills in order to enhance their personal, social, educational and vocational lives.

Who should pick this course?

All students who require an ATAR but do not meet the academic requirements needed to study the Advanced English course.

Where could this course lead?

The study of the Standard English course instils the skills and knowledge necessary for students to become competent and functional communicators for their career and life.

Who can I speak to about this course?

Mr MacDonald and your current English teacher.

Frequently Asked Questions about this course?

Is this the easy English course? Students who work hard find this course less challenging than those who do not. This is a difficult course and students who struggle with the literacy demands of English may find this subject extremely difficult to meet the requirements of Standard English. The English Studies course may be a suitable alternative.

Is there much reading in this course? Yes.

ENGLISH STUDIES

Board Endorsed Course	<input checked="" type="checkbox"/>	Category A	<input checked="" type="checkbox"/>	HSC	<input checked="" type="checkbox"/>	1 Unit	<input checked="" type="checkbox"/>
Content Endorsed Course	<input checked="" type="checkbox"/>	Category B	<input checked="" type="checkbox"/>	ATAR	<input checked="" type="checkbox"/>	2 Unit	<input checked="" type="checkbox"/>

Course contribution: \$10



What is this course about?

This course is designed to meet the specific needs of students who wish to refine their skills and knowledge in English and consolidate their literacy skills. It is a course for students who are seeking an alternative to the English Standard course and who intend to proceed from school directly into employment or vocational training.

English Studies is a Stage 6 Board Developed Course with an optional HSC examination. Students who complete the course and elect to take the optional Higher School Certificate examination will be reported on a Common Scale with the English Standard and English Advanced courses. Students choosing not to sit the optional English Studies HSC examination will still be eligible for the HSC.

Students who take English Studies in the HSC and want to receive an ATAR will need to remember that only 2 units of Category B courses can be included, and at least 2 units of English must be included, in the ATAR calculation. Therefore, English Studies students who want an ATAR will not be able to include any other Category B units and will need at least 8 units of Category A courses.

Who should pick this course?

English Studies addresses the needs of students who wish to complete and be awarded a Higher School Certificate but who are seeking an alternative to the current Standard English course. This is a course suited to students who want to study a more practical English course and who do not need an ATAR.

Where could this course lead?

The skills gained in this course have proven vocational value and can be applied to a wide range of workplace opportunities.

Who can I speak to about this course?

Mr MacDonald and your current English teacher.

Frequently Asked Questions about this course?

Does this course count towards the HSC? Yes, it does but you must study at least 8 units of Category A subjects to be eligible for an ATAR.

FOOD TECHNOLOGY

Board Endorsed Course	<input checked="" type="checkbox"/>	Category A	<input checked="" type="checkbox"/>	HSC	<input checked="" type="checkbox"/>	1 Unit	<input checked="" type="checkbox"/>
Content Endorsed Course	<input checked="" type="checkbox"/>	Category B	<input checked="" type="checkbox"/>	ATAR	<input checked="" type="checkbox"/>	2 Unit	<input checked="" type="checkbox"/>

Course contribution: \$80



What is this course about?

This course aims to develop an understanding about food systems in the production, processing and consumption of food. It involves the study of nutrition and its relationship to health. Students learn about the importance of food to a person's wellbeing and to the social and economic future of Australia.

Topics are: Year 11 - food availability and selection, food quality, nutrition
Year 12 – The Australian food industry, food manufacture, food product development, contemporary nutrition issues.

Who should pick this course?

Students who want to develop their research, analysis, communication and food preparation skills. Students will develop skills by experimenting with and preparing food as well as designing, implementing and evaluating solutions to a range of food solutions.

Where could this course lead?

This course provides the basis for further study in a diverse range of career options such as: Food technologist, dietetics, food research, food marketing, teaching, nutrition fields.

Who can I speak to about this course?

Mrs Howarth.

Frequently Asked Questions about this course?

Is this course like junior Food Technology? No, this course investigates nutrition, food production and the food industry in much greater detail.

Should I have done Food Technology in years 9/10 to do this course in Year 11 and 12? No. It doesn't matter if you have didn't study Food Technology in the junior years.

How much practical is in this course? This course is **not the same** as junior Food Technology. This course **does NOT** have weekly practicals, but there are food experiments. This course as it is about investigating and learning about food quality, processing and the food industry. Practical will relate to the topic studied with some of these practicals being components of assessment tasks. It is a **mandatory requirement** that students undertake practical activities.

Does this course have a HSC Examination? Yes. The HSC Examination is 3 hours and has Multiple Choice, Short Answers and Extended Response components. Essays and short answer responses are part of the course.

GEOGRAPHY

Board Endorsed Course	<input checked="" type="checkbox"/>	Category A	<input checked="" type="checkbox"/>	HSC	<input checked="" type="checkbox"/>	1 Unit	<input checked="" type="checkbox"/>
Content Endorsed Course	<input checked="" type="checkbox"/>	Category B	<input checked="" type="checkbox"/>	ATAR	<input checked="" type="checkbox"/>	2 Unit	<input checked="" type="checkbox"/>

Course contribution: Nil



What is this course about?

Geography is about investigating the world (biophysical features) and in particular the impact of people on the biophysical environment. Students will gain an understanding of environmental change, its causes and effects. The Year 11 Course provides an overview of the biophysical; environment and the four spheres, i.e. the biosphere, which is made up of the atmosphere (air), the hydrosphere (water), and the lithosphere (earth). The Year 12 course focuses on three major topics. These are “Ecosystems at Risk” with the Great Barrier Reef and the Stockton Sand Dunes as the case studies, “Urban Places” and “People and Economic Activity”, with the Hunter Vineyards studied as the case study. The use of fieldwork to investigate these issues is also a major aspect of the course with excursions to Awabakal Field Studies Centre, Pyrmont Sydney, Stockton Sand Dunes and the Hunter Valley Sand Dunes.

Who should pick this course?

If you are interested in the environment, enjoy investigating or researching issues both in the field, on the internet and through the use of other geographical skills.

Where could this course lead?

Geography prepares students for future employment and for participation as an informed citizen. Study at university in faculties of science, environmental sciences and geography or TAFE courses.

Who can I speak to about this course?

Mrs Young, Mrs Matthews

Frequently Asked Questions about this course?

Do we need to do a project? Students in the Year 11 course complete a Senior Geography Course (SGP), based on an issue that the student can choose themselves.

Are there excursions? Yes, you will do several fieldwork trips to Awabakal Field Studies Centre, Stockton Sand Dunes, Sydney, Hunter Valley Sand Dunes and other locations throughout the two years.

INDUSTRIAL TECHNOLOGY MULTIMEDIA

Board Endorsed Course	<input checked="" type="checkbox"/>	Category A	<input checked="" type="checkbox"/>	HSC	<input checked="" type="checkbox"/>	1 Unit	<input checked="" type="checkbox"/>
Content Endorsed Course	<input checked="" type="checkbox"/>	Category B	<input checked="" type="checkbox"/>	ATAR	<input checked="" type="checkbox"/>	2 Unit	<input checked="" type="checkbox"/>

Course contribution: Year 11 - \$50, Year 12 - \$50



What is this course about?



Digital technology has completely transformed the Multimedia industry; our world is made by designers. Everything we see, from websites and advertisements to games, films and logos has been created using technology. This course allows you to explore text, images, video, animation and sound through a huge range of software and then allows you the flexibility to be creative as you design and develop your own projects.

The HSC content is centred on the application of design, research and manufacture of a Major Project and related folio, together with a more detailed study of the multimedia industry.

Who should pick this course?

You should pick this course if you have a keen interest in technology and multimedia production, enjoy 'hands on' work with computers and various multimedia software programs, and are considering studying design at University or TAFE to obtain work in the Multimedia / Business or Marketing Industry fields.

Where could this course lead?

The study of Industrial Technology Multimedia provides students with knowledge, understanding and skills that form a valuable foundation for a range of courses at university and other tertiary institutions. It provides students with a sound knowledge base for working in Industry whilst improving time management and collaboration skills through the completion of projects.

Who can I speak to about this course?

Mrs Chapman-Hardy, Mr Noble

Frequently Asked Questions about this course?

Do I have to have previously studied computers course in the junior years? No, all ability levels are catered for.

Is there an exam for this subject? Yes, your HSC is comprised of 60 marks from the major project and 40 marks for a one and a half hour exam.

What does the major project involve? The major project involves designing a multimedia project of your choice, creating the project and documenting your planning and progress in a folio. The project is externally marked prior to the HSC examination. The major project is worth 60% of the final mark.

INDUSTRIAL TECHNOLOGY TIMBER

Board Endorsed Course	<input checked="" type="checkbox"/>	Category A	<input checked="" type="checkbox"/>	HSC	<input checked="" type="checkbox"/>	1 Unit	<input checked="" type="checkbox"/>
Content Endorsed Course	<input checked="" type="checkbox"/>	Category B	<input checked="" type="checkbox"/>	ATAR	<input checked="" type="checkbox"/>	2 Unit	<input checked="" type="checkbox"/>

Course contribution: Year 11 - \$50; Year 12 - \$30 + Apron (approx. \$12)

What is this course about?

This is a 'hands-on' course where students design and construct projects from timber. In Year 11 students develop the skills needed for the HSC course. The HSC course requires students to design, plan and construct their own projects.

Who should pick this course?

This course is aimed at students who enjoy working with timber and for students wanting to pursue a career involving timber and construction. Students will learn about timber materials, properties, processes and production with tools and machinery used in the industry.

Where could this course lead?

Students taking this course usually aim to undertake further study in a related field at TAFE. Students develop knowledge and understanding of the timber industry and its related technologies with an emphasis on design, management and production through practical tasks.

Who can I speak to about this course?

Mr Kelly or Mr Keith

Frequently Asked Questions about this course?

Do I have to sit for an HSC Examination? Yes. This is a 1½ hour examination. (40% of total HSC result)

Is there a Major Project? Yes, it is worth 60% (40 marks product + 20 marks folio) of the total HSC external result. The Major Project is marked by external HSC markers.

When do we start making the Major Project? Designing and planning the Major Project can start at the beginning of Year 11 but practical work can only begin at the start of Term 4 in that year (i.e. when the Year 12 courses begin).

Do I have to pay for my own materials? Yes, students MUST supply all their own materials for the Major Project. There is an annual contribution fee of \$50 - this covers materials for minor projects. Specialised components, such as hinges, have to be supplied by the student.

Is there a theory component to this course? Yes, the theory covers related skills needed to produce both the folio and product. It is also a requirement to prepare the student for the HSC Examination.

What student would be suitable for this class? A student, who enjoys working with timber, adheres to safety practices and who wants to develop skills in this field. PPE (Leather shoes & safety wear are compulsory in the workshop).

INFORMATION PROCESSES & TECHNOLOGY

Board Endorsed Course	<input checked="" type="checkbox"/>	Category A	<input checked="" type="checkbox"/>	HSC	<input checked="" type="checkbox"/>	1 Unit	<input checked="" type="checkbox"/>
Content Endorsed Course	<input checked="" type="checkbox"/>	Category B	<input checked="" type="checkbox"/>	ATAR	<input checked="" type="checkbox"/>	2 Unit	<input checked="" type="checkbox"/>

Course contribution: Year 11 - \$50; Year 12 - \$30

What is this course about?



Today we live in a world based around technology. This technology rapidly changes, but the process to develop new or improved computer based information systems work off the same principles. This course allows students to develop projects and skills using a consistent and reliable set of steps to achieve a desired outcome. This will be beneficial in further education, employment and everyday life.

Students develop skills in: Project Management, Databases, Communication, Multimedia and the design of websites, teamwork and time management

Who should pick this course?

Students who are looking at a career in business or any facet of the computing industry including IT; Multimedia; Project Management or looking at acquiring time management skills to enhance learning or develop technology skills to enhance further education at TAFE or University.

Where could this course lead?

By undertaking IPT, students will gain the skills and necessary knowledge to enter many career pathways with the ability to undertake project based tasks. This knowledge can also aid in the pathways of further education within TAFE and universities for students who will continue study in any course.

Who can I speak to about this course?

Mrs Chapman-Hardy, Mr Noble or Mr Eaton

Frequently Asked Questions about this course?

Do I need to have strong computer skills and knowledge to undertake this course? No. This course allows students with varying computing skills to develop additional skills throughout the two years. The course allows students to develop higher level thinking skills.

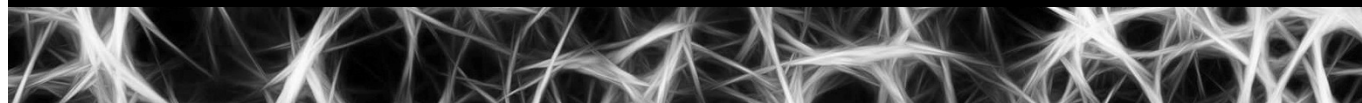
Will I get to do practical computing work? Yes. This course involves both individual and group projects. These allow you to do extensive hands-on computing and be involved in collaborative work that simulates the real world.

Will I get to use a great range of software? Yes. You will get to use a great variety of software, much of it open source (and available to you at home), while you complete both your learning and assessment tasks.

INVESTIGATING SCIENCE

Board Endorsed Course	<input checked="" type="checkbox"/>	Category A	<input checked="" type="checkbox"/>	HSC	<input checked="" type="checkbox"/>	1 Unit	<input checked="" type="checkbox"/>
Content Endorsed Course	<input checked="" type="checkbox"/>	Category B	<input checked="" type="checkbox"/>	ATAR	<input checked="" type="checkbox"/>	2 Unit	<input checked="" type="checkbox"/>

Course contribution: Nil



What is this course about?

Students studying Investigating Science will gain an understanding of the role of science and scientists in our everyday lives. The course is focused on developing the Working Scientifically skills, as they provide a foundation for students to value investigation, solve problems, develop and communicate evidence-based arguments, and make informed decisions. It promotes active inquiry and explores key concepts, models and phenomena, while drawing and building on the knowledge, understanding, skills, values and attitudes gained in Science Stage 5.

Who should pick this course?

Investigating Science caters for those students interested in extending themselves. Providing interesting science experiences for those students wanting a breadth of scientific knowledge. This course demands the rigour needed for all other science subjects. You must be motivated and have the ability to work independently. This is an important course for those students interested in completing the Extension 1 course in Year 12.

A high level of achievement Year 10 science and mathematics are a recommended prerequisite.

Where could this course lead?

A career in scientific research.

Who can I speak to about this course?

Any member of the Science faculty.

Frequently Asked Questions about this course?

Can I study other science subjects with Investigating Science? The maximum is 6 Units in Year 11 and 7 Units in Year 12.

MATHEMATICS

Board Endorsed Course	<input checked="" type="checkbox"/>	Category A	<input checked="" type="checkbox"/>	HSC	<input checked="" type="checkbox"/>	1 Unit	<input checked="" type="checkbox"/>
Content Endorsed Course	<input checked="" type="checkbox"/>	Category B	<input checked="" type="checkbox"/>	ATAR	<input checked="" type="checkbox"/>	2 Unit	<input checked="" type="checkbox"/>

Course contribution: Nil



What is this course about?

After a review of the Year 10 course you will build on those competencies and develop other aspects of Mathematics not previously studied.

Who should pick this course?

Students who are proficient in the Year 10 Pathway 5.3 course or very proficient in the Pathway 5.2 course (discuss with your class teacher). This course is a basis for any tertiary study where Mathematics is needed as a minor discipline. It would aid in the study of any of the life sciences or business/commerce.

Where could this course lead?

Mathematics at this level or higher will broaden the range of university courses that you may enter and give you an advantage over the students that may have studied Mathematics at a lower level. For example careers in; the Defence Force, Electronics, Finance, Accountant, Architecture, Surveying, Technical Drawing, and Town Planning.

Who can I speak to about this course?

Mr McKay or any of the Mathematics faculty.

Frequently Asked Questions about this course?

Will this course be too hard for me? Your current Mathematics teacher or past teachers will give you an honest assessment on whether or not they believe you are capable of studying at this level.

Do I need Mathematics? Many students do not have a clear path of study beyond Year 12. By studying Mathematics you are keeping your options open.

Can I change to Standard Mathematics if it is too hard? Yes, but it is best to make that decision as early as possible in the course. Remember the General Mathematics course and this course do not have common work so you will need to catch up if you change courses.

MATHEMATICS - EXTENSION 1

Board Endorsed Course	<input checked="" type="checkbox"/>	Category A	<input checked="" type="checkbox"/>	HSC	<input checked="" type="checkbox"/>	1 Unit	<input checked="" type="checkbox"/>
Content Endorsed Course	<input checked="" type="checkbox"/>	Category B	<input checked="" type="checkbox"/>	ATAR	<input checked="" type="checkbox"/>	2 Unit	<input checked="" type="checkbox"/>

Course contribution: Nil



What is this course about?

This course builds (an additional unit) on the Mathematics (2 unit) course. Students do Mathematics (2 unit) plus 3 extra periods to add the extra unit. Generally speaking, this course takes most topics to an increased degree of difficulty.

Who should pick this course?

If you enjoy the challenge of sophisticated Mathematics you will enjoy the challenges presented in this course. If you intend to do any Mathematics course at university or any course which requires a high level of pure Mathematics, this course provides an excellent foundation.

Where could this course lead?

University studies where Mathematics is a major prerequisite. Typically, university studies in Engineering and Science will have Extension 1 Mathematics as a prerequisite.

Who can I speak to about this course?

Mr McKay or any of the Mathematics faculty.

Frequently Asked Questions about this course?

Can I drop Extension 1 Mathematics? Yes, this course is an extension of the Mathematics course so you can change at any time - this includes changing during Year 12.

Can I start with the Mathematics course then take up the Extension 1 course if I am doing very well? Generally the answer is no – only in exceptional circumstances would such a change be considered.

Can I do the Extension course for in Year 11 and then drop back to Mathematics for Year 12? Yes. The extra work undertaken in the Year 11 Extension course will be beneficial in the Year 12 Mathematics course.

Students showing high levels of proficiency in the Extension 1 Mathematics course can consider electing to take up Extension 2 Mathematics in Year 12.

MATHEMATICS STANDARD

Board Endorsed Course	<input checked="" type="checkbox"/>	Category A	<input checked="" type="checkbox"/>	HSC	<input checked="" type="checkbox"/>	1 Unit	<input checked="" type="checkbox"/>
Content Endorsed Course	<input checked="" type="checkbox"/>	Category B	<input checked="" type="checkbox"/>	ATAR	<input checked="" type="checkbox"/>	2 Unit	<input checked="" type="checkbox"/>

Course contribution: Nil



What is this course about?

The Mathematics Standard course focus on enabling students to use mathematics effectively, efficiently and critically to make informed decisions in their daily lives. They provide students with the opportunities to develop an understanding of, and competence in, further aspects of mathematics through a large variety of real-world applications for a range of concurrent HSC subjects. The study of Mathematics Standard enables students to develop their knowledge and understanding of what it means to work mathematically, improve their skills to solve problems relating to their needs and aspirations, and improve their understanding of how to communicate in a concise and systematic manner.

Who should pick this course?

This course is suited to all students as it builds on your existing mathematical knowledge and work and concepts that you have seen and would be familiar with. If you want an apprenticeship or trade course, the Standard Mathematics course is essential. Completing 5.1 or 5.2 Mathematics in Year 10 is crucial.

Where could this course lead?

The Year 11 course is organised in topics, with the topics divided into subtopics. The Year 11 course is undertaken by all students intending to study either the Mathematics Standard 1 or the Mathematics Standard 2 in Year 12. Mathematics Standard 1 is designed to help students improve their numeracy by building their confidence and success in making mathematics meaningful. Mathematics Standard 2 is designed for those students who want to extend their mathematical skills beyond Stage 5 but are not seeking the in-depth knowledge of higher mathematics that the study of calculus would provide.

Mathematics is a requirement for Trade courses such as Building, Fitting & Turning, Heavy Industries, Manufacturing, Mechanics, etc. Many TAFE courses have mathematical components that will be more easily understood by having completed this course.

Who can I speak to about this course?

Mr McKay or any of the Mathematics faculty.

Frequently Asked Questions about this course?

Why do Mathematics, I am never going to use it? This course contains many concepts (consumer mathematics, investments, savings, tax, buying, selling, and measurement topics) that will be used in everyday life.

Is the course hard? It is basically Year 10 topics, so you have already seen much of the work. The second time around it will be easier - remember you are also more mature this time around. But you will need to work and also keep up to date.

MODERN HISTORY

Board Endorsed Course	<input checked="" type="checkbox"/>	Category A	<input checked="" type="checkbox"/>	HSC	<input checked="" type="checkbox"/>	1 Unit	<input checked="" type="checkbox"/>
Content Endorsed Course	<input checked="" type="checkbox"/>	Category B	<input checked="" type="checkbox"/>	ATAR	<input checked="" type="checkbox"/>	2 Unit	<input checked="" type="checkbox"/>

Course contribution: Nil



What is this course about?

Modern History engages students in an investigation of the forces, ideas, movements and developments that have shaped the modern world, based on the analysis and interpretation of sources. It offers students the opportunity to examine the role and motivations of key individuals and groups, and how they have shaped the world politically, economically, socially and culturally.

Who should pick this course?

If you are interested in key movements and ideologies, are curious about the human struggle, and how or why world events happened and their significance, then this course would interest you. If you like to critically analyse information and you want to understand the world today, then you will find the units interesting.

Where could this course lead?

The study of Modern History helps young people to develop an opinion and to compare the past and the present. You will develop research skills and learn to think critically about events or issues in different ways. You will develop good organisation and time management which will allow you to prepare successfully for assessments and exams. This could also provide good grounding for university study.

Who can I speak to about this course?

Mrs Scobie, Mrs Young

Frequently Asked Questions about this course?

Do I need to be able to write essays or extended responses? Yes, this subject requires extended response (essay) writing in both in-school assessments and in the HSC exam. The HSC exam also includes multiple choice and short answer questions.

MUSIC

Board Endorsed Course	<input checked="" type="checkbox"/>	Category A	<input checked="" type="checkbox"/>	HSC	<input checked="" type="checkbox"/>	1 Unit	<input checked="" type="checkbox"/>
Content Endorsed Course	<input checked="" type="checkbox"/>	Category B	<input checked="" type="checkbox"/>	ATAR	<input checked="" type="checkbox"/>	2 Unit	<input checked="" type="checkbox"/>

Course contribution: Year 11/12 - \$40 per year plus optional \$60 instrument hire



What is this course about?

Music is the study of a variety of musical styles or contexts - these will reflect the interests of the student. This course is facilitated through the study of an instrument of the student's choice. Students can concentrate their learning through the electives - these are Performance, Composition and Musicology. Performance involves students developing skills in playing their choice of instrument. Composition focuses on learning how to write a piece of music and Musicology is the study of different musical genres, periods and styles.

Who should pick this course?

Students who have a keen interest in music and who are eager to perform in a variety of situations including in class and in public.

Where could this course lead?

The course can lead to tertiary study both at university and TAFE. Students can perform in public and can also teach less proficient students.

Who can I speak to about this course?

Ms Benton, Mr Finnane, Mr Long and/or Miss Weekes.

Frequently Asked Questions about this course?

Do I have to play an instrument? Can I sing? Yes, in order to gain full benefits from the course and develop full musical potential performance experience is desired. If you like to sing, voice will be your instrument.

Do I have to play in public? It is expected that all music students willing take part in school based performances when required. This will help to develop performance skills and build confidence.

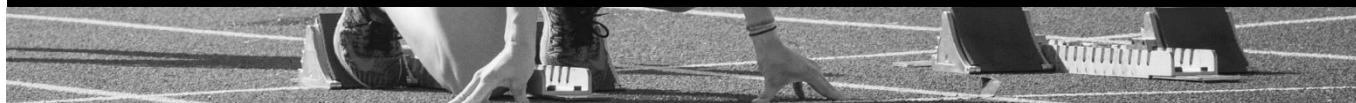
Do I need to read music? No, but it is helpful to have a basic understanding of music notation relevant to your specific instrument.

Is there a theory component? Yes 30% of this course is theory based focusing on the concepts of music and how you aurally identify their use.

PDHPE

Board Endorsed Course	<input checked="" type="checkbox"/>	Category A	<input checked="" type="checkbox"/>	HSC	<input checked="" type="checkbox"/>	1 Unit	<input checked="" type="checkbox"/>
Content Endorsed Course	<input checked="" type="checkbox"/>	Category B	<input checked="" type="checkbox"/>	ATAR	<input checked="" type="checkbox"/>	2 Unit	<input checked="" type="checkbox"/>

Course contribution: \$15



What is this course about?

Students focus on major issues related to Australia's health status, as well as study the factors that affect physical performance. Optional units include topics on Sports Medicine, Improving Performance and Fitness Choices.

Who should pick this course?

Students with an academic focus who have an interest and perhaps an aptitude in physical or health pursuits. It is a demanding course that is interesting, challenging and very rewarding.

Where could this course lead?

A career in the health, recreation or fitness industries, and substantial experience in subject matter related to many university courses such as teaching, physiotherapy, dietetics and nursing.

Who can I speak to about this course?

Mr Jones or Miss Primrose

Frequently Asked Questions about this course?

Do you get to do practical work in this subject? You do but not in the same form as in junior PDHPE classes. The practical work that is undertaken is closely related to the theory topics and involves applying theoretical knowledge in a practical sense. An example would be undertaking skill activities in Basketball to identify the components of skill and stages of skill development (Core 2 in the HSC course).

Who chooses the options we study? The staff member and the students will collaborate on the choice of option topics.

Do many students choose this subject? This subject has the sixth largest number of students who sit for the HSC.

How is this subject different to SLR? Sport, Lifestyle and Recreation is a subject that has equal hours dedicated to theory and practical work - 2 Unit PD/H/PE is academically challenging and theory based.

PHYSICS

Board Endorsed Course	<input checked="" type="checkbox"/>	Category A	<input checked="" type="checkbox"/>	HSC	<input checked="" type="checkbox"/>	1 Unit	<input checked="" type="checkbox"/>
Content Endorsed Course	<input checked="" type="checkbox"/>	Category B	<input checked="" type="checkbox"/>	ATAR	<input checked="" type="checkbox"/>	2 Unit	<input checked="" type="checkbox"/>

Course contribution: Nil



What is this course about?

Students studying Physics gain an understanding of natural forces in our universe. It enables them to understand the fundamentals of forces, matter and their interrelationships. One aim is to reveal the simplicity underlying many complex systems from sub-atomic particles to the entire universe. While there is continual development of many physics models, the role of experimenting to decide competing theories is also an important component in this course.

Who should pick this course?

Students who enjoy experimenting with the physical world and are good at problem solving. You will need to be motivated, have the ability to keep on task and work independently. Students who are highly proficient in Year 10 Science and Mathematics (5.3 Strand).

Where could this course lead?

Students who are thinking of a career in Science, Engineering, Medicine, Veterinary Science, Medical Therapy, Mechanical Technology, Physiotherapy, Radiology, Computer Science, Aviation, Architecture, Surveying or Teaching.

Who can I speak to about this course?

Any member of the Science faculty.

Frequently Asked Questions about this course?

Should I be doing a mathematics course? This course does require you to have a good understanding of Maths. It is recommended that you study at least Mathematics.

What other subjects are related to Physics? Mathematics and Extension 1 Mathematics cover concepts explored in Physics.

What if I don't want to go to University? Studying Physics successfully can lead to future advantages at TAFE. You can transfer credit to the following courses: Mechanical Engineering, Associate Diploma, Electrical Assoc. Dip., Industrial Engineering Cert., Building Assoc. Dip.

SOFTWARE DESIGN and DEVELOPMENT

Board Endorsed Course	<input checked="" type="checkbox"/>	Category A	<input checked="" type="checkbox"/>	HSC	<input checked="" type="checkbox"/>	1 Unit	<input checked="" type="checkbox"/>
Content Endorsed Course	<input checked="" type="checkbox"/>	Category B	<input checked="" type="checkbox"/>	ATAR	<input checked="" type="checkbox"/>	2 Unit	<input checked="" type="checkbox"/>

Course contribution: Nil

What is this course about?



From creating games for entertainment and education to discovering the processes involved in the development of any software product, this course will allow you to build coding skills and a general understanding of project management. The HSC course furthers the Year 11 course and asks students to develop their own software. Through this you will learn to solve interesting and relevant software problems.

Who should pick this course?

Students who have a keen interest in computer programming and coding, designing software and/or a desire to study further in this field or obtain work in the IT Industry.

Where could this course lead?

Careers in the IT Industry, such as Game Development, Software Engineering and Programming and Engineering. Past students have commented how the knowledge learnt has made their first year at university in several degrees much easier. Many have commented how this course was extremely valuable in first year studies in such courses as Engineering and Computer Science.

Who can I speak to about this course?

Mrs Chapman-Hardy or Mr Eaton

Frequently Asked Questions about this course?

Will I get to design software? Yes. You will be able to complete several interesting software projects in both the Year 11 and HSC years.

Can I study other computer courses at the same time? Yes. You can study SDD and / or IPT and / or IT Multimedia and / or IDT VET.

Do I need to have studied any computing courses in the junior school? No. All levels of entry are catered for. Many students who have never studied computers in the junior school have achieved excellent results in this course.

What software will be used in the course? Students mostly use Visual Studio 2012 and Python, however, students may code in any programming language if they have the appropriate knowledge.

SOCIETY and CULTURE

Board Endorsed Course	<input checked="" type="checkbox"/>	Category A	<input checked="" type="checkbox"/>	HSC	<input checked="" type="checkbox"/>	1 Unit	<input checked="" type="checkbox"/>
Content Endorsed Course	<input checked="" type="checkbox"/>	Category B	<input checked="" type="checkbox"/>	ATAR	<input checked="" type="checkbox"/>	2 Unit	<input checked="" type="checkbox"/>

Course contribution: Nil



What is this course about?

Ever wondered why people are like they are – or do what they do? Society and Culture develops the skills and knowledge to understand what is happening in the world around you. Starting from personal experience, you will study how society, culture, people, environment and time interact. Topics you can study are as diverse as Social Theory, Television, Adolescence, Cross-Cultural Communication and World Ideologies and Beliefs. You will also learn how to be a social researcher – a key employment skill.

In the HSC course, students complete a Personal Interest Project (the P.I.P.) on a topic of your interest. This project is in-depth and a great deal of it is to be completed in your own time.

Who should pick this course?

This course is suited to students who are confident essay writers and who can plan well in advance, particularly due to the nature of the Personal Interest Project. Students who have an interest in Australian Society and their own lives and social situations will find the course enjoyable.

Where could this course lead?

Society and Culture is a course drawing largely on the area of sociology for its content and methods. The course is designed to equip students with the relevant knowledge and skills required for their social needs in the future – in other words to become ‘socially and culturally literate’. The general knowledge, study methods and skills developed in this course should also provide an excellent background for those undertaking tertiary studies in any of the humanities subjects.

Who can I speak to about this course?

Mrs Zok and Mrs Anderson.

Frequently Asked Questions about this course?

Do I need to write essays or extended responses? Yes, this subject does have exams and tasks that require an extended response or essay. There will be plenty of support to help students develop their writing skills.

Will there be any major research projects? Yes, in Year 12 there is a Personal Interest Project (P.I.P.) on a topic chosen by the students, with the support of the teacher. This will allow students to apply skills they have developed in a practical task. This major work is worth 40% of the final mark and is externally marked.

VISUAL ARTS

Board Endorsed Course	<input checked="" type="checkbox"/>	Category A	<input checked="" type="checkbox"/>	HSC	<input checked="" type="checkbox"/>	1 Unit	<input checked="" type="checkbox"/>
Content Endorsed Course	<input checked="" type="checkbox"/>	Category B	<input checked="" type="checkbox"/>	ATAR	<input checked="" type="checkbox"/>	2 Unit	<input checked="" type="checkbox"/>

Course contribution: Year 11 - \$55; Year 12 - \$55



What is this course about?

Visual Arts is a course where both students who are academically orientated and creative, and those who just enjoy expressing and creating their own ideas, can achieve their personal best. The course is 50% practical and 50% theory. You will explore and learn about the process of how to develop an idea into an artwork that will have layers of meaning for an audience to interpret and you will learn how to interpret the meaning of other artist's works. At the end of the course you will have a Body of Work involving a number of pieces, to exhibit to family and friends and submit for marking.

Who should pick this course?

If you are keen to develop your artistic practical skills and you're imaginative, creative and love to work individually on your own ideas with help from the teacher, and are interested in how other artists develop their ideas and their artworks, you will enjoy Visual Arts. You need to be aware that that half of the course is the development of your own work and half this course is the study of other artists' work.

Where could this course lead?

The study of Visual Arts allows students to learn about the relationships between the artist and their artwork, the audience and reactions to their artwork and how that artwork reflects the world the artist works in. You will also learn the practical skills you need to create your own works. Visual Arts suits students who want to go to university as well as students who want to go TAFE. Some of the areas that Visual Art students work in are: practicing artists, teachers, graphic designers, film and video makers, advertising, architecture and web design.

Who can I speak to about this course?

Ms Benton, Mrs Cox.

Frequently Asked Questions about this course?

Can I do this course if I did not study art in year 9 and 10? Yes, you will need to revise some of the terms and language used but you will be able to do the year 11 course. If you are interested and well organised you will have every chance of success.

Do I have to study both practical and theory parts of the course? Yes. This course is the study of both practical and theory. 50% of your time is devoted to artmaking and 50% of your time will be studying critical and historical content.

Content Endorsed Courses

The following pages provide details on the Content Endorsed Courses offered at Maitland high School in 2020.

Remember, CECs count towards your HSC, but they do not qualify or count towards an ATAR to go to university.

COMPUTER APPLICATIONS

Board Endorsed Course	<input checked="" type="checkbox"/>	Category A	<input checked="" type="checkbox"/>	HSC	<input checked="" type="checkbox"/>	1 Unit	<input checked="" type="checkbox"/>
Content Endorsed Course	<input checked="" type="checkbox"/>	Category B	<input checked="" type="checkbox"/>	ATAR	<input checked="" type="checkbox"/>	2 Unit	<input checked="" type="checkbox"/>

Course contribution: Year 11 - \$25; Year 12 - \$25



What is this course about?



Computing Applications is a 'hands-on', skills-based course aimed at developing the students' abilities to use hardware and software to complete a range of practical tasks. Students will be able to develop skills in word processing, graphics presentation, publishing and design software; skills that are sought-after by many employers.

Students will develop their knowledge and understanding of the role of computing by completing tasks that enable them to be more confident users of the technology.

Who should pick this course?

Students who want to develop sound computing skills and do not want an ATAR, are interested in using new technologies found in the workplace and/or want to develop a sound practical computer skill-base. Students preparing for employment with little practical experience in using computers

Where could this course lead?

Further study in computing-based courses at TAFE. Employment in industries where practical computing skills are desired.

Who can I speak to about this course?

Mrs Chapman-Hardy, Mr Noble, Mr Eaton.

Frequently Asked Questions about this course?

Is there a HSC examination in this subject? No. This course is school-based assessment.

Should I pick this course if I want an ATAR? No. If you want to develop your computing skills and knowledge and you want an ATAR then you should pick Industrial Technology, Information Processes and Technology and/or Software Design and Development.

Will I learn practical computing skills? Yes. This course is primarily practical. You will undertake a variety of skill based exercises to improve your knowledge and skills in a variety of areas.

EXPLORING EARLY CHILDHOOD

Board Endorsed Course	<input checked="" type="checkbox"/>	Category A	<input checked="" type="checkbox"/>	HSC	<input checked="" type="checkbox"/>	1 Unit	<input checked="" type="checkbox"/>
Content Endorsed Course	<input checked="" type="checkbox"/>	Category B	<input checked="" type="checkbox"/>	ATAR	<input checked="" type="checkbox"/>	2 Unit	<input checked="" type="checkbox"/>

Course contribution: Year 11 - \$17; Year 12 - \$17



What is this course about?

This course has a practical as well as a theoretical base. It involves a study of the physical, social, emotional, behavioural, cognitive and language development of young children. It identifies environmental factors that impact on growth and development.

Topics may include: Pregnancy and Childbirth, Growth and Development, Promoting Positive Behaviours, Learning Experiences for Young Children, Play and Developing Child, Starting School, Gender and Young Children, Children and Change, Children's Services, Food and Nutrition, Young Children with Special Needs, Child Health and Safety, Children's Literature, Young Children and the Law, Children of Aboriginal and Torres Strait Islander Communities, Young Children and Media.

Who should pick this course?

Students who are interested in a career in the Child Care industry. Students who want to further their studies in this area at TAFE (or later at university – this is a non-ATAR course and great care in selecting it should be exercised by any student wanting to gain entry to university following the HSC). Students who have a desire to work with children and students who want to develop knowledge and skills in some areas of parenting.

Where could this course lead?

Career options may include: Pre-school Teacher, Day Care Coordinator, Nursing, babysitting, Playgroup Coordinator, Nanny, Crèche Coordinator, overseas nanny or Child Psychologist. The course provides a good basis for pursuing further education in Child Studies at TAFE.

Who can I speak to about this course?

Mrs Howarth.

Frequently Asked Questions about this course?

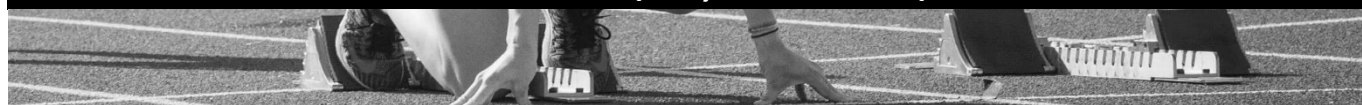
Do I have to have an HSC examination for this course? No. It is the student's assessment mark that is recorded on the HSC. This is comprised of exams and including a variety of written and practical tasks – 50% knowledge, 50% skills.

What does the course contribution cover? This covers costs of practical materials and the use of the electronic simulation baby.

SPORT, LIFESTYLE and RECREATION

Board Endorsed Course	<input checked="" type="checkbox"/>	Category A	<input checked="" type="checkbox"/>	HSC	<input checked="" type="checkbox"/>	1 Unit	<input checked="" type="checkbox"/>
Content Endorsed Course	<input checked="" type="checkbox"/>	Category B	<input checked="" type="checkbox"/>	ATAR	<input checked="" type="checkbox"/>	2 Unit	<input checked="" type="checkbox"/>

Course contribution: Year 11 - \$85; Year 12 - \$85



What is this course about?

The importance of a healthy and active lifestyle, and developing skills and knowledge to enjoy such a lifestyle. Students are encouraged to establish a lifelong commitment to being physically active.

Who should pick this course?

Students who enjoy being active, involved in practical activities and have an interest and aptitude for a range of sport and recreational pursuits.

Where could this course lead?

Students who enjoy being active, involved in practical activities and have an interest and aptitude for a range of sport and recreational pursuits.

Who can I speak to about this course?

Any member of the PDHPE faculty, careers adviser, community members employed in related industries.

Frequently Asked Questions about this course?

Is there any theory work to be studied? Yes, there are equal hours dedicated to theory and practical work. For example, in the Sports Coaching unit the students learn how to coach a session, and then they physically coach a class.

Can you do PDHPE and Sport, Lifestyle and Recreation Studies (SLR)? Yes. If a student wants an ATAR they must choose the 2 Unit PDHPE subject.

What is the difference between SLR and PDHPE? The PDHPE course is educationally demanding and apart from theory related practical opportunities, does not provide students with the type of physical activity that they have enjoyed in Physical Education lessons in the junior school. If you enjoyed PE, and want to continue to have the opportunity to be physically active in a subject area, then SLR is for you.

What are some of the topics studied in SLR? Units include such topics as team and individual games, aquatics, athletics, outdoor recreation, coaching principles, sports administration, fitness studies and first aid.

VISUAL DESIGN

Board Endorsed Course	<input checked="" type="checkbox"/>	Category A	<input checked="" type="checkbox"/>	HSC	<input checked="" type="checkbox"/>	1 Unit	<input checked="" type="checkbox"/>
Content Endorsed Course	<input checked="" type="checkbox"/>	Category B	<input checked="" type="checkbox"/>	ATAR	<input checked="" type="checkbox"/>	2 Unit	<input checked="" type="checkbox"/>

Course contribution: Year 11 - \$50; Year 12 - \$50

What is this course about?

This course provides students with opportunities to develop practical skills and explore the representation of ideas in a range of fields, which include, Graphic Design, Digital Media, Product Design and Ceramics, Illustration. The course is 70% practical (Designing and making) and 30% theory (Critical and Historical Studies).

Who should pick this course?

If you are a creative person who enjoys working and learning across a range of creative fields. If you are innovative and enjoy developing your ideas into products, designs or artworks. There are a number of practical modules across the Year 11 course that develop skills and expose students to a range of practical techniques. The HSC individual project extends students learning experiences and may reflect their interests to specialise in one or more of the design fields.

Where could this course lead?

Visual Design provides challenging and engaging work opportunities for students in a variety of fields such as, graphic, interior, wearable, theatre and product design; visual merchandising and advertising. Visual Design also provides students with knowledge and skills that form a valuable foundation for a range of courses at University and TAFE.

Who can I speak to about this course?

Ms Benton, Mrs Cox, Mrs Ryan and Mrs Flaherty.

Frequently Asked Questions about this course?

Is this course the same as Visual Arts? No. This course is specifically about Visual Design and developing a folio of designs and works rather than a Body of Work. The visual Arts course is 50% artmaking and 50% Critical and Historical.

Is there a major work or project involved? Students develop an individual design project/s in a desired field of design along with a visual portfolio

WORK STUDIES

Board Endorsed Course	<input checked="" type="checkbox"/>	Category A	<input checked="" type="checkbox"/>	HSC	<input checked="" type="checkbox"/>	1 Unit	<input checked="" type="checkbox"/>
Content Endorsed Course	<input checked="" type="checkbox"/>	Category B	<input checked="" type="checkbox"/>	ATAR	<input checked="" type="checkbox"/>	2 Unit	<input checked="" type="checkbox"/>

Course contribution:



What is this course about?

The Work Studies syllabus is designed to assist students in their transition from school to work. It develops knowledge and understanding of the issues faced by students in the transition to work and the skills needed for effective career planning and performance of tasks in the work environment.

Who should pick this course?

Work Studies is very suitable for students who want to get a job as soon as possible as it will assist them in this process and increase their understanding of the workplace. Students will also be given the opportunity to undertake some extra work experience before they leave school. Students needing support with career planning, resume writing and interview skills are encouraged to choose this course.

Where could this course lead?

Students will be able to better prepare for the workplace by obtaining some of the necessary skills such as writing a letter of application for a job, preparing for an interview and gaining access to some outside agencies for support.

Who can I speak to about this course?

Mrs Matthews

Frequently Asked Questions about this course?

Do we get to complete work experience as part of this course? Yes, work experience is one of the modules in this course and students can choose to complete extra work experience depending on their needs.

Will this course enable me to get some qualifications by doing some courses? Yes, depending on student interest, classes in the past have completed WHS courses and a First Aid course as well as other opportunities to learn practical tasks.

VET Courses

It is advised that students should not undertake more than two (2) VET Courses.

VET Curriculum Frameworks

NESA has developed curriculum frameworks for a variety of industries. No more than one designated 240-hour course in each framework will contribute towards the ATAR.

You must undertake a mandatory work placement to complete these courses successfully.

The frameworks offered at Maitland High School are:

- Business Services
- Construction
- Hospitality
- Metal and Engineering
- Retail Services

BSB20115 Certificate II in Business (BSB release 2.0)

Statement of Attainment towards BSB20115 Certificate II in Business (BSB release 2.0)

2020 STAGE 6 COURSE DESCRIPTION – BUSINESS SERVICES

This Course is available as	2Unit x 1year/120 hours	2Unit x 2years/240 hours	4Unit x 1year/240 hours
<i>The volume of learning usually includes 240 indicative hours and a minimum of 70 hours of work placement. All activities that the learner is required to be engaged in to complete this course are conducted under supervision.</i>			
<i>Our RTO is committed to providing high quality training to students. Please discuss course patterns with your school.</i>			

Board Developed Course	Category B status for Australian Tertiary Admission Rank (ATAR)
This curriculum framework includes courses which are accredited for the HSC and provides students with the opportunity to obtain nationally recognised vocational qualifications. This is known as dual accreditation.	
Course description - This course is designed for students who wish to develop knowledge and skills to commence a career and be an effective employee in the business administration and support industry. Students who are assessed as competent in sufficient of the above units will be eligible for a full Certificate qualification; partial completion will lead to a Statement of Attainment. Qualification pathway information is available from the Australian Apprenticeships Training Information Service :	

Course structure: The following content will be addressed as part of this Qualification. Reduced or modified patterns of delivery may target specific units of competency. <i>Please discuss units of competency with your school.</i>			
Compulsory/Core Units – HSC Examinable		Elective Units	
BSBWHS201	Contribute to health and safety of self and others	BSBWOR202	Organise and complete daily work activities
BSBCUS201	Deliver a service to customers	BSBWOR203	Work effectively with others
BSBIND201	Work effectively in a business environment	BSBINM202	Handle mail
BSBINM201	Process and maintain workplace information	BSBITU201	Produce simple word processed documents
TLIP2029	Prepare and process financial documents	BSBITU202	Create and use spreadsheets
BSBSUS201	Participate in environmentally sustainable work practices	BSBWOR204	Use business technology
BSBINN201	Contribute to workplace innovation	BSBITU307	Develop keyboarding speed and accuracy
		BSBCMM201	Communicate in the workplace
Course contribution (to be made directly to school): \$20 Course contributions are made to cover the ongoing costs of consumables and materials used as part of this course. <i>If you are unable to make contributions or are experiencing financial difficulty, please contact your school.</i>			
Refunds: Students who exit the course before completion may be eligible for a partial refund of fees. The amount of the refund will be pro-rata, dependent upon the time the student has been enrolled in the course. <i>Please discuss any matters relating to refunds with your school</i>			
Course specific resources and equipment: Due to the specific nature of training and assessment in this industry area, the following specific resources and equipment are required of students undertaking this course. <i>Please discuss with your school if you are unable to, or have difficulty meeting these requirements.</i>		<ul style="list-style-type: none">Students will be required to complete 2 x 35 hour work placements.	
Exclusions: VET course exclusions can be checked on the NESA website at www.boardofstudies.nsw.edu.au/voc_ed/exclusions.html .			

Assessment and course completion Competency-based assessment Students in this course work to develop the competencies, skills and knowledge described by each unit of competency. To be assessed as competent a student must demonstrate that they can effectively carry out tasks to industry standard. Students will be progressively assessed as 'competent' or 'not yet competent' in individual units of competency. Students may apply for Recognition of Prior Learning provided suitable evidence of competency is submitted. Credit Transfer and Recognition of Prior Learning (RPL) Our RTO acknowledges the experience and prior learning of our students. Students who are able to present transcripts from other Australian RTOs or who are able to present relevant experiences in work may qualify for Credit Transfer (CT) or Recognition of Prior Learning. All applications for CT or RPL should be made to the course teacher. Mandatory Work Placement

Students undertaking this course are required to complete work placement to a minimum hours as specified below. Work placement involves the student completing real work experiences in industry settings. In some courses, in-school events may contribute to mandatory work placement hours. Where this is possible, students will be fully informed upon enrolment.

- 2 Unit x 1 year courses: 35 hours
- 2 Unit x 2 years courses: 70 hours
- 4 Units x 1 year courses 70 hours
- Some Specialisation Courses may require additional work placement

Optional HSC examination

Students completing this course are eligible to sit an optional, written HSC examination. The purpose of the examination is to provide a mark which may be used in the calculation of the ATAR. The examination is independent of the competency-based assessment undertaken during the course and has no impact on the eligibility to receive an AQF VET qualification.

Specialisation studies

Students may be offered the opportunity to undertake additional units of competency and credit towards their qualifications via Specialisation Studies. Information will be made available to students where appropriate.

N Determinations

Where a student has not met NSW Education Standards Authority (NESA) course completion criteria, (including meeting work placement requirements), they may receive an 'N' award warning (course not satisfactorily completed). Students issued with an 'N' award warning will be issued with a rectification which must be completed. Students who receive more than 2 N awards may be at risk of not completing NESA requirements and may not be awarded the appropriate units of credit towards their HSC. Any unit of competency achieved will be awarded as part of the VET qualification.

Appeals

Students may lodge appeals against assessment decisions or 'N' determinations through their school.

Qualification changes and updates

Due to the dynamic nature of VET, qualifications may change during the course of study. The RTO will ensure that students are fully informed of these changes and may transition students to the latest qualification during the course. The RTO will ensure that any change will be made with a minimum of disruption.

Foundation skills:

Foundation skills are the underpinning communication skills required for participation in the workplace, the community and in adult education and training. Language, literacy and numeracy, or LLN, is the traditional way of referring to the ability to speak, listen, read and write in English, and to use mathematical concepts.

School-based Apprenticeships and Traineeships (SBATs)

A school-based traineeship is available in this course.

To express an interest or obtain further information go to <http://northernnsw.startmytrade.com.au/>

Your school SBAT Coordinator, Careers Advisor, VET Coordinator or VET Teacher is available to discuss apprenticeship and traineeships as part of your HSC.

By enrolling in a VET qualification in NSW Public Schools Tamworth RTO 90162, you are choosing to participate in a program of study that will give you the best possible direction towards a nationally recognised qualification. You will be expected to complete assessments relevant to the qualification and adhere to the requirements of the NSW Education Standards Authority (NESA).

CPC20211 Certificate II in Construction Pathways (Release 3) (CPC08 release V9.1)

Statement of Attainment towards CPC20211 Certificate II in Construction Pathways (CPC08 release V9.1)

2020 STAGE 6 COURSE DESCRIPTION – CONSTRUCTION

This Course is available as	2Unit x 1year/120 hours	2Unit x 2years/240 hours	4Unit x 1year/240 hours
<i>The volume of learning usually includes 240 indicative hours and a minimum of 70 hours of work placement. All activities that the learner is required to be engaged in to complete this course are conducted under supervision.</i>			
<i>Our RTO is committed to providing high quality training to students. Please discuss course patterns with your school.</i>			

Board Developed Course	Category B status for Australian Tertiary Admission Rank (ATAR)
This curriculum framework includes courses which are accredited for the HSC and provides students with the opportunity to obtain nationally recognised vocational qualifications. This is known as dual accreditation.	
Course description - This course is designed for students who wish to develop knowledge and skills to commence a career and be an effective employee in the construction industry. Students who are assessed as competent in sufficient units of competency will be eligible for a full Certificate qualification; partial completion will lead to a Statement of Attainment. Qualification pathway information is available from the Australian Apprenticeships Training Information Service :	

Course structure: The following content will be addressed as part of this Qualification. Reduced or modified patterns of delivery may target specific units of competency. <i>Please discuss units of competency with your school.</i>			
Compulsory/Core Units – HSC Examinable		Students may study a selection of the following elective units.	
CPCCCM1012A	Work effectively and sustainably in the construction industry	CPCCCA2011A	Handle carpentry materials
CPCCCM1013A	Plan and organise work	CPCCCA2002B	Use carpentry tools and equipment
CPCCCM1014A	Conduct workplace communication	CPCCJN2001A	Assemble components
CPCCCM1015A	Carry out measurements and calculations	CPCCJN2002B	Prepare for off-site manufacturing processes
CPCCCM2001A	Read and interpret plans and specifications	CPCCWF2001A	Handle wall and floor tiling materials
CPCCOHS2001A	Apply OHS requirements, policies and procedures in the construction industry	CPCCWF2002A	Use wall and floor tiling tools and equipment
CPCCOHS1001A	Work safely in the construction industry	CPCCCM2006B	Apply basic levelling procedures
CPCCCM2005B	Use construction tools and equipment	CPCCBL2001A	Handle and prepare bricklaying and blocklaying materials
		CPCCBL2002A	Use bricklaying and blocklaying tools & equipment
		CPCCCO2013A	Carry out concreting to simple forms
		CPCCCA2003A	Erect and dismantle formwork for foots and slabs on ground
<p>Course contribution (to be made directly to school): \$40 materials and \$20 work booklet (Year 11) + Apron (approx. \$12) and \$40 materials and \$20 work booklet (HSC)</p> <p>Hi Vis shirt, pant and steel-cap boot purchase kit approx. \$100.00 (to be ordered through MHS). Students can wear these during practical lessons and possibly to work placements.</p> <p>Course contributions are made to cover the ongoing costs of consumables and materials used as part of this course. <i>If you are unable to make contributions or are experiencing financial difficulty, please contact your school.</i></p> <p>Refunds: Students who exit the course before completion may be eligible for a partial refund of fees. The amount of the refund will be pro-rata, dependent upon the time the student has been enrolled in the course. <i>Please discuss any matters relating to refunds with your school</i></p>			

<p>Course specific resources and equipment:</p> <p>Due to the specific nature of training and assessment in this industry area, the following specific resources and equipment are required of students undertaking this course. <i>Please discuss with your school if you are unable to, or have difficulty meeting these requirements.</i></p>	<ul style="list-style-type: none"> • PPE MUST be worn to every lesson including enclosed leather shoes, hair tied back and protective eye wear.
<p>Exclusions:</p> <p>VET course exclusions can be checked on the Board's website at www.boardofstudies.nsw.edu.au/voc_ed/exclusions.html.</p>	
<p>Assessment and course completion</p> <p>Competency-based assessment</p> <p>Students in this course work to develop the competencies, skills and knowledge described by each unit of competency. To be assessed as competent a student must demonstrate that they can effectively carry out tasks to industry standard. Students will be progressively assessed as 'competent' or 'not yet competent' in individual units of competency. Students may apply for Recognition of Prior Learning provided suitable evidence of competency is submitted.</p> <p>Credit Transfer and Recognition of Prior Learning (RPL)</p> <p>Our RTO acknowledges the experience and prior learning of our students. Students who are able to present transcripts from other Australian RTOs or who are able to present relevant experiences in work may qualify for Credit Transfer (CT) or Recognition of Prior Learning. All applications for CT or RPL should be made to the course teacher.</p> <p>Mandatory Work Placement</p> <p>Students undertaking this course are required to complete work placement to a minimum hours as specified below. Work placement involves the student completing real work experiences in industry settings. In some courses, in-school events may contribute to mandatory work placement hours. Where this is possible, students will be fully informed upon enrolment.</p> <ul style="list-style-type: none"> • 2 Unit x 1 year courses: 35 hours • 2 Unit x 2 years courses: 70 hours • 4 Units x 1 year courses 70 hours • Some Specialisation Courses may require additional work placement <p>Optional HSC examination</p> <p>Students completing this course are eligible to sit an optional, written HSC examination. The purpose of the examination is to provide a mark which may be used in the calculation of the ATAR. The examination is independent of the competency-based assessment undertaken during the course and has no impact on the eligibility to receive an AQF VET qualification.</p> <p>Specialisation studies</p> <p>Students may be offered the opportunity to undertake additional units of competency and credit towards their qualifications via Specialisation Studies. Information will be made available to students where appropriate.</p> <p>N Determinations</p> <p>Where a student has not met NSW Education Standards Authority (NESA) course completion criteria, (including meeting work placement requirements), they may receive an 'N' award warning (course not satisfactorily completed). Students issued with an 'N' award warning will be issued with a rectification which must be completed. Students who receive more than 2 N awards may be at risk of not completing NESA requirements and may not be awarded the appropriate units of credit towards their HSC. Any unit of competency achieved will be awarded as part of the VET qualification.</p> <p>Appeals</p> <p>Students may lodge appeals against assessment decisions or 'N' determinations through their school.</p> <p>Qualification changes and updates</p> <p>Due to the dynamic nature of VET, qualifications may change during the course of study. The RTO will ensure that students are fully informed of these changes and may transition students to the latest qualification during the course. The RTO will ensure that any change will be made with a minimum of disruption.</p>	
<p>Employability skills:</p> <p>There are eight Employability Skills: communication, teamwork, problem solving, initiative and enterprise, planning and organising, self-management, learning and technology. A summary of the employability skills developed through this qualification can be downloaded from http://employabilityskills.training.com.au/</p>	
<p>School-based Apprenticeships and Traineeships (SBATs)</p> <p>A school-based traineeship is available in this course.</p> <p>To express an interest or obtain further information go to http://www.sbatjobs.info/</p> <p>Your school SBAT Coordinator, Careers Advisor, VET Coordinator or VET Teacher is available to discuss apprenticeship and traineeships as part of your HSC.</p>	

By enrolling in a VET qualification in NSW Public Schools Tamworth RTO 90162, you are choosing to participate in a program of study that will give you the best possible direction towards a nationally recognised qualification. You will be expected to complete assessments relevant to the qualification and adhere to the requirements of the NSW Education Standards Authority (NESA).

SIT20316 Certificate II in Hospitality (SIT12 release 2)*
Statement of Attainment towards SIT20316 Certificate II in Hospitality (SIT12 release 2)*

2020 STAGE 6 COURSE DESCRIPTION – HOSPITALITY

This Course is available as	2Unit x 1year/120 hours	2Unit x 2years/240 hours	4Unit x 1year/240 hours
<i>The volume of learning usually includes 240 indicative hours and a minimum of 70 hours of work placement. All activities that the learner is required to be engaged in to complete this course are conducted under supervision.</i>			
<i>Our RTO is committed to providing high quality training to students. Please discuss course patterns with your school.</i>			

Board Developed Course	Category B status for Australian Tertiary Admission Rank (ATAR)
This curriculum framework includes courses which are accredited for the HSC and provides students with the opportunity to obtain nationally recognised vocational qualifications. This is known as dual accreditation.	
Course description - This course is designed for students who wish to develop knowledge and skills to commence a career and be an effective employee in the hospitality & customer service industry. Students who are assessed as competent in sufficient units of competency will be eligible for a full Certificate qualification; partial completion will lead to a Statement of Attainment. Qualification pathway information is available from the Australian Apprenticeships Training Information Service :	

Course structure: The following content will be addressed as part of this Qualification. Reduced or modified patterns of delivery may target specific units of competency. <i>Please discuss units of competency with your school.</i>			
Compulsory/Core Units – HSC Examinable		Elective Units	
SITHIND003	Use Hospitality skills effectively	SITHCCC002	Prepare and present simple dishes
SITXCOM002	Show social and cultural sensitivity	SITHCC006	Prepare appetisers and salads
SITXCCS003	Interact with customers	SITHCCC001	Use food preparation equipment
BSBWOR203	Work effectively with others	SITHIND002	Source and use information on the hospitality industry
SITXWHS001	Participate in safe work practices		
SITHIND002	Source and use information on the hospitality industry		
SITXFSA001	Use hygienic practices for food safety		
SITHFAB004	Prepare and serve non-alcoholic beverages		
SITHFAB007	Serve food and beverage		
SITHFAB005	Prepare and serve espresso coffee		
Course contribution (to be made directly to school):		Year 11	HSC
Food Costs:		\$70	\$40
Uniform Purchase& Booklets		\$50	\$25
Course requirements: <ul style="list-style-type: none"> Personal Protective Equipment (PPE) as determined by school, for example: <ul style="list-style-type: none"> Compulsory MHS school logo black polo shirt (ordered from school – included in contributions) black long pants Compulsory fully enclosed black leather shoes (flat, non-slip) <p>Course contributions are made to cover the ongoing costs of consumables and materials used as part of this course. <i>If you are unable to make contributions or are experiencing financial difficulty, please contact your school.</i></p> <p>Refunds: Students who exit the course before completion may be eligible for a partial refund of fees. The amount of the refund will be pro-rata, dependent upon the time the student has been enrolled in the course. <i>Please discuss any matters relating to refunds with your school</i></p>			
Course specific resources and equipment: Due to the specific nature of training and assessment in this industry area, the following specific resources and equipment are required of students undertaking this course. <i>Please discuss with your school if you are unable to, or have difficulty meeting these requirements.</i>		PPE MUST be worn to every lesson including enclosed leather shoes, wear black pants (not tights) and hospitality work shirt as well as have hair tied back.	

Exclusions: VET course exclusions can be checked on the Board's website at www.boardofstudies.nsw.edu.au/voc_ed/exclusions.html.

Assessment and course completion

Competency-based assessment

Students in this course work to develop the competencies, skills and knowledge described by each unit of competency. To be assessed as competent a student must demonstrate that they can effectively carry out tasks to industry standard. Students will be progressively assessed as 'competent' or 'not yet competent' in individual units of competency. Students may apply for Recognition of Prior Learning provided suitable evidence of competency is submitted.

Credit Transfer and Recognition of Prior Learning (RPL)

Our RTO acknowledges the experience and prior learning of our students. Students who are able to present transcripts from other Australian RTOs or who are able to present relevant experiences in work may qualify for Credit Transfer (CT) or Recognition of Prior Learning. All applications for CT or RPL should be made to the course teacher.

Mandatory Work Placement

Students undertaking this course are required to complete work placement to a minimum hours as specified below. Work placement involves the student completing real work experiences in industry settings. In some courses, in-school events may contribute to mandatory work placement hours. Where this is possible, students will be fully informed upon enrolment.

- 2 Unit x 1 year courses: 35 hours
- 2 Unit x 2 years courses: 70 hours
- 4 Units x 1 year courses 70 hours
- Some Specialisation Courses may require additional work placement

Optional HSC examination

Students completing this course are eligible to sit an optional, written HSC examination. The purpose of the examination is to provide a mark which may be used in the calculation of the ATAR. The examination is independent of the competency-based assessment undertaken during the course and has no impact on the eligibility to receive an AQF VET qualification.

Specialisation studies

Students may be offered the opportunity to undertake additional units of competency and credit towards their qualifications via Specialisation Studies. Information will be made available to students where appropriate.

N Determinations

Where a student has not met NSW Education Standards Authority (NESA) course completion criteria, (including meeting work placement requirements), they may receive an 'N' award warning (course not satisfactorily completed). Students issued with an 'N' award warning will be issued with a rectification which must be completed. Students who receive more than 2 N awards may be at risk of not completing NESA requirements and may not be awarded the appropriate units of credit towards their HSC. Any unit of competency achieved will be awarded as part of the VET qualification.

Appeals

Students may lodge appeals against assessment decisions or 'N' determinations through their school.

Qualification changes and updates

Due to the dynamic nature of VET, qualifications may change during the course of study. The RTO will ensure that students are fully informed of these changes and may transition students to the latest qualification during the course. The RTO will ensure that any change will be made with a minimum of disruption.

Employability skills:

There are eight Employability Skills: communication, teamwork, problem solving, initiative and enterprise, planning and organising, self-management, learning and technology. A summary of the employability skills developed through this qualification can be downloaded from <http://employabilityskills.training.com.au/>

School-based Apprenticeships and Traineeships (SBATs)

A school-based traineeship is available in this course.

To express an interest or obtain further information go to <http://www.sbatjobs.info/>

Your school SBAT Coordinator, Careers Advisor, VET Coordinator or VET Teacher is available to discuss apprenticeship and traineeships as part of your HSC.

By enrolling in a VET qualification in NSW Public Schools Tamworth RTO 90162, you are choosing to participate in a program of study that will give you the best possible direction towards a nationally recognised qualification. You will be expected to complete assessments relevant to the qualification and adhere to the requirements of the NSW Education Standards Authority (NESA).

MEM10105 Certificate I in Engineering (MEM05 release 11.1)

Statement of Attainment towards MEM10105 Certificate I in Engineering (MEM05 release 11.1)

2020 STAGE 6 COURSE DESCRIPTION – METAL AND ENGINEERING

This Course is available as	2Unit x 1year/120 hours	2Unit x 2years/240 hours	4Unit x 1year/240 hours
<i>The volume of learning usually includes 240 indicative hours and a minimum of 70 hours of work placement. All activities that the learner is required to be engaged in to complete this course are conducted under supervision.</i>			
<i>Our RTO is committed to providing high quality training to students. Please discuss course patterns with your school.</i>			

Board Developed Course	Category B status for Australian Tertiary Admission Rank (ATAR)
This curriculum framework includes courses which are accredited for the HSC and provides students with the opportunity to obtain nationally recognised vocational qualifications. This is known as dual accreditation.	
Course description - This course is designed for students who wish to develop knowledge and skills to commence a career and be an effective employee in the engineering and manufacturing industry. Students who are assessed as competent in sufficient units of competency will be eligible for a full Certificate qualification; partial completion will lead to a Statement of Attainment. Qualification pathway information is available from the Australian Apprenticeships Training Information Service :	

Course structure: The following content will be addressed as part of this Qualification. Reduced or modified patterns of delivery may target specific units of competency. <i>Please discuss units of competency with your school.</i>			
Compulsory/Core Units – HSC Examinable		Possible Elective Units – teacher will advise	
MEM16007A	Work with others in a manufacturing, engineering or related environment	MEM03003B	Perform sheet and plate assembly
MEM12023A	Perform engineering measurements	MEM05004C	Perform routine oxy-acetylene welding
MEM13014A	Apply principles of occupational health and safety in the work environment	MEM05003B	Perform Soft Soldering
MEM12024A	Perform computations	MEM03001B	Perform manual production assembly
MEM14004A	Plan to undertake a routine task		
MEM15002A	Apply quality systems		
MEM15024A	Apply quality procedures		
MEM18001C	Use hand tools		
MEM18002B	Use power tools/hand held operations		
Students will also complete additional HSC content to fulfil the NSW BOSTES syllabus/examinable requirements for this course			
Course contribution (to be made directly to school): \$60 materials and \$20 work booklet (Year 11) + Apron (approx. \$12) and \$60 materials and \$20 work booklet (HSC)			
Student Hi Vis shirt, pant and steel-cap boot purchase kit approx. \$100.00 (to be ordered through MHS). Students can wear These during practical lessons and possibly to work placements. Course contributions are made to cover the ongoing costs of consumables and materials used as part of this course. <i>If you are unable to make contributions or are experiencing financial difficulty, please contact your school.</i>			
Refunds: Students who exit the course before completion may be eligible for a partial refund of fees. The amount of the refund will be pro-rata, dependent upon the time the student has been enrolled in the course. <i>Please discuss any matters relating to refunds with your school</i>			
Course specific resources and equipment: Due to the specific nature of training and assessment in this industry area, the following specific resources and equipment are required of students undertaking this course. <i>Please discuss with your school if you are unable to, or have difficulty meeting these requirements.</i>			<ul style="list-style-type: none">• PPE MUST be worn to every lesson including enclosed leather shoes, hair tied back and protective eye wear.

Exclusions:

VET course exclusions can be checked on the NESA website at

<https://educationstandards.nsw.edu.au/wps/portal/nesa/11-12/stage-6-learning-areas/vet/course-exclusions> **Enrolment in a Certificate I Engineering excludes you from studying Industrial Technology - Metals and Engineering focus area.**

Assessment and course completion**Competency-based assessment**

Students in this course work to develop the competencies, skills and knowledge described by each unit of competency. To be assessed as competent a student must demonstrate that they can effectively carry out tasks to industry standard. Students will be progressively assessed as 'competent' or 'not yet competent' in individual units of competency. Students may apply for Recognition of Prior Learning provided suitable evidence of competency is submitted.

Credit Transfer and Recognition of Prior Learning (RPL)

Our RTO acknowledges the experience and prior learning of our students. Students who are able to present transcripts from other Australian RTOs or who are able to present relevant experiences in work may qualify for Credit Transfer (CT) or Recognition of Prior Learning. All applications for CT or RPL should be made to the course teacher.

Mandatory Work Placement

Students undertaking this course are required to complete work placement to a minimum hours as specified below. Work placement involves the student completing real work experiences in industry settings. In some courses, in-school events may contribute to mandatory work placement hours. Where this is possible, students will be fully informed upon enrolment.

- 2 Unit x 1 year courses: 35 hours
- 2 Unit x 2 years courses: 70 hours
- 4 Units x 1 year courses 70 hours
- Some Specialisation Courses may require additional work placement

Optional HSC examination

Students completing this course are eligible to sit an optional, written HSC examination. The purpose of the examination is to provide a mark which may be used in the calculation of the ATAR. The examination is independent of the competency-based assessment undertaken during the course and has no impact on the eligibility to receive an AQF VET qualification.

Specialisation studies

Students may be offered the opportunity to undertake additional units of competency and credit towards their qualifications via Specialisation Studies. Information will be made available to students where appropriate.

N Determinations

Where a student has not met NSW Education Standards Authority (NESA) course completion criteria, (including meeting work placement requirements), they may receive an 'N' award warning (course not satisfactorily completed). Students issued with an 'N' award warning will be issued with a rectification which must be completed. Students who receive more than 2 N awards may be at risk of not completing NESA requirements and may not be awarded the appropriate units of credit towards their HSC. Any unit of competency achieved will be awarded as part of the VET qualification.

Appeals

Students may lodge appeals against assessment decisions or 'N' determinations through their school.

Qualification changes and updates

Due to the dynamic nature of VET, qualifications may change during the course of study. The RTO will ensure that students are fully informed of these changes and may transition students to the latest qualification during the course. The RTO will ensure that any change will be made with a minimum of disruption.

Employability skills:

There are eight Employability Skills: communication, teamwork, problem solving, initiative and enterprise, planning and organising, self-management, learning and technology. A summary of the employability skills developed through this qualification can be downloaded from <http://employabilityskills.training.com.au/>

School-based Apprenticeships and Traineeships (SBATs)

A school-based traineeship is available in this course.

To express an interest or obtain further information go to <http://www.sbatjobs.info/>

Your school SBAT Coordinator, Careers Advisor, VET Coordinator or VET Teacher is available to discuss apprenticeship and traineeships as part of your HSC.

By enrolling in a VET qualification in NSW Public Schools Tamworth RTO 90162, you are choosing to participate in a program of study that will give you the best possible direction towards a nationally recognised qualification. You will be expected to complete assessments relevant to the qualification and adhere to the requirements of the NSW Education Standards Authority (NESA).

SIR30216– Retail Services Training Package (Release 2.0)

Certificate III in Retail or Statement of Attainment

2020 STAGE 6 COURSE DESCRIPTION – RETAIL SERVICES

This Course is available as	2Units x 1year 120 Hour	2Units x 2 years 240 Hour	4Units x 1 year 240 hour
Participants in this program are all enrolled in the NSW Higher School Certificate (HSC) or Record of School Achievement (ROSA) which contributes to the volume of learning and the amount of training for this qualification. All activities that the learner is required to be engaged in to complete this course are conducted under supervision.			
<i>Our RTO is committed to providing high quality training to students. Please discuss course patterns with your school.</i>			

Board Developed Course	Category B status for Australian Tertiary Admission Rank (ATAR)
This course includes courses which are accredited for the HSC and provides students with the opportunity to obtain nationally recognised vocational qualifications. This is known as dual accreditation.	
Course description - This course is designed for students who wish to develop knowledge and skills to commence a career and be an effective employee in the retail services and customer service industry. Students who are assessed as competent in sufficient units of competency will be eligible for a full Certificate qualification; partial completion will lead to a Statement of Attainment. Qualification pathway information is available from https://www.aapathways.com.au/careers-for-australian-apprenticeships-traineesh/job-pathways	

Course structure: The course structure will be based on SIR30216			
Compulsory/Core Units Examinable*		HSC	Elective Units
	Units of competency		
SIRXCEG001	Engage the Customer	SIRRINV001	Receive and handle retail stock
SIRXCEG002	Assist with customer difficulties	SIRXSLS002	Follow point-of-sale handling procedures
SIRXCEG003	Build customer relationships and loyalty	SIRRMER001	Produce visual merchandise displays
SIRXCOM002	Work effectively in a team	SIRXPDK002	Advise on products and services
SIRXIND001	Work effectively in a service environment	SIRRRTF001	Balance and secure point-of-sale terminal
SIRXRSK001	Identify and respond to security risks	SIRXIND002	Organise and maintain the store environment
SIRXSLS001	Sell to the retail customer		
SIRXWHS002	Contribute to workplace health and safety		
Course contribution (to be made directly to school): \$20 Course contributions are made to cover the ongoing costs of consumables and materials used as part of this course. <i>If you are unable to make contributions or are experiencing financial difficulty, please contact your school.</i> Refunds: Students who exit the course before completion may be eligible for a partial refund of fees. The amount of the refund will be pro-rata, dependent upon the time the student has been enrolled in the course. <i>Please discuss any matters relating to refunds with your school</i>			
Course specific resources and equipment: Due to the specific nature of training and assessment in this industry area, the following specific resources and equipment are required of students undertaking this course. <i>Please discuss with your school if you are unable to, or have difficulty meeting these requirements.</i>		<ul style="list-style-type: none">Must be able to travel to Work placement for one week in Year 11 and one week in Year 12.	
Exclusions: VET course exclusions can be checked on the NESA website at http://educationstandards.nsw.edu.au/wps/portal/nesa/11-12/stage-6-learning-areas/vet/course-exclusions			

Assessment and course completion

Competency-based assessment

Students in this course work to develop the competencies, skills and knowledge described by each unit of competency. To be assessed as competent a student must demonstrate that they can effectively carry out tasks to industry standard. Students will be progressively assessed as 'competent' or 'not yet competent' in individual units of competency. Students may apply for Recognition of Prior Learning provided suitable evidence of competency is submitted.

Credit Transfer and Recognition of Prior Learning (RPL)

Our RTO acknowledges the experience and prior learning of our students. Students who are able to present transcripts from other Australian RTOs or who are able to present relevant experiences in work may qualify for Credit Transfer (CT) or Recognition of Prior Learning. All applications for CT or RPL should be made to the course teacher.

Mandatory Work Placement

Students undertaking this course are required to complete work placement to a minimum hours as specified below. Work placement involves the student completing real work experiences in industry settings. In some courses, in-school events may contribute to mandatory work placement hours. Where this is possible, students will be fully informed upon enrolment.

- 2 Units x 1 year courses: 35 hours
- 2 Units x 2 years courses: 70 hours
- 4 Units x 1 year courses: 70 hours
- Some Specialisation Courses may require additional work placement

Optional HSC examination

Students completing this course are eligible to sit an optional, written HSC examination. The purpose of the examination is to provide a mark which may be used in the calculation of the ATAR. The examination is independent of the competency-based assessment undertaken during the course and has no impact on the eligibility to receive an AQF VET qualification.

Specialisation studies

Students may be offered the opportunity to undertake additional units of competency and credit towards their qualifications via Specialisation Studies. Information will be made available to students where appropriate.

N Determinations

Where a student has not met NSW Education Standards Authority (NESA) course completion criteria, (including meeting work placement requirements), they may receive an 'N' award warning (course not satisfactorily completed). Students issued with an 'N' award warning will be issued with a rectification which must be completed. Students who receive more than 2 N awards may be at risk of not completing NESA requirements and may not be awarded the appropriate units of credit towards their HSC. Any unit of competency achieved will be awarded as part of the VET qualification.

Appeals

Students may lodge appeals against assessment decisions or 'N' determinations through their school.

Qualification changes and updates

Due to the dynamic nature of VET, qualifications may change during the course of study. The RTO will ensure that students are fully informed of these changes and may transition students to the latest qualification during the course. The RTO will ensure that any change will be made with a minimum of disruption.

Foundation Skills

Foundation skills are the underpinning communication skills required for participation in the workplace, the community and in adult education and training. Language, literacy and numeracy, or LLN, is the traditional way of referring to the ability to speak, listen, read and write in English, and to use mathematical concepts.

School-based Apprenticeships and Traineeships (SBATs)

A school-based traineeship is available in this course.

To express an interest or obtain further information go to <http://www.northernnsw.startmytrade.com.au/>

Your school SBAT Coordinator, Careers Advisor, VET Coordinator or VET Teacher is available to discuss apprenticeships and traineeships as part of your HSC.

By enrolling in a VET qualification in NSW Public Schools Tamworth RTO 90162, you are choosing to participate in a program of study that will give you the best possible direction towards a nationally recognised qualification. You will be expected to complete assessments relevant to the qualification and adhere to the requirements of the NSW Education Standards Authority (NESA).